

- TREE LEGEND**
- M = MAPLE
 - AS = ASPEN
 - ASH = ASH
 - OK = OAK
 - CD = CEDAR
 - BS = BASSWOOD
 - MA = MOUNTAIN ASH
- LEGEND**
- CP = CAMPSITE POST
 - LP = LIGHT POLE
 - EE = EXISTING ELEVATION
 - RP = REFERENCE POINT
 - WV = WATER VALVE

R.P. #	COORD'S
2	N 4320.58 E 4954.59

WITNESSES TO R.P.
 R.P. #2 (1/2" BAR)
 SET NAIL AND TAG SOUTHWEST SIDE 10' ASH N10W, 42.51'
 SET NAIL AND TAG NORTH SIDE 10' MAPLE N80E, 68.28'
 SET NAIL AND TAG EAST SIDE 10' ASH S25W, 61.26'

BENCH MARK NO. 2
 P.K. NAIL EAST SIDE OF 34' MAPLE, ELEVATION 605.46

BENCH MARK NO. 3
 NAIL AND TAG NORTHEAST SIDE 10' ASH, ELEVATION 601.76

CONSTRUCT 12" SDR-18 PVC CASING PIPE AT STATION 21+56. INVERT ELEVATION OF CASING PIPE SHALL BE 592.0. CAP ENDS OF CASING PIPE AND MARK LOCATIONS WITH 4X4 WOLMANIZED POSTY EXTENDED 12" ABOVE GRADE. CASING PIPE SHALL EXTEND A MINIMUM OF 10' BEYOND EDGE OF GRAVEL SHOULDER EACH SIDE OF DRIVE.

CONSTRUCT 4' PRECAST CONCRETE STORM MANHOLE WITH MDOT TYPE A COVER AT EXISTING 18" STORM SEWER. CONSTRUCT 10' LFT OF 6" PDS OUTLET NORTH AND SOUTH OF MANHOLE.

REMOVE EXISTING DRINKING FOUNTAIN. CONSTRUCT NEW DRINKING FOUNTAIN. SEE 5 FOR DETAIL.

MATCH EXISTING SURFACE ELEVATION WITH PROPOSED.

CURVE NO. 7
PI = 25+32.87

CONSTRUCT 4" PVC ELECTRICAL CONDUIT TYPICAL OF 1-EACH

EXISTING UNDERGROUND ELECTRIC (2" PVC) TO PUMP STATION SHALL BE PROTECTED.

CENTRAL CAMPGROUND - NORTH LOOP
SEE SHEET 11 FOR PLAN

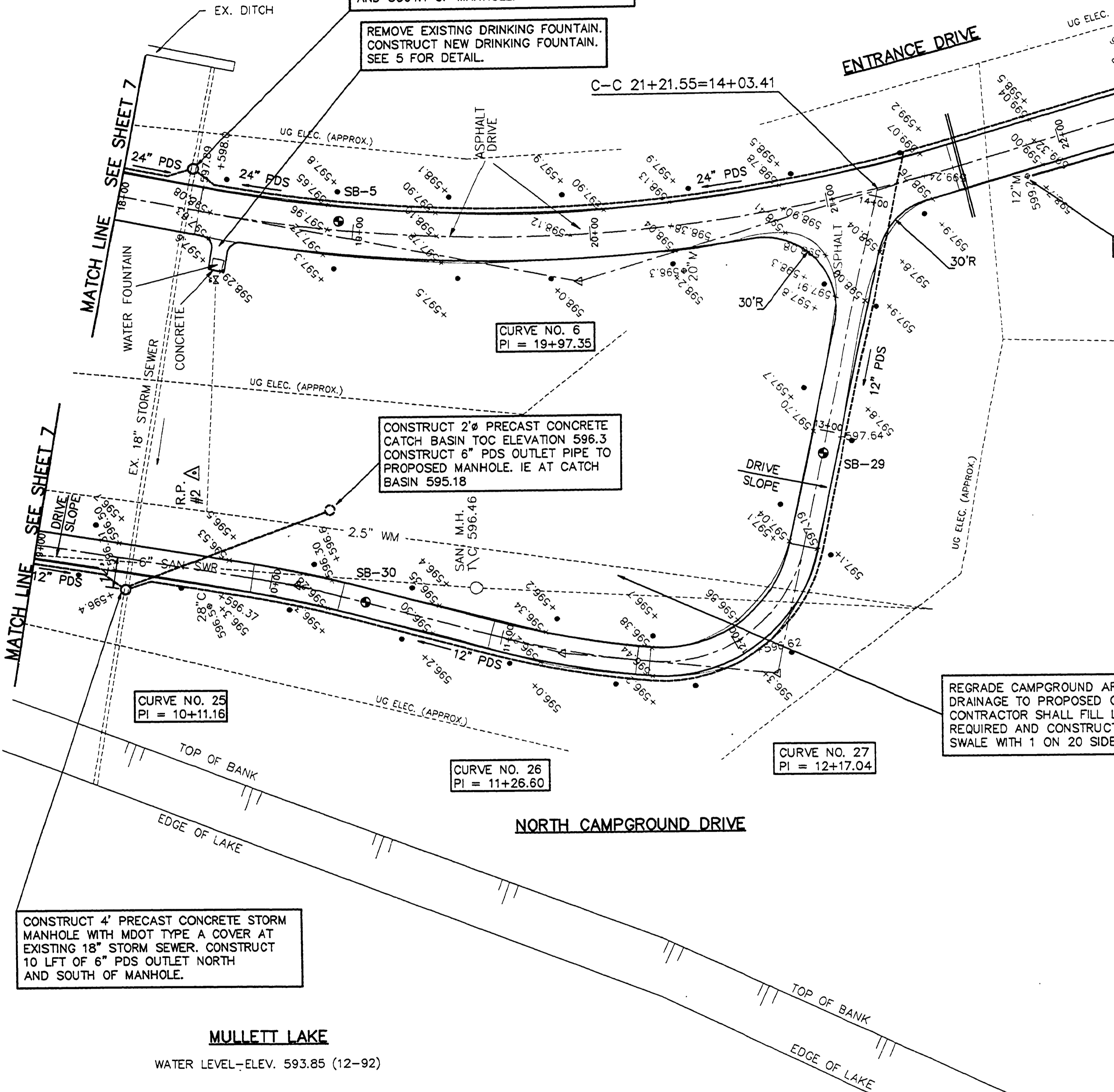
CONSTRUCT 2' PRECAST CONCRETE CATCH BASIN TOC ELEVATION 596.3. CONSTRUCT 6" PDS OUTLET PIPE TO PROPOSED MANHOLE. IE AT CATCH BASIN 595.18

REGRADE CAMPGROUND AREA TO PROVIDE DRAINAGE TO PROPOSED CATCH BASIN. CONTRACTOR SHALL FILL LOW AREAS AS REQUIRED AND CONSTRUCT A DRAINAGE SWALE WITH 1 ON 20 SIDE SLOPES.

SEE SHEET 3 FOR TYPICAL CROSS SECTION FOR ENTRANCE DRIVE AND CAMPGROUND DRIVE.

NORTH CAMPGROUND DRIVE
 END POINT STATION 14+03.42 = STATION 21+21.55
 ENTRANCE DRIVE
 COORDINATES
 N 4032.69
 E 5070.34

CENTER CAMPGROUND - NORTH LOOP DRIVE
 STATION 0+00 = STATION 26+37.90 ENTRANCE DRIVE
 COORDINATES
 N 3529.12
 E 5164.11



CURVE NO. 6	CURVE NO. 7	CURVE NO. 25	CURVE NO. 26	CURVE NO. 27
Δ = 27°23'00"	Δ = 26°20'49"	Δ = 5°29'50"	Δ = 8°55'31"	Δ = 8°55'31"
R = 670.00'	R = 650.00'	R = 400.00'	R = 400.00'	R = 60.00'
T = 163.22'	T = 152.14'	T = 19.20'	T = 31.22'	T = 54.00'
D = 8.551609'	D = 8.514735'	D = 14.323945'	D = 14.323945'	D = 95.492966'
L = 320.21'	L = 298.90'	L = 38.38'	L = 62.31'	L = 87.94'
PC = 18+34.13	PC = 23+80.73	PC = 9+91.96	PC = 10+95.38	PC = 11+63.04
PI = 19+97.35	PI = 25+32.87	PI = 10+11.16	PI = 11+26.60	PI = 12+17.04
PT = 21+54.34	PT = 26+79.63	PT = 10+30.34	PT = 11+57.69	PT = 12+50.98
N 4157.70	N 3637.63	N 4276.98	N 4165.34	N 4075.24
E 5033.03	E 5184.76	E 4907.08	E 4877.60	E 4868.33

DRN BY:	IDENTIFICATION NO.	ISSUED FOR	DATE
DAF	PROJECT - ALOHA	PRELIMINARY	7-06-92
GJF	STATE ACCOUNT	CONSTRUCTION	7-14-93
GDA	607-75-2450-400	FINAL RECORD	

Capital Consultants, Inc.

STATE OF MICHIGAN
DEPARTMENT OF MANAGEMENT AND BUDGET
Office of Facilities

QUALITY OF LIFE RECREATION BOND
MICHIGAN DEPARTMENT OF NATURAL RESOURCES
PARKS DIVISION - STATE ACCT. NO. 607-75-2450-400

ALOHA STATE PARK
ENTRANCE DRIVE STATION 18+00 TO 27+00
NORTH CAMPGROUND DRIVE STATION 9+00 TO 14+03

SCALE: HORIZ. 1"=30'
PROJ. NO.: 91165
SHEET 9 OF 17

FILE NO.: 116503
PLOT DATE: 7-13-93
UPDATED BY: GJF

REFER TO L-118A SHEET 8 OF 10

L-118