

PLACE 100 LFT. B GUARD RAIL WITH BUFFERED TOTAL OF 200 L AND 4-EA. BUFI



ALPHA STATE PARK  
CHEBOYGAN COUNTY, MICHIGAN  
REVISED SLOPE SECTION DETAIL

SEE SHEET 3 FOR TYPICAL CROSS SECTION FOR ENTRANCE DRIVE

REMOVE EXISTING CONCRETE SLAB BANK PROTECTION EACH SIDE OF DRIVE. CONCRETE TO BE REMOVED FROM PARK SITE.

REMOVE EXISTING GUARD RAIL EACH SIDE OF CREEK

REFER TO DETAILS OF SHEET 4 FOR DETAILS OF SLOPE PAVING CONCRETE

Bridge was redone with concrete caps over culvert and then sides were lined with geotextile fabric and 6"-16" stone. No concrete was poured.

WITNESSES TO R.P.  
R.P. #6 (1 1/2" BAR)  
SET NAIL AND TAG NORTH SIDE 14" ASPEN S45°E, 19.79'  
SET NAIL AND TAG WEST SIDE 12" MAPLE N70°E, 43.18'  
SET NAIL AND TAG NORTHEAST SIDE 10" MAPLE N45°W, 98.07'

BENCH MARK NO. 4  
P.K. NAIL SOUTH SIDE 12" ASH, ELEVATION 599.15

BENCH MARK NO. 5  
P.K. NAIL SOUTHWEST SIDE 10" ASH, ELEVATION 599.87

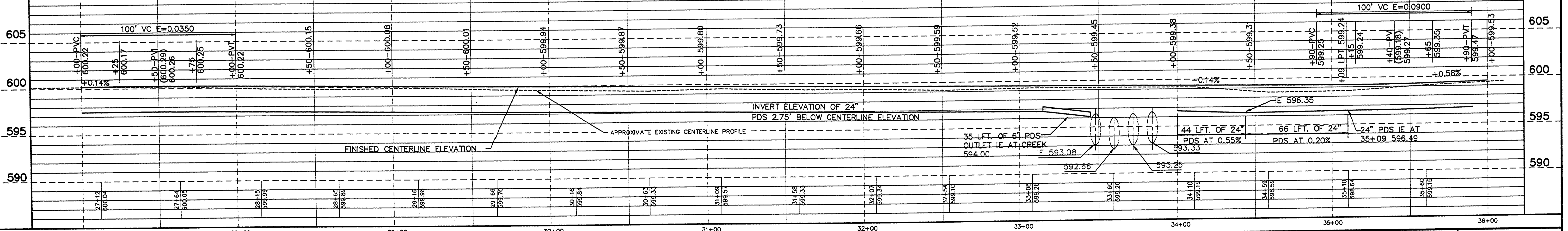
ELEVATIONS ARE DERIVED FROM EXISTING PLANS OF ALPHA STATE PARK

R.P. #	COORD'S
6	N 3037.68 E 5071.52

TREE LEGEND  
M = MAPLE  
AS = ASPEN  
O = OAK  
C = CEDAR  
BA = BASSWOOD  
MA = MOUNTAIN ASH

LEGEND  
\* = CAMPSITE POST  
o = LIGHT POLE  
x = EXISTING ELEVATION  
= REFERENCE POINT  
= WATER VALVE

CURVE NO. 8	CURVE NO. 9	CURVE NO. 10
Δ = 20°50'41"	Δ = 20°50'41"	Δ = 30°32'33"
R = 500.00'	R = 1010.00'	R = 310.00'
T = 91.97'	T = 81.78'	T = 84.64'
D = 11.459156°	D = 5.672851°	D = 18.482510°
L = 181.90'	L = 163.20'	L = 165.25'
PC = 29+99.43	PC = 32+89.68	PC = 35+18.38
PI = 30+91.40	PI = 33+71.46	PI = 36+03.02
PT = 31+81.33	PT = 34+52.88	PT = 36+83.63
N 3082.43 E 5086.04	N 2840.44 E 4941.05	N 2663.26 E 4791.40



DRN BY: DAF	IDENTIFICATION NO. PROJECT - ALPHA	ISSUED FOR: PRELIMINARY	DATE: 7-06-92
CHKD BY: GJF	STATE ACCOUNT	CONSTRUCTION	7-14-93
APPRD BY: GDA	607-75-2450-400	FINAL RECORD	

STATE OF MICHIGAN DEPARTMENT OF MANAGEMENT AND BUDGET Office of Facilities	STATE OF MICHIGAN DEPARTMENT OF NATURAL RESOURCES PARKS DIVISION - STATE ACCT. NO. 607-75-2450-400	ALPHA STATE PARK ENTRANCE DRIVE STATION 27+00 TO 36+00	SCALE: HORIZ. 1"=30' VERT. 1"=5' PROJ. NO.: 91165 SHEET 11 OF 17
--	--	--	---

FILE NO.: 116524  
PLOT DATE: 7-13-93  
UPDATED BY: GJF

L-118