

**CENTRAL CAMPGROUND  
NORTH LOOP DRIVE**  
 START POINTS STATION 0+00 =  
 STATION 26+37.90 ENTRANCE DRIVE  
 COORDINATES N 3529.12  
 E 5164.11  
 END POINT STATION 13+49.88 =  
 STATION 28+78.47 ENTRANCE DRIVE  
 COORDINATES N3292.06  
 E 5123.31

**CURVE NO. 28**  
 $\Delta = 19^{\circ}52'00''$   
 $R = 400.00'$   
 $T = 70.05'$   
 $D = 14.323945'$   
 $L = 138.70'$   
 $PC = 0+60.41$   
 $PI = 1+30.46$   
 $PT = 1+99.11$   
 { N 3566.28  
 { E 5039.05

**CURVE NO. 29**  
 $\Delta = 7^{\circ}41'49''$   
 $R = 800.00'$   
 $T = 53.82'$   
 $D = 7.161972'$   
 $L = 107.47'$   
 $PC = 3+25.55$   
 $PI = 3+79.37$   
 $PT = 4+33.02$   
 { N 3714.87  
 { E 4837.62

**CURVE NO. 30**  
 $\Delta = 95^{\circ}28'04''$   
 $R = 50.00'$   
 $T = 55.01'$   
 $D = 114.591559'$   
 $L = 83.31'$   
 $PC = 4+89.23$   
 $PI = 5+44.24$   
 $PT = 5+72.54$   
 { N 3794.14  
 { E 4692.89

**CURVE NO. 31**  
 $\Delta = 81^{\circ}39'57''$   
 $R = 60.00'$   
 $T = 51.85'$   
 $D = 95.492966'$   
 $L = 85.50'$   
 $PC = 7+16.21$   
 $PI = 7+68.06$   
 $PT = 8+01.71$   
 { N 3563.99  
 { E 4593.99

**CURVE NO. 32**  
 $\Delta = 2^{\circ}06'54''$   
 $R = 1000.00'$   
 $T = 18.46'$   
 $D = 5.729578'$   
 $L = 36.91'$   
 $PC = 9+19.16$   
 $PI = 9+37.62$   
 $PT = 9+56.07$   
 { N 3465.64  
 { E 4753.94

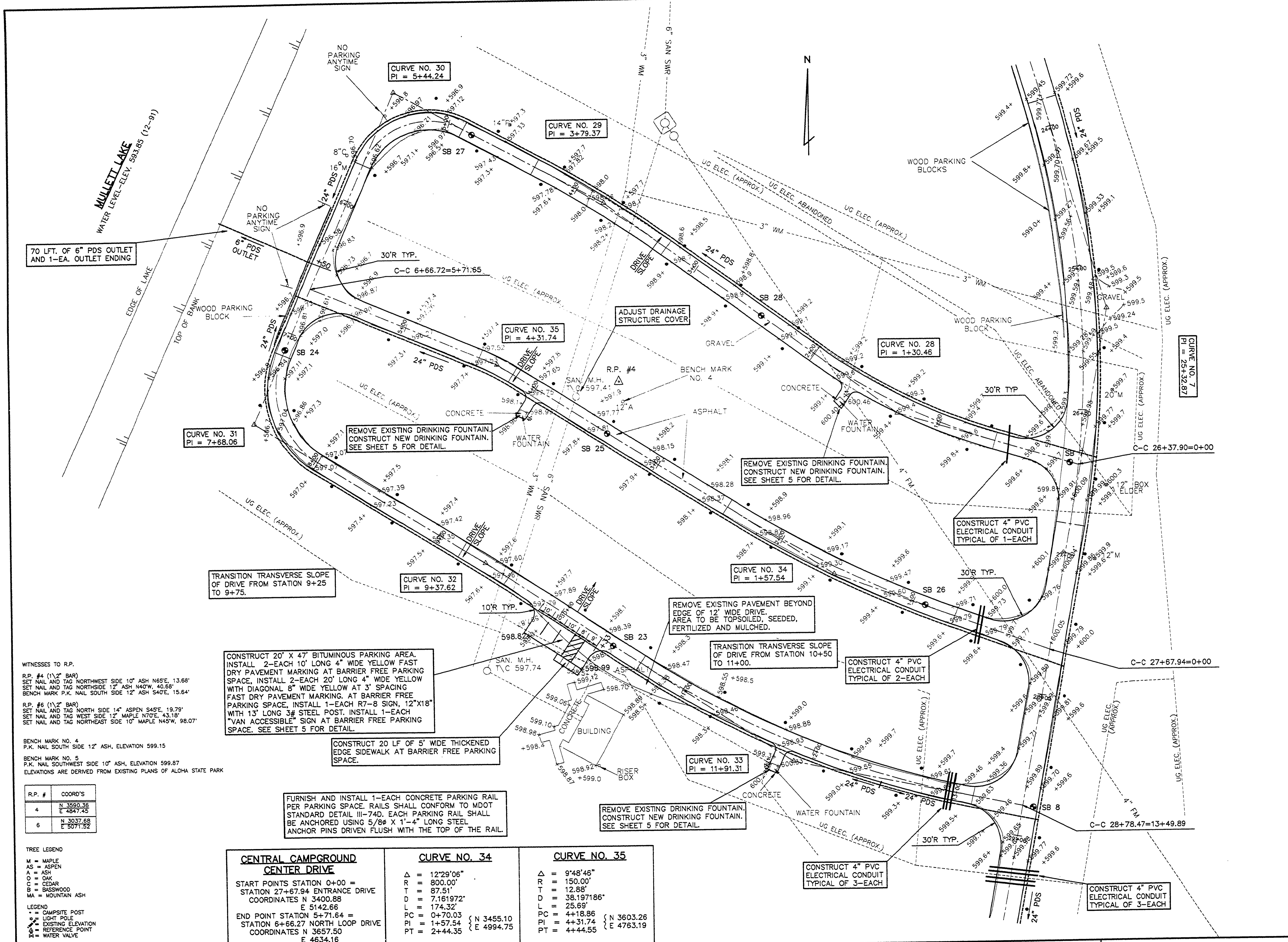
**CURVE NO. 33**  
 $\Delta = 21^{\circ}59'17''$   
 $R = 650.00'$   
 $T = 128.28'$   
 $D = 8.814735'$   
 $L = 249.45'$   
 $PC = 10+65.03$   
 $PI = 11+91.31$   
 $PT = 13+14.48$   
 { N 3324.88  
 { E 4965.00

SEE SHEET 3 FOR TYPICAL CROSS SECTION FOR CAMPGROUND DRIVE.

SEE SHEET 11 FOR ENTRANCE DRIVE PLAN AND PROFILES.

SEE SHEET 13 FOR NORTH LOOP DRIVE PROFILES.

REFER TO L-118A SHEET 9 OF 10



WITNESSES TO R.P.  
 R.P. #4 (1 1/2" BAR)  
 SET NAIL AND TAG NORTHWEST SIDE 10" ASH N65E, 13.68'  
 SET NAIL AND TAG NORTHEAST SIDE 12" ASH N40W, 40.68'  
 BENCH MARK P.K. NAIL SOUTH SIDE 12" ASH S40E, 15.64'  
 R.P. #6 (1 1/2" BAR)  
 SET NAIL AND TAG NORTH SIDE 14" ASPEN S45E, 19.79'  
 SET NAIL AND TAG WEST SIDE 12" MAPLE N70E, 43.18'  
 SET NAIL AND TAG NORTHEAST SIDE 10" MAPLE N45W, 98.07'  
 BENCH MARK NO. 4  
 P.K. NAIL SOUTH SIDE 12" ASH, ELEVATION 599.15  
 BENCH MARK NO. 5  
 P.K. NAIL SOUTHWEST SIDE 10" ASH, ELEVATION 599.87  
 ELEVATIONS ARE DERIVED FROM EXISTING PLANS OF ALOHA STATE PARK

R.P. #	COORD'S
4	N 3590.36 E 4847.45
6	N 3037.68 E 5071.52

**TREE LEGEND**  
 M = MAPLE  
 AS = ASPEN  
 A = ASH  
 O = OAK  
 C = CEDAR  
 B = BASSWOOD  
 MA = MOUNTAIN ASH  
**LEGEND**  
 \* = CAMPSITE POST  
 - = LIGHT POLE  
 X = EXISTING ELEVATION  
 + = REFERENCE POINT  
 W = WATER VALVE

**CENTRAL CAMPGROUND  
CENTER DRIVE**  
 START POINTS STATION 0+00 =  
 STATION 27+67.94 ENTRANCE DRIVE  
 COORDINATES N 3400.88  
 E 5142.66  
 END POINT STATION 5+71.64 =  
 STATION 6+66.27 NORTH LOOP DRIVE  
 COORDINATES N 3657.50  
 E 4634.16

**CURVE NO. 34**  
 $\Delta = 12^{\circ}29'06''$   
 $R = 800.00'$   
 $T = 87.51'$   
 $D = 7.161972'$   
 $L = 174.32'$   
 $PC = 0+70.03$   
 $PI = 1+57.54$   
 $PT = 2+44.35$   
 { N 3455.10  
 { E 4994.75

**CURVE NO. 35**  
 $\Delta = 9^{\circ}48'45''$   
 $R = 150.00'$   
 $T = 12.88'$   
 $D = 38.197186'$   
 $L = 25.69'$   
 $PC = 4+18.86$   
 $PI = 4+31.74$   
 $PT = 4+44.55$   
 { N 3603.26  
 { E 4763.19

DATE	BY	DESCRIPTION
7-06-92	DAF	ISSUED FOR PRELIMINARY PROJECT - ALOHA
7-14-93	GJF	CONSTRUCTION STATE ACCOUNT
	GDA	FINAL RECORD

IDENTIFICATION NO.	ISSUED FOR	DATE
607-75-2450-400	CONSTRUCTION	7-06-92
	FINAL RECORD	7-14-93

**Capital Consultants, Inc.**  
 ENGINEERS  
 600 N. WASHINGTON AVE., LANSING, MICHIGAN 48206 TELEPHONE 971-0710

STATE OF MICHIGAN  
 DEPARTMENT OF MANAGEMENT AND BUDGET  
**Office of Facilities**

QUALITY OF LIFE RECREATION BOND  
 MICHIGAN DEPARTMENT OF NATURAL RESOURCES  
 PARKS DIVISION - STATE ACCT. NO. 607-75-2450-400

ALOHA STATE PARK  
 CENTRAL CAMPGROUND  
 NORTH LOOP DRIVES PLAN  
 SCALE: 1"=30'  
 PROJ. NO.: 91165  
 SHEET 12 OF 17

FILE NO.: 1185C01L  
 PLOT DATE: 7-13-93  
 UPDATED BY: GAF

L-118