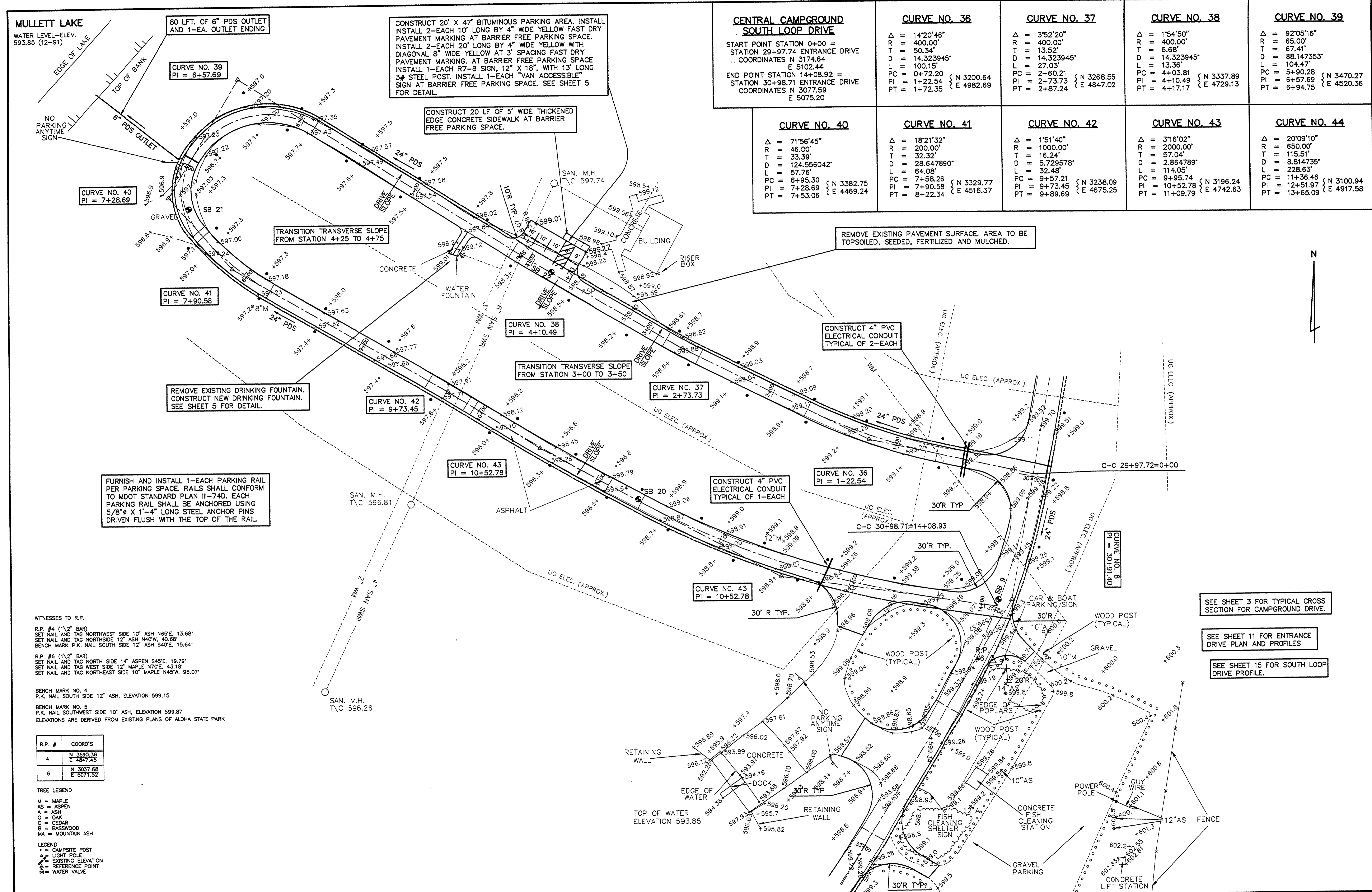


<b>CENTRAL CAMPGROUND SOUTH LOOP DRIVE</b> START POINT STATION 0+00 = STATION 29+97.74 ENTRANCE DRIVE COORDINATES N 3174.64 E 5102.44 END POINT STATION 14+08.92 = STATION 30+98.71 ENTRANCE DRIVE COORDINATES N 3077.59 E 5075.20	<b>CURVE NO. 36</b> $\Delta = 14^{\circ}20'46"$ $R = 400.00'$ $T = 50.34'$ $D = 14.323945'$ $L = 100.15'$ $PC = 0+72.20$ $PI = 1+22.54$ $PT = 1+72.35$	<b>CURVE NO. 37</b> $\Delta = 3^{\circ}52'20"$ $R = 400.00'$ $T = 13.52'$ $D = 14.323945'$ $L = 27.03'$ $PC = 2+60.21$ $PI = 2+73.73$ $PT = 2+87.24$	<b>CURVE NO. 38</b> $\Delta = 1^{\circ}54'50"$ $R = 400.00'$ $T = 6.68'$ $D = 14.323945'$ $L = 13.36'$ $PC = 4+03.81$ $PI = 4+10.49$ $PT = 4+17.17$	<b>CURVE NO. 39</b> $\Delta = 92^{\circ}05'16"$ $R = 65.00'$ $T = 67.41'$ $D = 88.147353'$ $L = 104.47'$ $PC = 5+90.28$ $PI = 6+57.69$ $PT = 6+94.75$
<b>CURVE NO. 40</b> $\Delta = 71^{\circ}56'45"$ $R = 46.00'$ $T = 33.39'$ $D = 124.556042'$ $L = 57.76'$ $PC = 6+95.30$ $PI = 7+28.69$ $PT = 7+53.06$	<b>CURVE NO. 41</b> $\Delta = 18^{\circ}21'32"$ $R = 200.00'$ $T = 32.32'$ $D = 28.647890'$ $L = 64.08'$ $PC = 7+58.26$ $PI = 7+90.58$ $PT = 8+22.34$	<b>CURVE NO. 42</b> $\Delta = 1^{\circ}51'40"$ $R = 1000.00'$ $T = 16.24'$ $D = 5.729578'$ $L = 32.48'$ $PC = 9+57.21$ $PI = 9+73.45$ $PT = 9+89.69$	<b>CURVE NO. 43</b> $\Delta = 3^{\circ}16'02"$ $R = 2000.00'$ $T = 57.04'$ $D = 2.864789'$ $L = 114.05'$ $PC = 9+95.74$ $PI = 10+52.78$ $PT = 11+09.79$	<b>CURVE NO. 44</b> $\Delta = 20^{\circ}09'10"$ $R = 650.00'$ $T = 115.51'$ $D = 8.814735'$ $L = 228.63'$ $PC = 11+36.46$ $PI = 12+51.97$ $PT = 13+65.09$



CONSTRUCT 20' X 47' BITUMINOUS PARKING AREA. INSTALL 2-EACH 10' LONG BY 4" WIDE YELLOW FAST DRY PAVEMENT MARKING AT BARRIER FREE PARKING SPACE. INSTALL 2-EACH 20' LONG BY 4" WIDE YELLOW WITH DIAGONAL 8" WIDE YELLOW AT 3' SPACING FAST DRY PAVEMENT MARKING AT BARRIER FREE PARKING SPACE. INSTALL 1-EACH R7-8 SIGN, 12" X 18", WITH 13' LONG 3/4" STEEL POST. INSTALL 1-EACH "VAN ACCESSIBLE" SIGN AT BARRIER FREE PARKING SPACE. SEE SHEET 5 FOR DETAIL.

CONSTRUCT 20 LF OF 5' WIDE THICKENED EDGE CONCRETE SIDEWALK AT BARRIER FREE PARKING SPACE.

REMOVE EXISTING DRINKING FOUNTAIN. CONSTRUCT NEW DRINKING FOUNTAIN. SEE SHEET 5 FOR DETAIL.

REMOVE EXISTING PAVEMENT SURFACE. AREA TO BE TOPSOILED, SEEDED, FERTILIZED AND MULCHED.

FURNISH AND INSTALL 1-EACH PARKING RAIL PER PARKING SPACE. RAILS SHALL CONFORM TO MDT STANDARD PLAN III-74D. EACH PARKING RAIL SHALL BE ANCHORED USING 5/8" X 1'-4" LONG STEEL ANCHOR PINS DRIVEN FLUSH WITH THE TOP OF THE RAIL.

SEE SHEET 3 FOR TYPICAL CROSS SECTION FOR CAMPGROUND DRIVE.

SEE SHEET 11 FOR ENTRANCE DRIVE PLAN AND PROFILES

SEE SHEET 15 FOR SOUTH LOOP DRIVE PROFILE.

REFER TO L-118A SHEET 10 OF 10

WITNESSES TO R.P.  
 R.P. #4 (1/2" BAR)  
 SET NAIL AND TAG NORTHWEST SIDE 10' ASH N65°E, 13.68'  
 SET NAIL AND TAG NORTHEAST SIDE 12' ASH N40°W, 40.69'  
 BENCH MARK P.K. NAIL SOUTH SIDE 12' ASH S40°E, 15.64'  
 R.P. #6 (1/2" BAR)  
 SET NAIL AND TAG NORTH SIDE 14' ASPEN S45°E, 19.79'  
 SET NAIL AND TAG WEST SIDE 12' MAPLE N70°E, 43.18'  
 SET NAIL AND TAG NORTHEAST SIDE 10' MAPLE N45°W, 98.07'

BENCH MARK NO. 4  
 P.K. NAIL SOUTH SIDE 12' ASH, ELEVATION 599.15

BENCH MARK NO. 5  
 P.K. NAIL SOUTHWEST SIDE 10' ASH, ELEVATION 599.87  
 ELEVATIONS ARE DERIVED FROM EXISTING PLANS OF ALOHA STATE PARK

R.P. #	COORD'S
4	N 3590.36 E 4847.45
6	N 3037.68 E 5071.52

TREE LEGEND  
 M = MAPLE  
 AS = ASPEN  
 A = ASH  
 O = OAK  
 C = CEDAR  
 B = BASSWOOD  
 MA = MOUNTAIN ASH

LEGEND  
 \* = CAMPSITE POST  
 ○ = LIGHT POLE  
 ● = EXISTING ELEVATION  
 △ = REFERENCE POINT  
 □ = WATER VALVE

DRN BY: DAF DESG BY: G.F. OKD BY: G.F. APPD BY: GDA	IDENTIFICATION NO. 607-75-2450-400 PROJECT - ALOHA STATE ACCOUNT	ISSUED FOR: PRELIMINARY DATE: 7-06-92 CONSTRUCTION: 7-14-93 FINAL RECORD:	Capital Consultants, Inc. ENGINEERS	STATE OF MICHIGAN DEPARTMENT OF MANAGEMENT AND BUDGET Office of Facilities	QUALITY OF LIFE RECREATION BOND MICHIGAN DEPARTMENT OF NATURAL RESOURCES PARKS DIVISION - STATE ACCT. NO. 607-75-2450-400	ALOHA STATE PARK CENTRAL CAMPGROUND SOUTH LOOP DRIVES PLAN	SCALE: 1"=30' PROJ. NO.: 91165 SHEET 14 OF 17 L-110
--	---	--	--	--	---	--	--