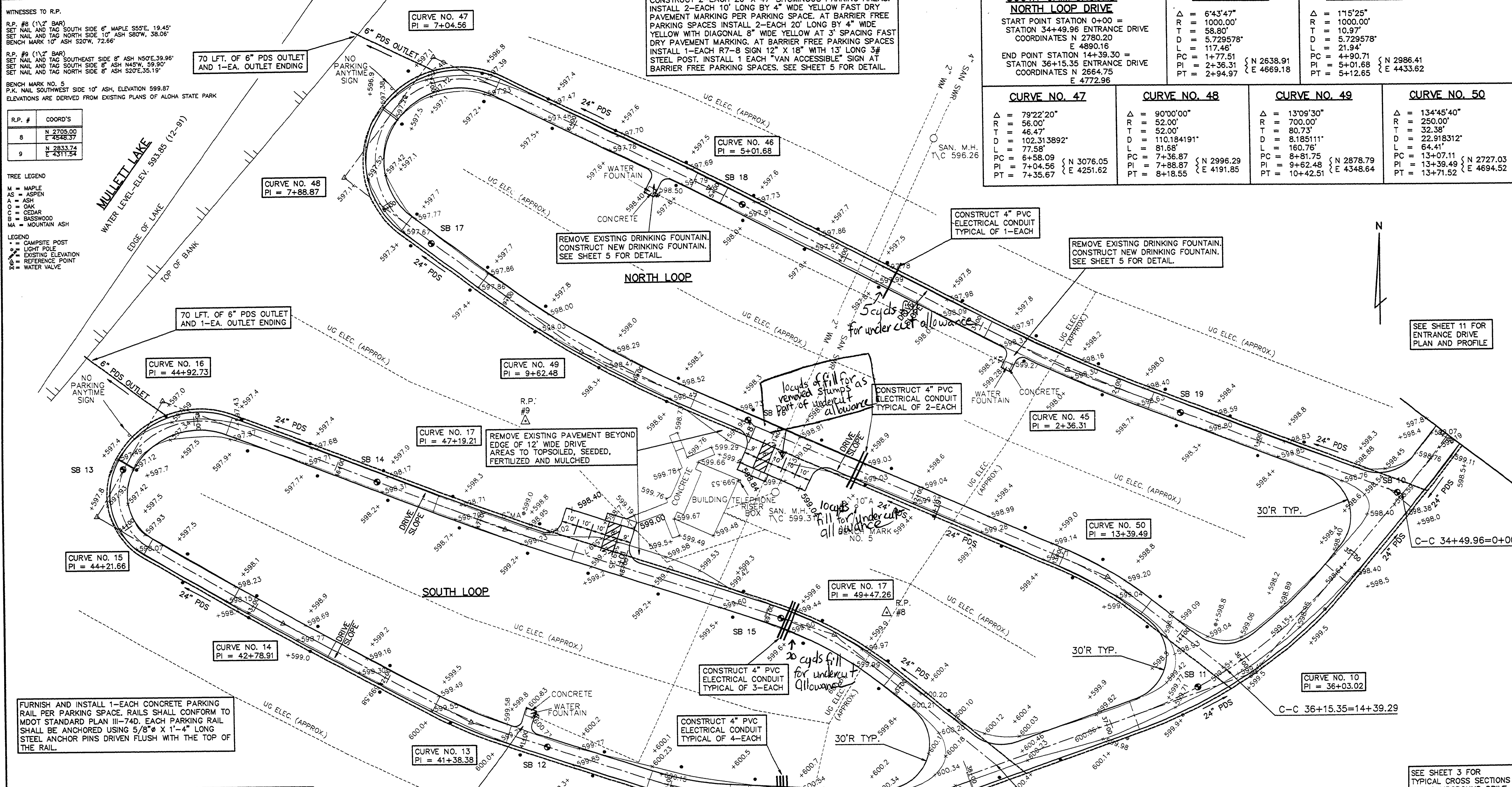


WITNESSES TO R.P.
 R.P. #8 (1 1/2" BAR)
 SET NAIL AND TAG SOUTH SIDE 6" MAPLE S55°E, 19.45'
 SET NAIL AND TAG NORTH SIDE 10" ASH S80°W, 38.06'
 BENCH MARK 10" ASH S20°E, 72.66'
 R.P. #9 (1 1/2" BAR)
 SET NAIL AND TAG SOUTH SIDE 8" ASH N50°E, 39.96'
 SET NAIL AND TAG NORTH SIDE 8" ASH N45°W, 59.90'
 SET NAIL AND TAG NORTH SIDE 8" ASH S20°E, 35.19'
 BENCH MARK NO. 5
 P.K. NAIL SOUTHWEST SIDE 10" ASH, ELEVATION 599.87
 ELEVATIONS ARE DERIVED FROM EXISTING PLANS OF ALOHA STATE PARK

R.P. #	COORD'S
8	N 2705.00 E 4548.37
9	N 2833.74 E 4311.54

TREE LEGEND
 M = MAPLE
 AS = ASPEN
 A = ASH
 O = OAK
 C = CEDAR
 B = BASSWOOD
 MA = MOUNTAIN ASH
 LEGEND
 * = CAMPSITE POST
 ○ = LIGHT POLE
 ● = EXISTING ELEVATION
 △ = REFERENCE POINT
 ⊕ = WATER VALVE



SOUTH CAMPGROUND NORTH LOOP DRIVE		CURVE NO. 45	CURVE NO. 46
START POINT STATION 0+00 =	STATION 34+49.96 ENTRANCE DRIVE	Δ = 6'43'47"	Δ = 1'15'25"
COORDINATES N 2780.20	E 4890.16	R = 1000.00'	R = 1000.00'
END POINT STATION 14+39.30 =	STATION 36+15.35 ENTRANCE DRIVE	T = 58.80'	T = 10.97'
COORDINATES N 2664.75	E 4772.96	D = 5.729578'	D = 5.729578'
		L = 117.46'	L = 21.94'
		PC = 14+77.51	PC = 4+90.71
		PI = 2+36.31	PI = 5+01.68
		PT = 2+94.97	PT = 5+12.65

CURVE NO. 47	CURVE NO. 48	CURVE NO. 49	CURVE NO. 50
Δ = 79'22'20"	Δ = 90'00'00"	Δ = 13'09'30"	Δ = 134'45'40"
R = 56.00'	R = 52.00'	R = 700.00'	R = 250.00'
T = 46.47'	T = 52.00'	T = 80.73'	T = 32.38'
D = 102.313892'	D = 110.184191'	D = 8.185111'	D = 22.918312'
L = 77.53'	L = 81.68'	L = 160.76'	L = 64.41'
PC = 6+58.09	PC = 7+36.87	PC = 8+81.75	PC = 13+07.11
PI = 7+04.56	PI = 7+88.87	PI = 9+62.48	PI = 13+39.49
PT = 7+35.67	PT = 8+18.55	PT = 10+42.51	PT = 13+71.52

ENTRANCE DRIVE
 END ENTRANCE DRIVE STATION 36+00
 COORDINATES
 N 2586.92
 E 4601.66
 CENTERLINE SHIFTS 4.00'
 COORDINATES
 N 2593.14
 E 4602.98

SOUTH CAMPGROUND SOUTH LOOP DRIVE
 END POINT STATION 50+83.97 = STATION 37+81.32 ENTRANCE DRIVE
 COORDINATES
 N 2603.42
 E 4513.73

CURVE NO. 11

Δ = 22'06'56"
R = 200.00'
T = 39.09'
D = 28.647890'
L = 77.20'
PC = 38+00.68
PI = 38+39.77
PT = 38+77.88

CURVE NO. 12

Δ = 15'25'47"
R = 200.00'
T = 27.09'
D = 28.647890'
L = 53.86'
PC = 39+60.42
PI = 39+87.51
PT = 40+14.28

CURVE NO. 13

Δ = 9'53'33"
R = 300.00'
T = 25.96'
D = 19.098593'
L = 51.79'
PC = 41+12.42
PI = 41+38.38
PT = 41+64.21

CURVE NO. 14

Δ = 2'05'40"
R = 2000.00'
T = 36.56'
D = 2.864789'
L = 73.11'
PC = 42+42.35
PI = 42+78.91
PT = 43+15.46

CURVE NO. 15

Δ = 90'00'00"
R = 40.00'
T = 40.00'
D = 143.239449'
L = 62.83'
PC = 43+81.66
PI = 44+21.66
PT = 44+44.49

CURVE NO. 16

Δ = 80'45'57"
R = 56.00'
T = 47.83'
D = 102.313892'
L = 62.83'
PC = 44+45.10
PI = 44+92.73
PT = 45+24.04

CURVE NO. 17

Δ = 2'46'36"
R = 2000.00'
T = 48.47'
D = 2.864789'
L = 96.92'
PC = 46+70.74
PI = 47+19.21
PT = 47+67.66

CURVE NO. 18

Δ = 21'07'28"
R = 250.00'
T = 46.62'
D = 22.918312'
L = 92.17'
PC = 49+00.64
PI = 49+47.26
PT = 49+92.81

DRN BY: DAF	IDENTIFICATION NO. PROJECT - ALOHA	ISSUED FOR: PRELIMINARY	DATE: 7-06-92
CHKD BY: GJF	STATE ACCOUNT	CONSTRUCTION	7-14-93
APP'D BY: GDA	607-75-2450-400	FINAL RECORD	

PROJECT - ALOHA	ISSUED FOR: PRELIMINARY	DATE: 7-06-92
STATE ACCOUNT	CONSTRUCTION	7-14-93
607-75-2450-400	FINAL RECORD	

Capital Consultants, Inc.
 ENGINEERS

STATE OF MICHIGAN
 DEPARTMENT OF MANAGEMENT AND BUDGET
 Office of Facilities

QUALITY OF LIFE RECREATION BOND
 MICHIGAN DEPARTMENT OF NATURAL RESOURCES
 PARKS DIVISION - STATE ACCT. NO. 607-75-2450-400

ALOHA STATE PARK
 SOUTH CAMPGROUND
 CAMPGROUND DRIVE PLAN

SCALE: 1"=30'
 PROJ. NO.: 91155
 SHEET 16 OF 17

L-118