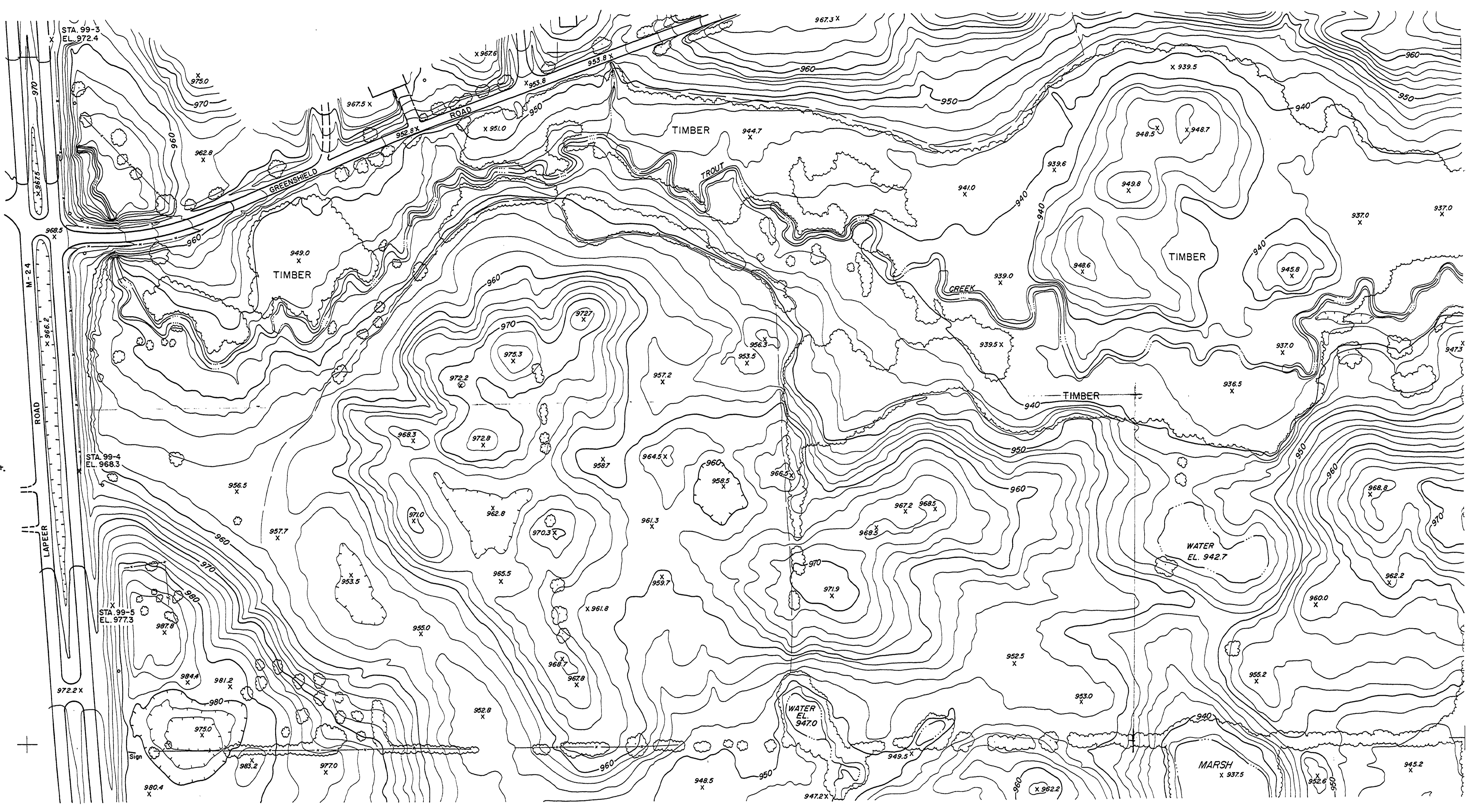


|           |                      |             |                           |      |     |      |    |
|-----------|----------------------|-------------|---------------------------|------|-----|------|----|
| DRAWN BY  | REVIEWED BY SECTIONS |             | APPROVED BY               |      | NO. | DATE | BY |
|           | ARCHITECTURAL        | ENGINEERING | LANDSCAPE                 | DATE |     |      |    |
| TRACED BY | CHECKED BY           |             | ASSISTANT CHIEF IN CHARGE |      | 4   | 5    | 6  |
| DATE      | JUNE 1968            |             | OF DESIGN                 |      |     |      |    |

STA. 99-3  
Center of shoulder on  
# of turnout to east.

STA. 99-4  
Between east edge of  
pavement & last guard post.

STA. 99-5  
2' south of pole in  
fence line.



M.S.H.D. BM\*121. Elev. 979.54  
Tag in root of 12" Butternut  
174' Rt. (East) of Sta. 338+31  
On M-24 approx. 975'  
south of Greenshield road.

M.S.H.D. BM\*122. Elev. 954.06  
Tag in root of 12" Larch  
126' Rt. (East) of Sta. 350+42  
On M-24 approx. 250'  
north of Greenshield road.

|  |    |    |
|--|----|----|
|  | 1C | 2C |
|  | 1B | 2B |
|  | 1A | 2A |

