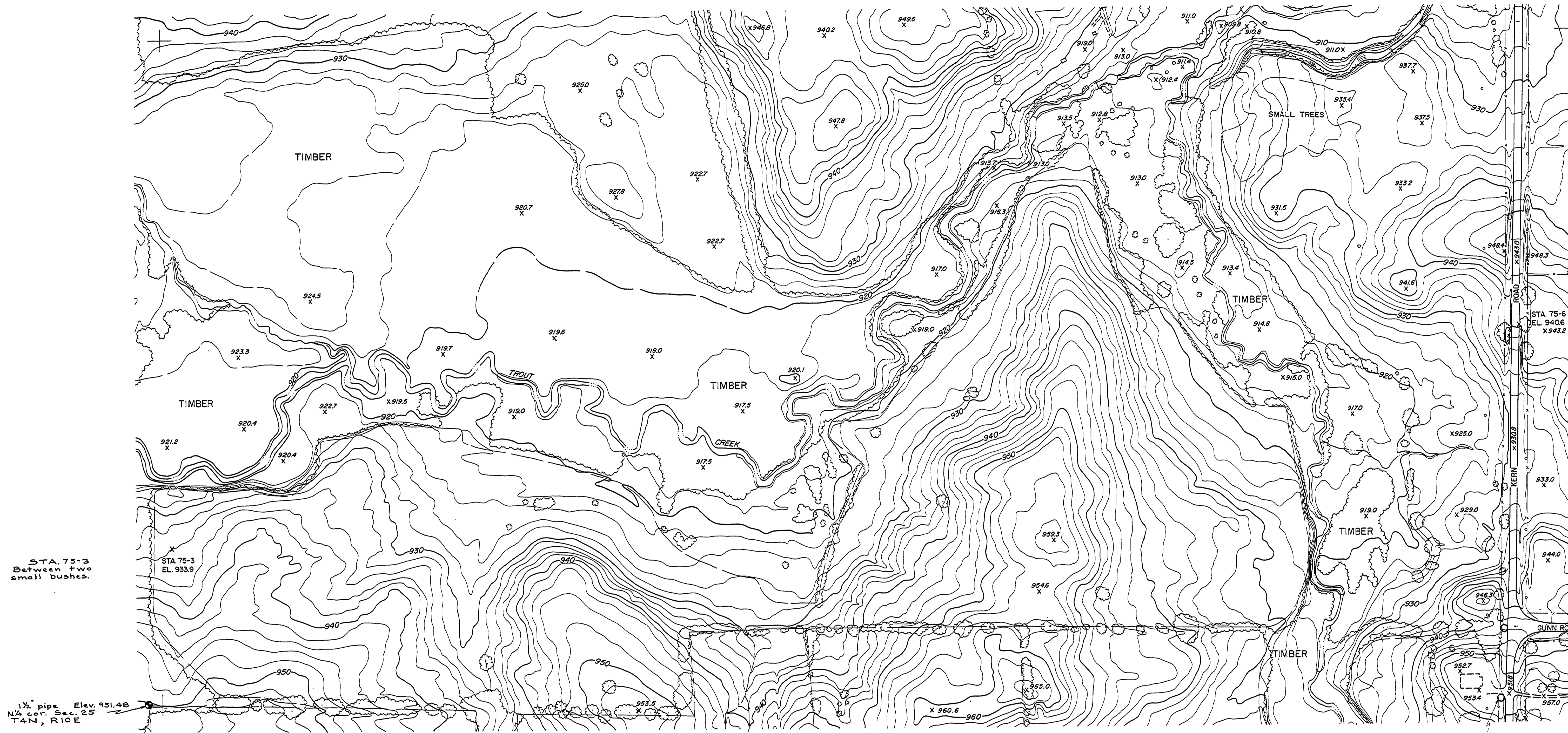


DRAWN BY	TRACED BY	CHECKED BY	DATE	REVIEWED BY SECTIONS			APPROVED BY			NO. DATE BY			REVISIONS			DATE BY		
				ARCHITECTURAL	ENGINEERING	LANDSCAPE	DATE	ASSISTANT CHIEF IN CHARGE	OF DESIGN	DATE	1	2	3	4	5	6		
			June 1958															



STA. 75-3  
Between two  
small bushes.

1/2" pipe Elev. 951.49  
NW. cor. sec. 25  
T4N, R10E

STA. 75-6  
East edge of road  
opposite middle tree.

1/2" pipe Elev. 943.05  
NW. cor. sec. 30  
T4N, R11E  
On 4 of Gunn rd.  
14 west of 4  
of Kern rd.

1/2" pipe  
N.E. cor. sec. 25  
T4N, R10E

2C	3C	
2B	3B	
2A	3A	

