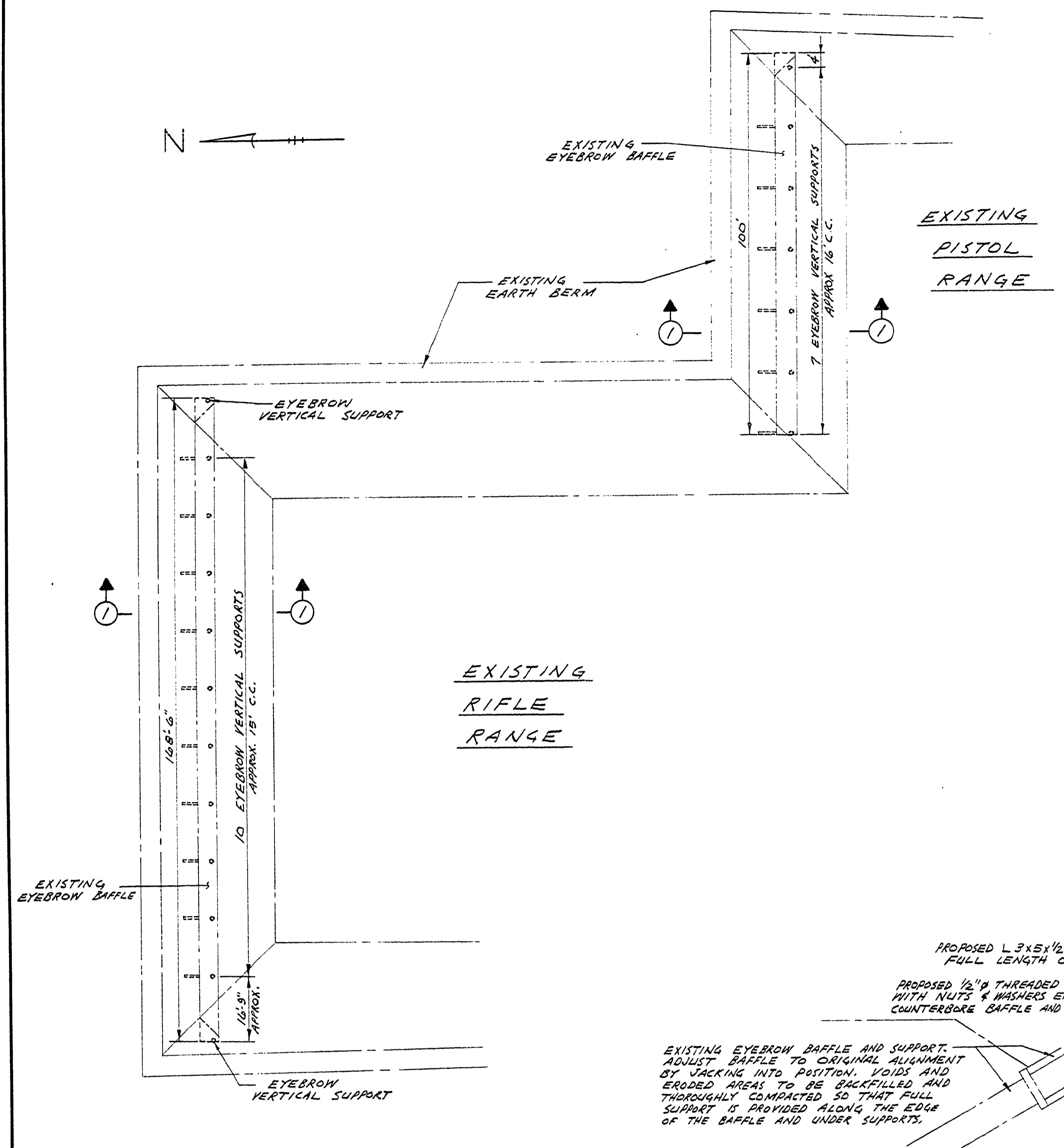
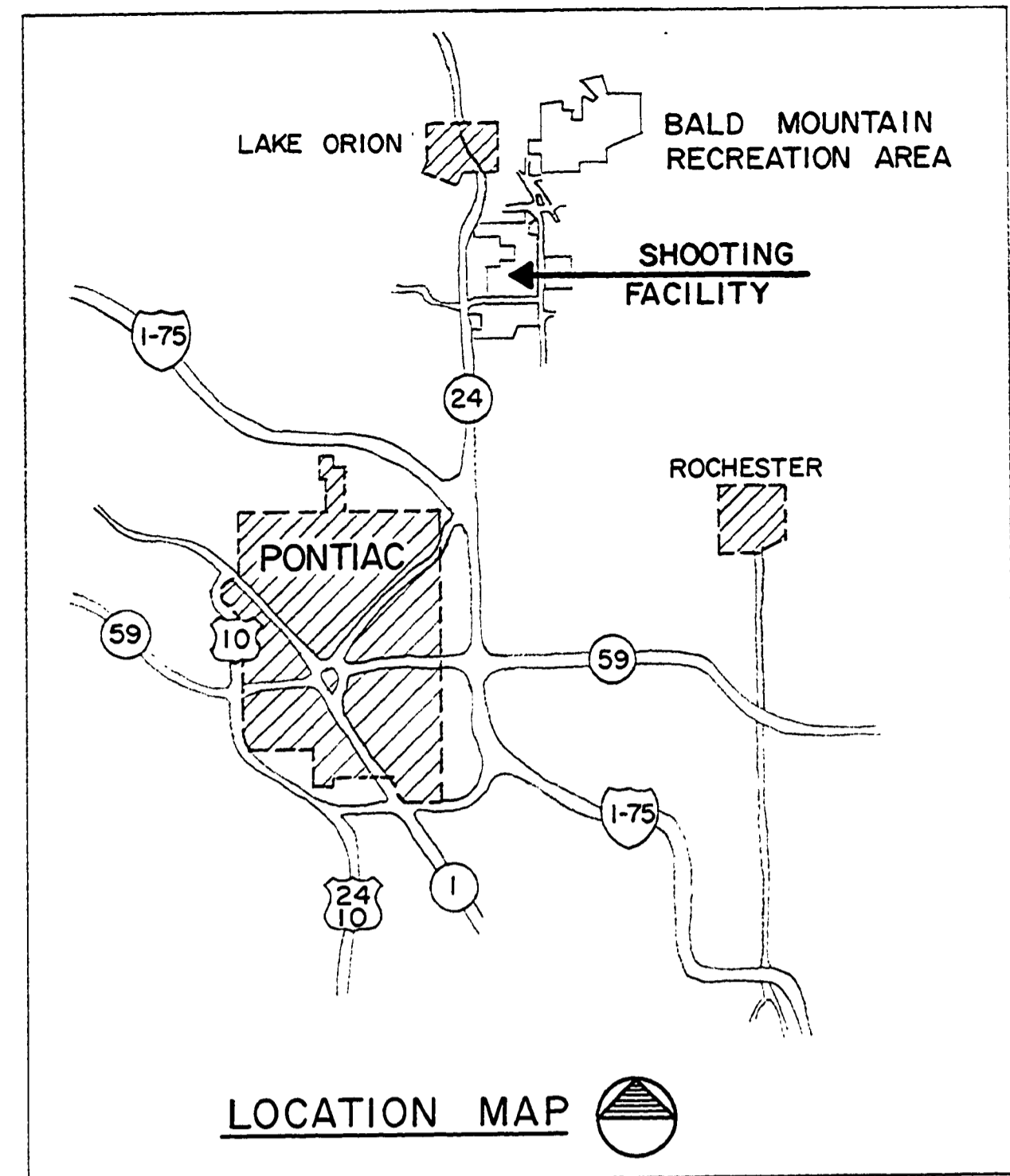
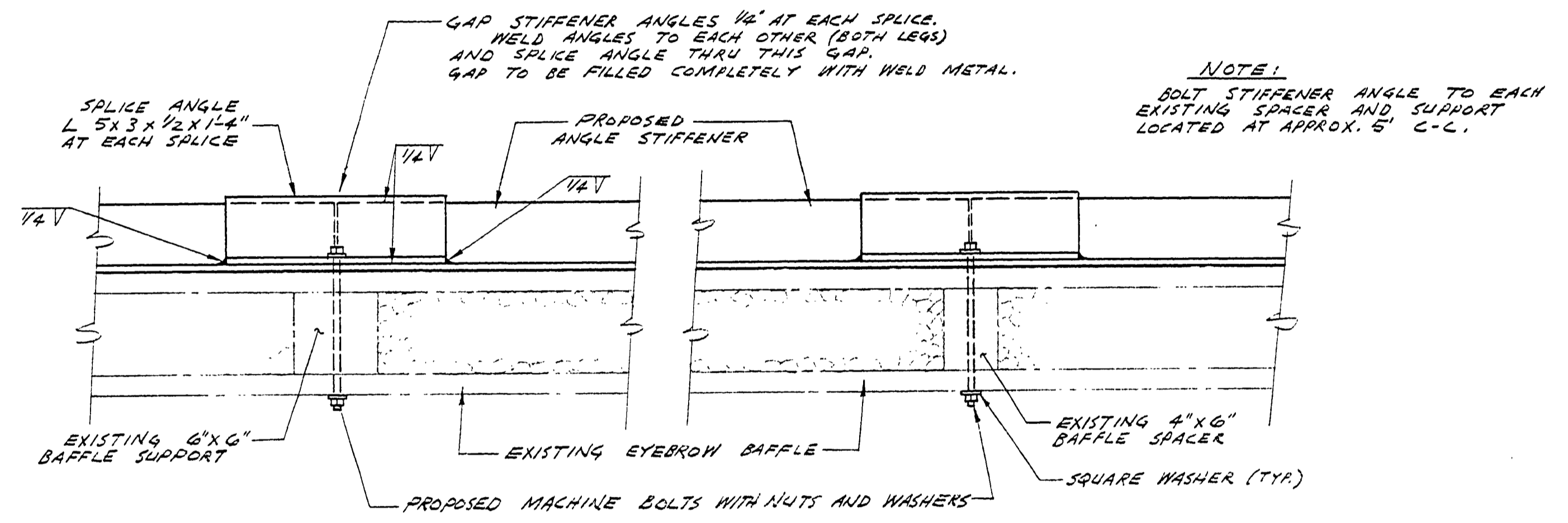


# BALD MOUNTAIN RECREATION AREA CONSTRUCTION PLANS FOR SHOOTING RANGE ADDITIONS

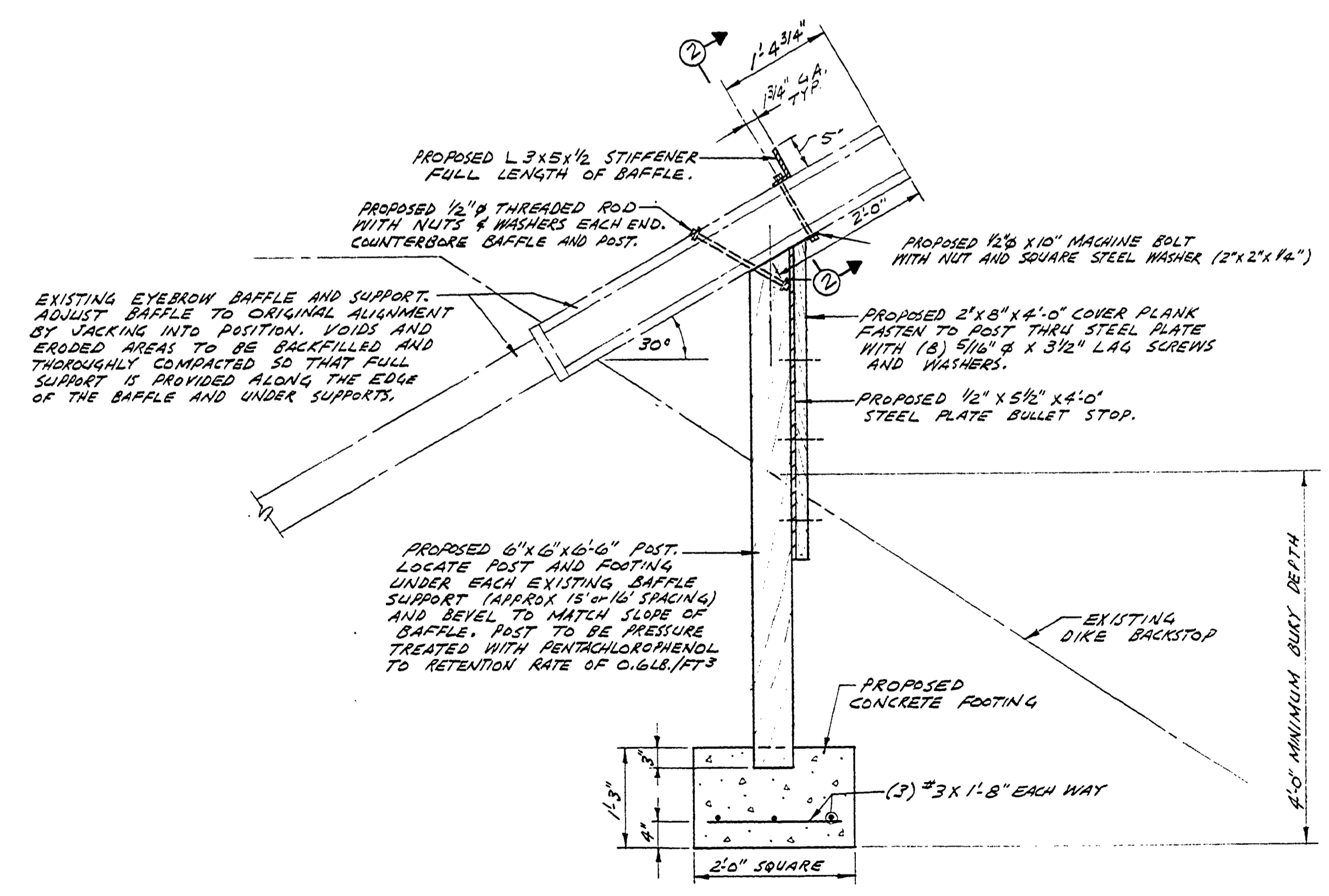
PROJECT NO. 24-1864



PLAN OF SHOOTING FACILITY  
SCALE: 1" = 20'-0"



SECTION 2-2  
TYPICAL ANGLE STIFFENER CONNECTION  
SCALE: 1/2" = 1'-0"



SECTION 1-1  
EYEBROW VERTICAL SUPPORT DETAIL  
SCALE: 3/4" = 1'-0"

- NOTES:
1. ALL HARDWARE AND FASTENERS TO BE GALVANIZED OR ZINC CHROMATE PLATED.
  2. STRUCTURAL ANGLES TO BE PAINTED IN ACCORDANCE WITH CURRENT M.D.S.H.T. SPECIFICATIONS.

BUILDING COMMITTEE APPROVAL	
BY: _____	DATE: _____
RECOMMENDED FOR APPROVAL: <i>[Signature]</i>	8-22-77
ENGINEERING OR ARCHITECTURAL SUPERVISOR	DATE
RECOMMENDED FOR APPROVAL: _____	DATE: _____
PROGRAM AND PLAN COORDINATOR	DATE
DIVISION/REGION APPROVAL	
BY: <i>[Signature]</i>	8/26/77
DIVISION CHIEF/REGIONAL MANAGER	DATE
ENGINEERING DIVISION	
APPROVED: <i>[Signature]</i>	8-30-77
CHIEF ENGINEER	DATE

SURVEYED BY	DRAWN BY B.W.B.	8-77	NO.	DATE	BY	REVISIONS	NO.	DATE	BY	REVISIONS	MICHIGAN DEPARTMENT OF NATURAL RESOURCES	BALD MOUNTAIN RECREATION AREA AREA OR PARK	PROJECT NO. 24-1864
DESIGNED BY R.C.H.	8-77	CHECKED BY	1.				3.				EYEBROW BAFFLE SUPPORT FOR RIFLE AND PISTOL RANGES SHEET TITLE	SHOOTING RANGE ADDITIONS	SHEET 1 OF 1
			2.				4.						PLAN NO. E-115

BRUNING 40-105-32930