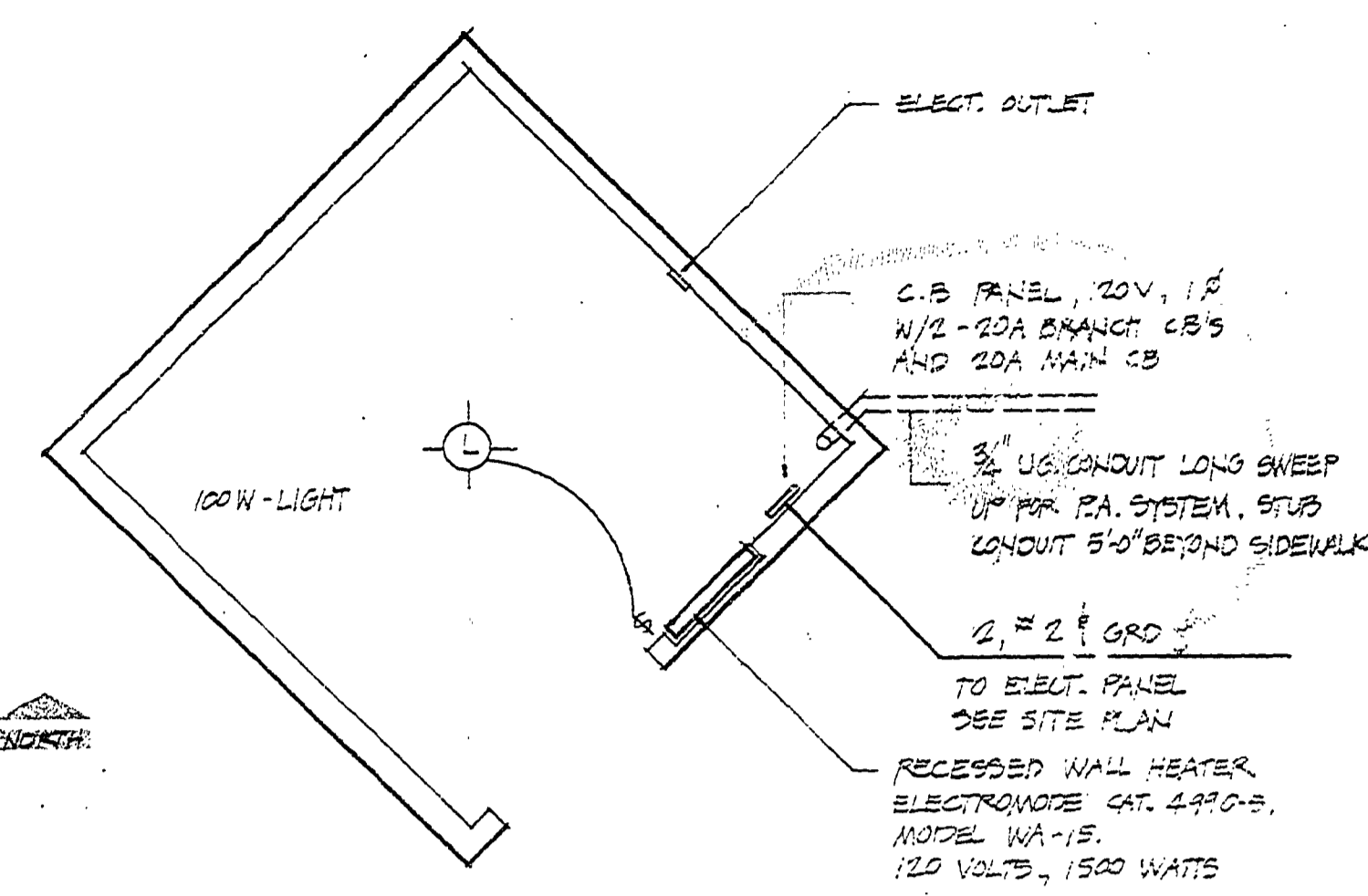


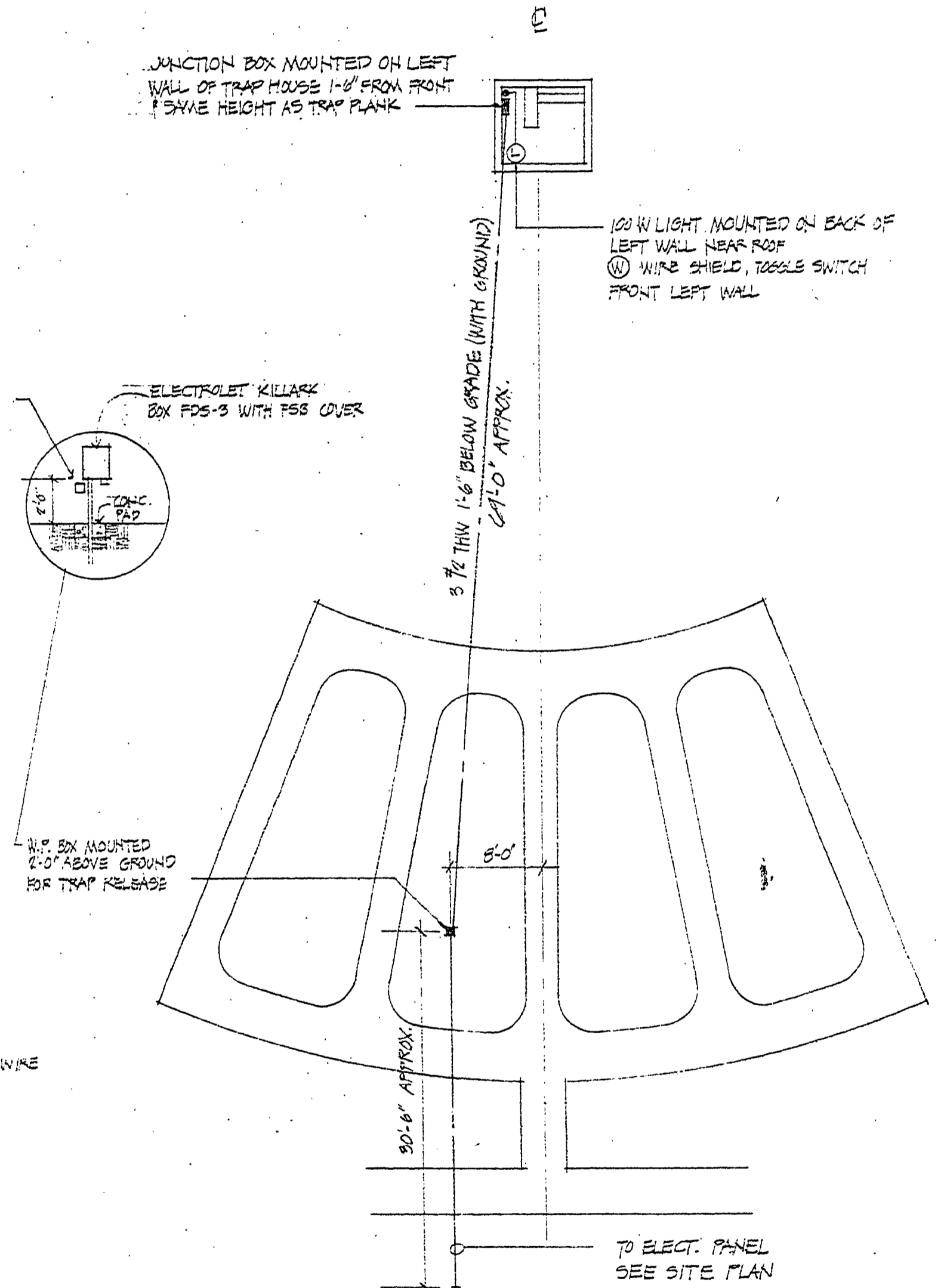
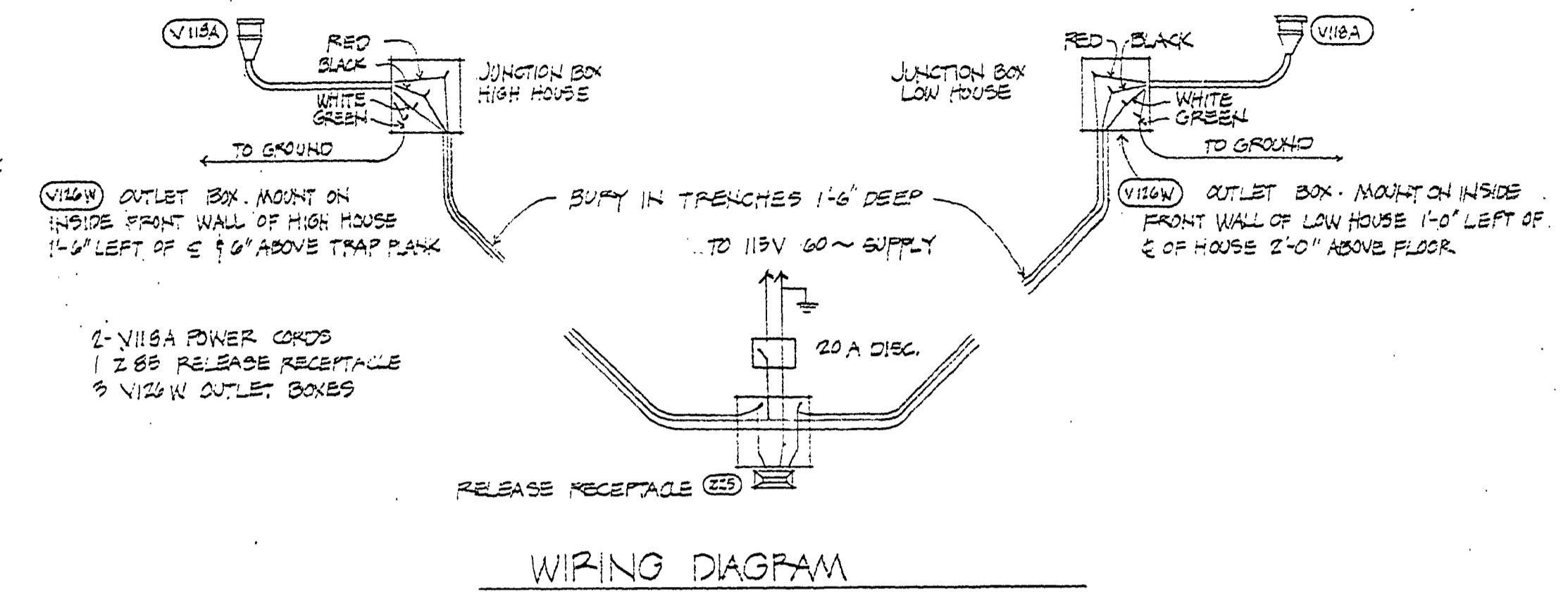
CONTRACTOR MOUNT ELECT. PANEL ON 6"X6" FT. WOODEN POST, 3' ABOVE GRADE, 9"X6" BELOW GRADE. PROTECT 3/4" DIA. BY 10 FT. COPPERWELD GRD. ROD. RUN CRTS. IN CONDUIT TO 12" BELOW GRADE.

ALL WIRING TO BE TYPE UF OR USE, STRANDED COPPER WITH THIN INSULATION.

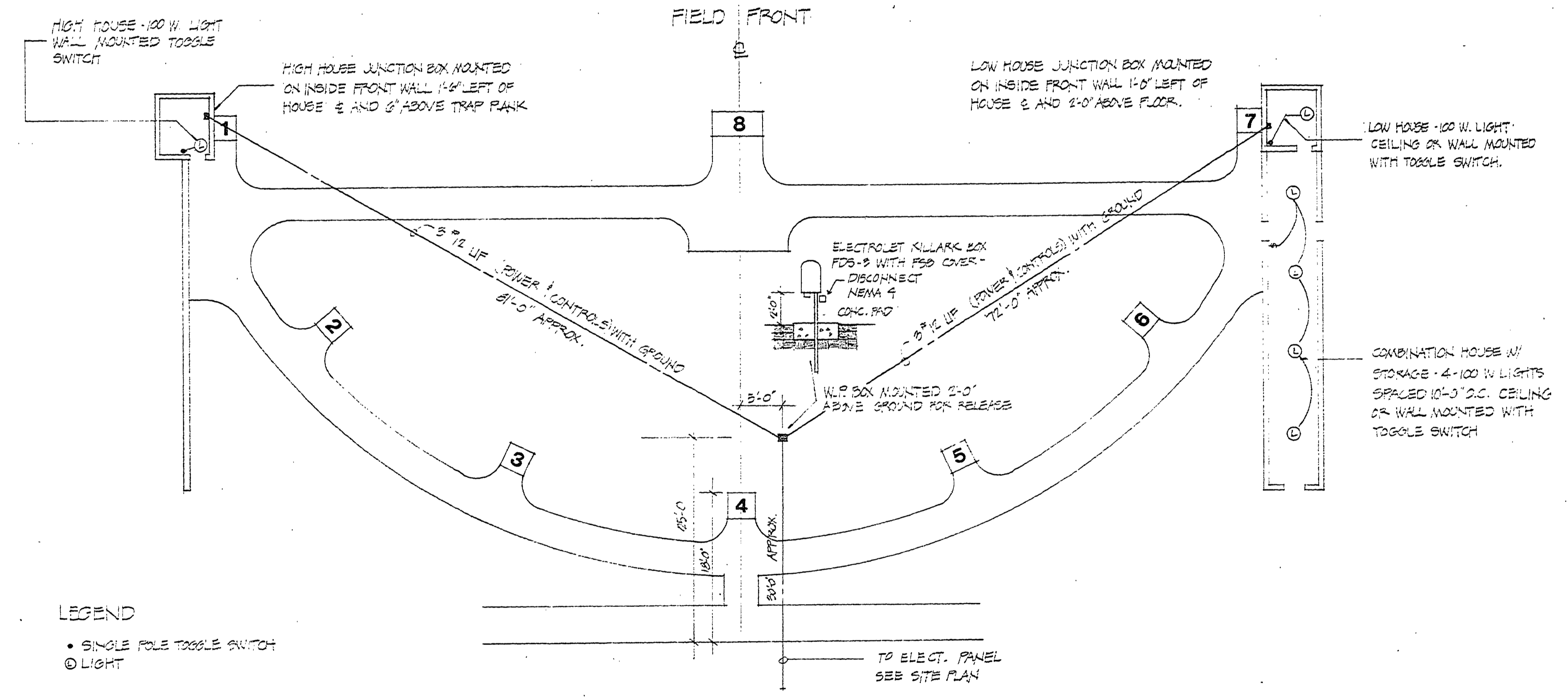
ALL UNDERGROUND CIRCUITS TO BE MIN. 30" BELOW GRADE.



RANGE HOUSE ELECTRICAL LAYOUT
NO SCALE



TRAP FIELD ELECTRICAL LAYOUT
SCALE 1"=1'-0"



LEGEND

- SINGLE POLE TOGGLE SWITCH
- LIGHT

NOTE
EACH FIELD MUST BE WIRED IN THIS MANNER INDEPENDENT OF ANY OTHER FIELD.

SKREET FIELD ELECTRICAL LAYOUT
SCALE 1"=10'-0"

SURVEYED BY	DRAWN BY	NO.	DATE	BY	REVISIONS	NO.	DATE	BY	REVISIONS	MICHIGAN DEPARTMENT OF NATURAL RESOURCES	ELECTRICAL SKREET - TRAP FIELD - RANGE HOUSE	Bald Mountain Recreation Area AREA OR PARK Shooting Facility PROJECT	PROJECT NO. 22-4073
DESIGNED BY	CHECKED BY	1.				3.					SHEET 18 OF 19	PLAN NO. E-111	
DATE	DATE	2.				4.							