

NOTES:

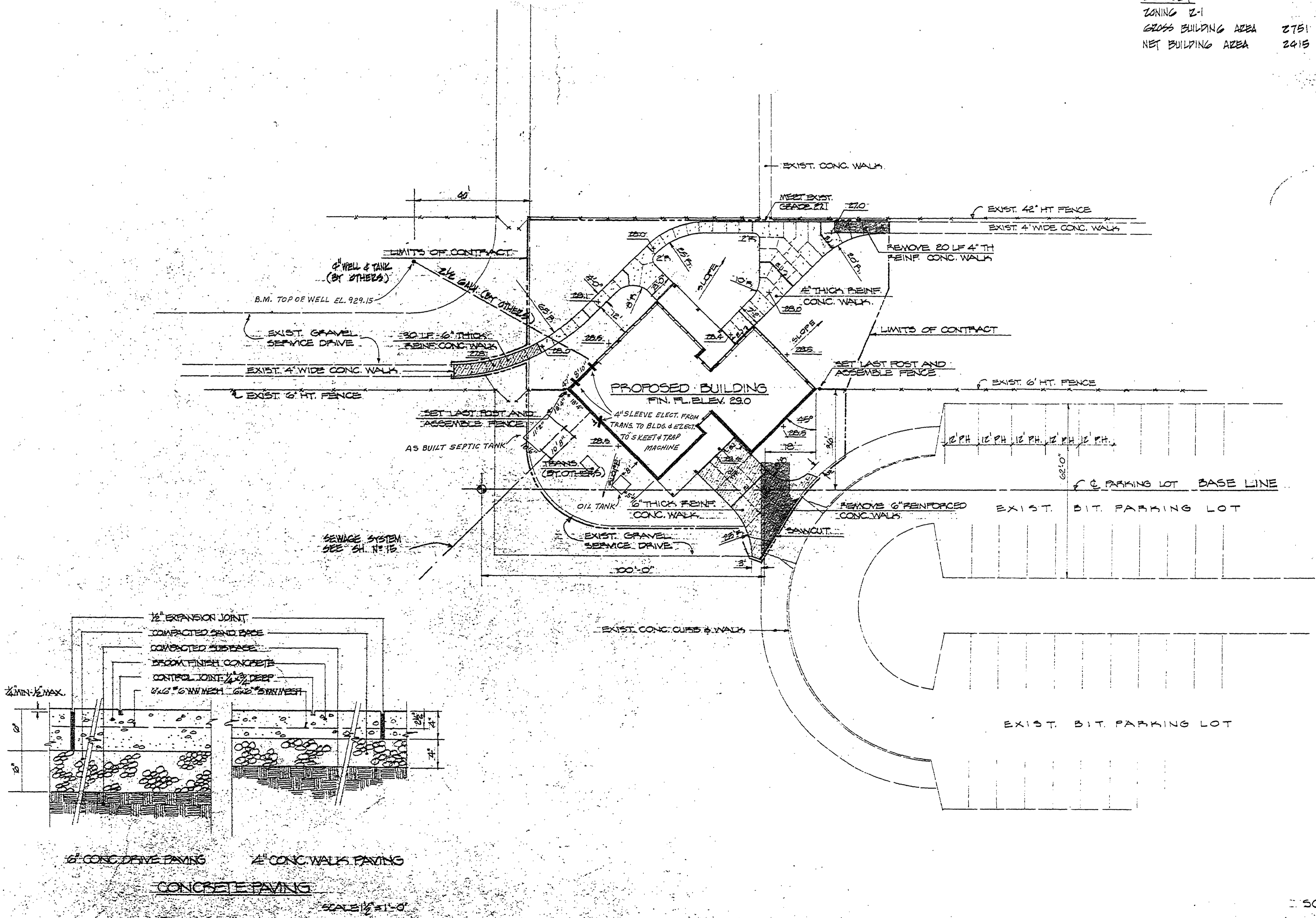
1. ROUGH GRADING WITHIN THE LIMITS OF THIS CONTRACT HAS BEEN COMPLETED. FINISH GRADING AND SPREAD 4" TOP SOIL ONLY, ARE REQUIRED THIS CONTRACT.
2. ALL AREAS WITHIN THE CONTRACT LIMITS ARE TO BE SEDED WITH THE FOLLOWING MIXTURE: 80% KENTUCKY 31, 40% CRIPPING RED FESCUE, 10% PERENNIAL RYEGRASS.
3. QUALITY OF MATERIAL AND METHODS OF CONSTRUCTION FOR ALL SITE ELEMENTS SHALL CONFORM TO MDS&T STANDARD SPECIFICATIONS.

LEGEND:

- [Pattern] CONC. WALK - TO BE REMOVED
- [Pattern] PROP. 4" THICK CONC. WALK
- [Pattern] PROP. 6" THICK CONC. WALK
- [Symbol] PROP. CONTROL JOINT
- [Symbol] PROP. EXPANSION JOINT
- [Symbol] CONTRACT LIMIT LINE
- [Symbol] EXIST. ELEMENTS
- [Symbol] PROP. SPOT ELEV.

SUMMARY:

ZONING Z-1
 GROSS BUILDING AREA 2751 SQ. FT.
 NET BUILDING AREA 2415 SQ. FT.



SURVEYED BY		DRAWN BY EJP		32776	NO.	DATE	BY	REVISIONS	NO.	DATE	BY	REVISIONS	MICHIGAN DEPARTMENT OF NATURAL RESOURCES		BALD MOUNTAIN RECREATION AREA AREA OR PARK		PROJECT NO. 22-4100
DESIGNED BY		CHECKED BY											DEPARTMENT OF NATURAL RESOURCES		SHOOTING RANGE FACILITY		SHEET 1 OF 16
DATE		DATE		2-9-80			D.B.	AS BUILT					DEPARTMENT OF NATURAL RESOURCES		PROJECT		PLAN NO. EH4AB

AS BUILT

SITE PLAN SHEET TITLE

BALD MOUNTAIN RECREATION AREA AREA OR PARK SHOOTING RANGE FACILITY PROJECT

PROJECT NO. 22-4100 SHEET 1 OF 16 PLAN NO. EH4AB