

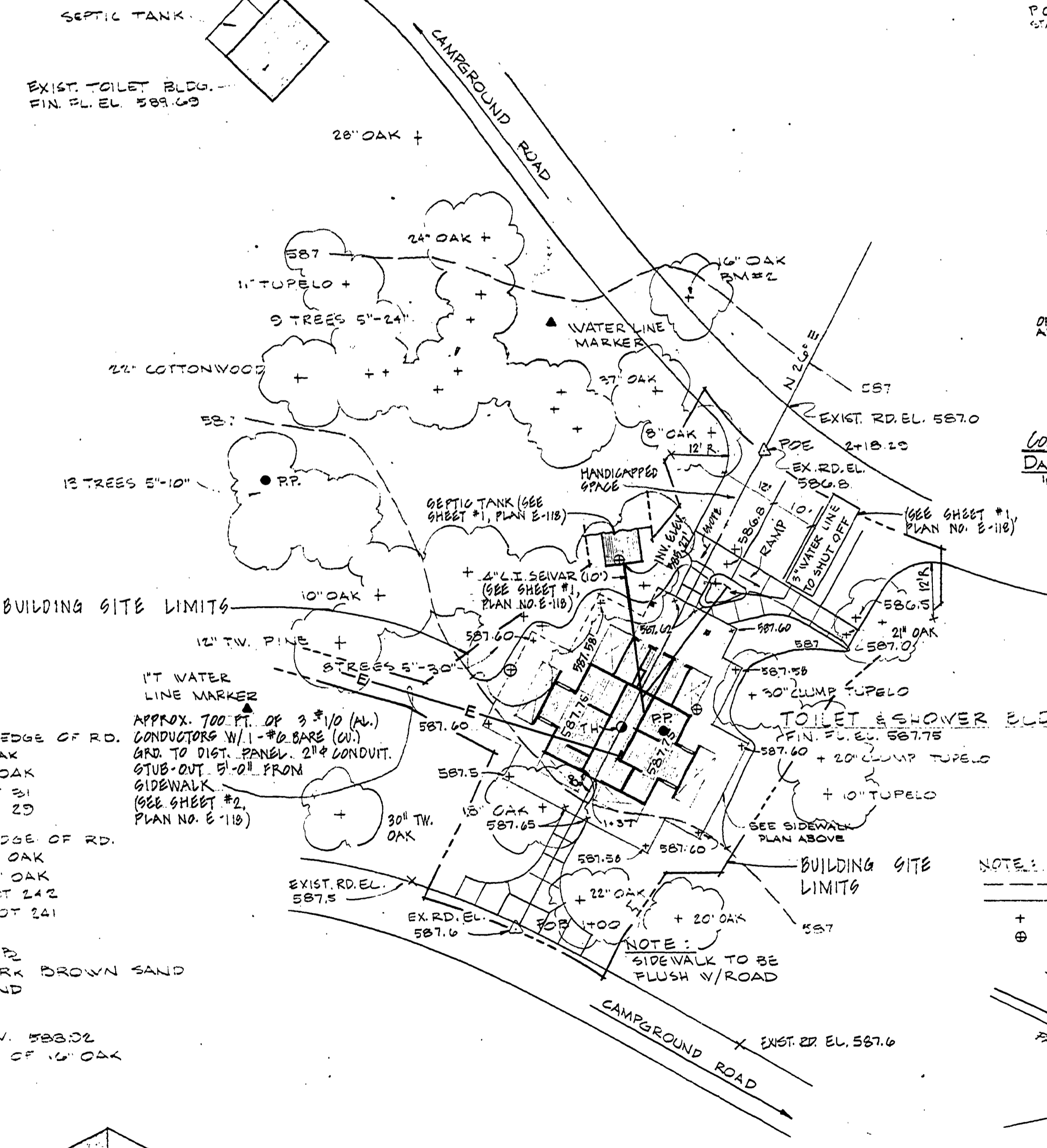
WITNESSES

POB STA. 1+00 1/2" PIPE
N 15° W 4.5' 8" ASH
S 30° W 5.0' 12" ASH
S 55° E 4.17' 11" ASH

POB STA. 2+30.00 1/2" PIPE
N 12° W 5.52' 12" ASH
N 88° E 8.66' 11" ASH

BORING STA. 1+52.6
0.0'-0.4' LIGHT SAND
0.4'-1.7' LIGHT SAND
1.7' WATER

BM #4 ELEV. 584.55
PK. 4 CAP IN EAST CORNER OF
COTTONWOOD 15' W. 12' S. OF
TOILET BLDG. - DAY USE AREA



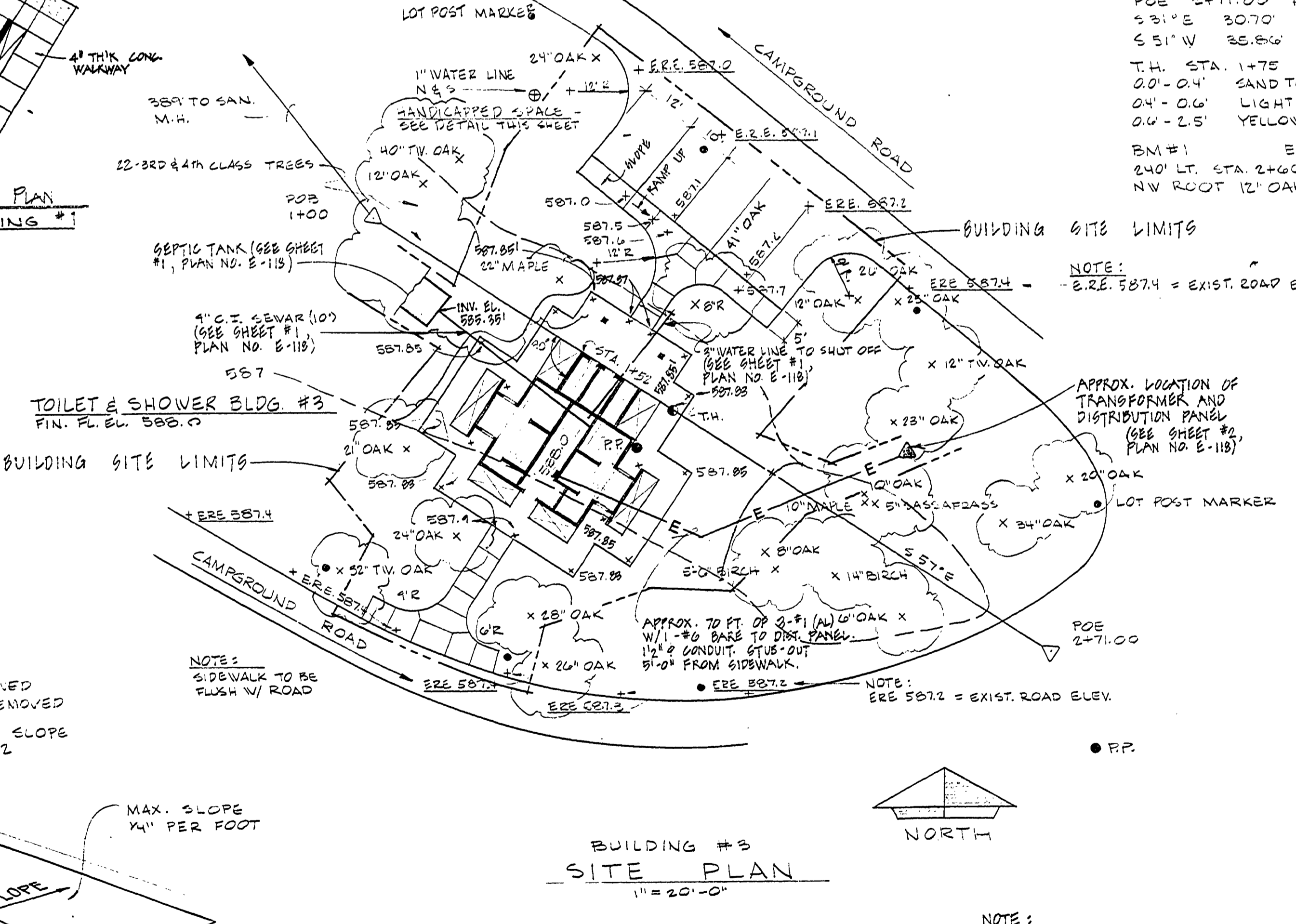
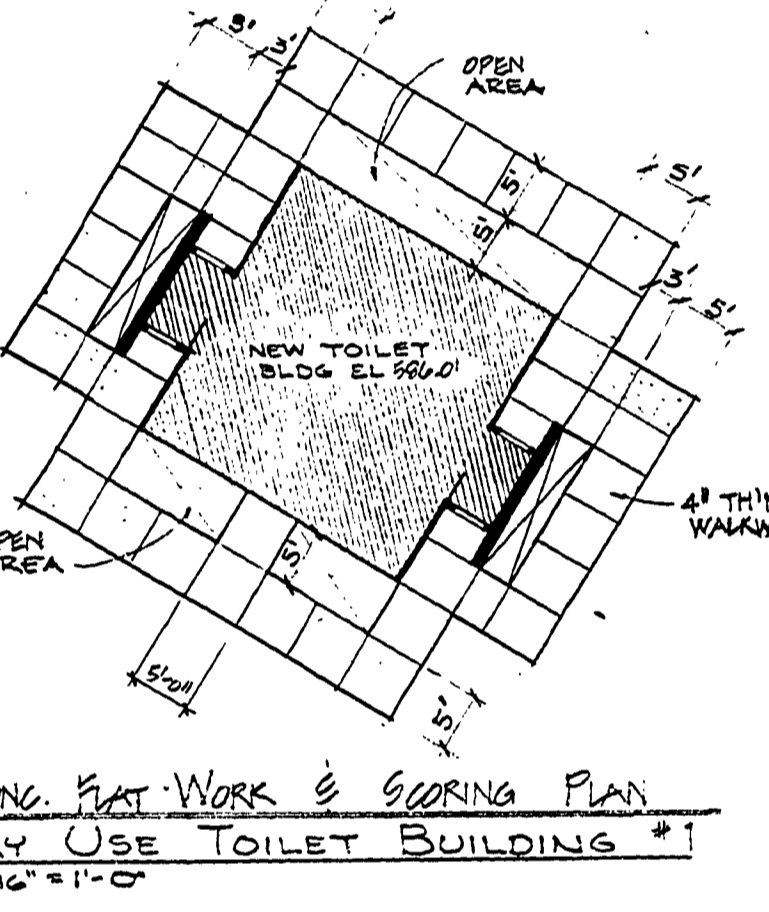
WITNESSES

POB PK. IN RD. 1/4" S. OF N. EDGE OF RD.
N 41° E 14.78' 21" OAK
S 15° W 20.22' 19" OAK
S.E. 14.00' LOT 31
N.W. 10.00' LOT 29

POB P.K. 1/4" N. OF S. EDGE OF RD.
N 70° W 13.05' 13" OAK
N 31° E 28.21' 13" OAK
N. 15.00' LOT 242
S.E. 23.00' LOT 241

BORING STA. 1+52.6
0.0'-0.4' TOPSOIL DARK BROWN SAND
0.4'-2.0' LIGHT SAND
1.7' WATER

BM #2 ELEV. 583.02
PK. 4 CAP IN N/E CORNER OF 16' OAK
30' LT. STA. 2+40



WITNESSES

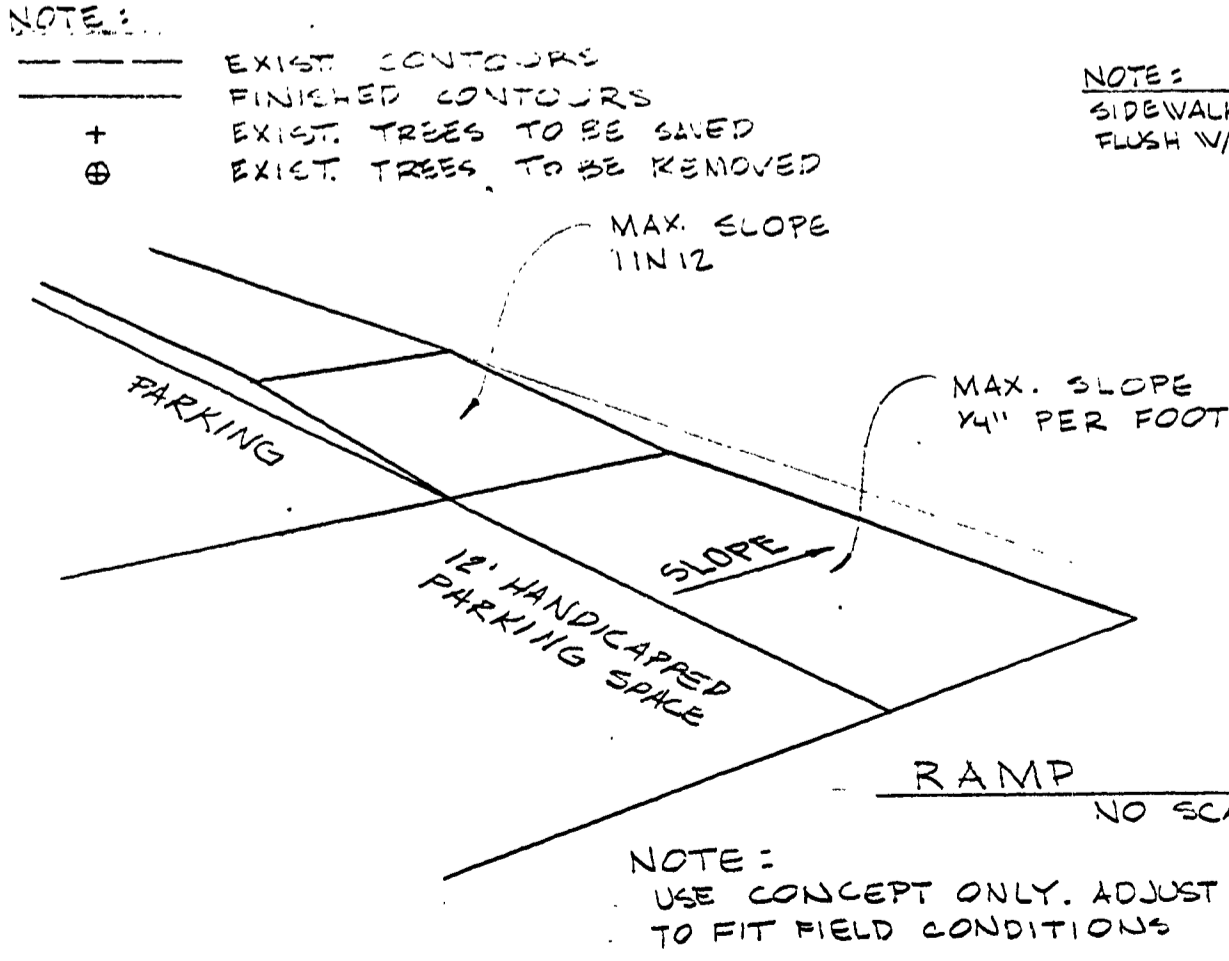
POB 1+00 3/4" PIPE
N 35° W 12.82' 22" MAPLE
S 05° E 17.25' 11" MAPLE

POB 2+71.00 PK.
S 31° E 30.70' 22" SYCAMORE
S 51° W 35.56' 24" OAK

T.H. STA. 1+75 ON B
0.0'-0.4' SAND TOPSOIL
0.4'-0.6' LIGHT GRAY SAND
0.6'-2.5' YELLOW SAND (WATER 2.5')

BM #1 ELEV. 587.59
340' LT. STA. 2+40 PK. 4 CAP IN
NW CORNER 12' OAK

NOTE: ERE 587.4 = EXIST. ROAD ELEV.



NOTE:
SCORED JOINTS SHALL BE 1/2" WIDE x 3/4" DEEP - GAINED OR TOOLED
ALL SCORED JOINTS SHALL BE FILLED W/ PLASTIC SAND.

SURVEYED BY	DRAWN BY G. TOMPKINS	NO. DATE BY	REVISIONS	NO. DATE BY	REVISIONS	MICHIGAN DEPARTMENT OF NATURAL RESOURCES	BAY CITY STATE PARK	PROJECT NO. 24-1552
DESIGNED BY	CHECKED BY	1.		3.		TOILET BUILDINGS - SITE PLANS	AREA OR PARK ONE (1) TOILET BLDG. & TWO (2) PROJECT TOILET & SHOWER BLDGS.	SHEET 2 OF 34
DATE	DATE	2.		4.		SHEET TITLE		PLAN NO. A-111