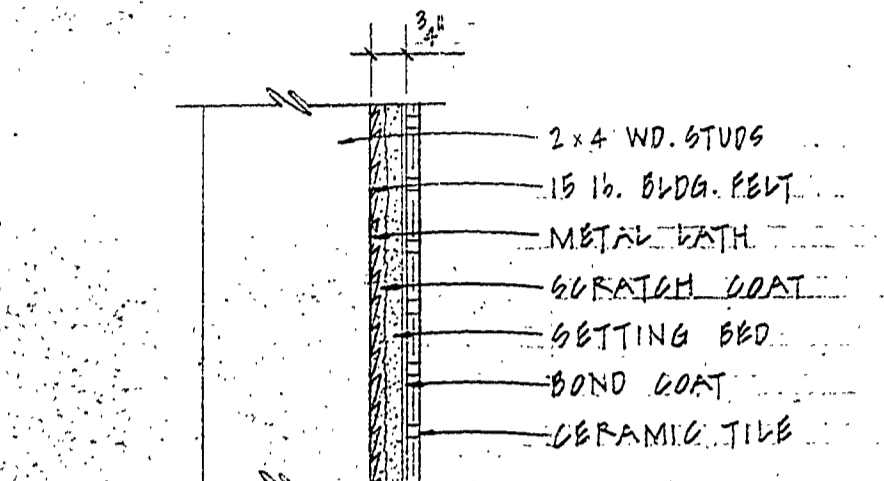
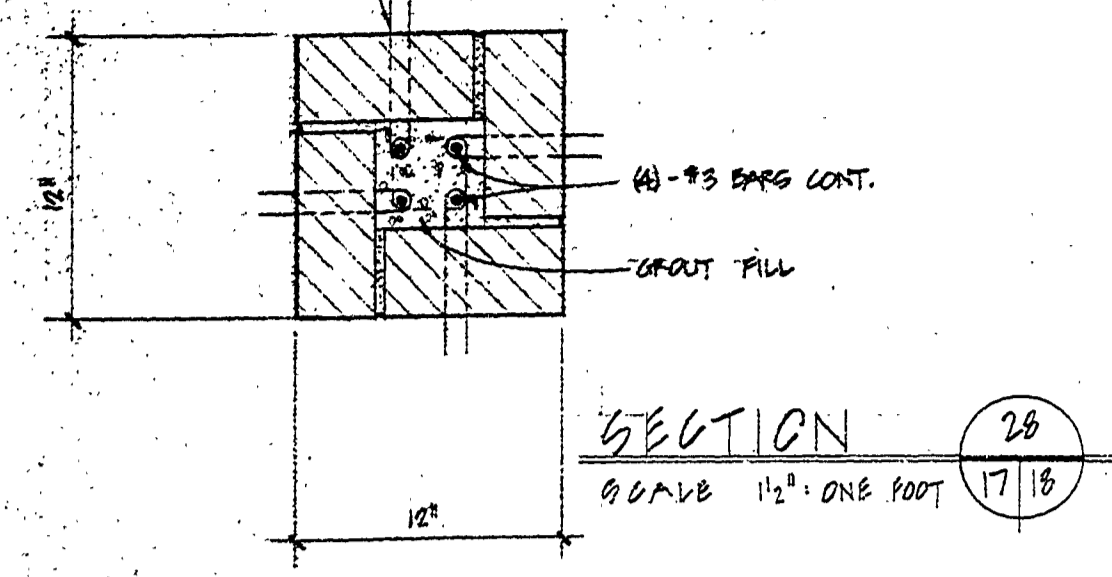
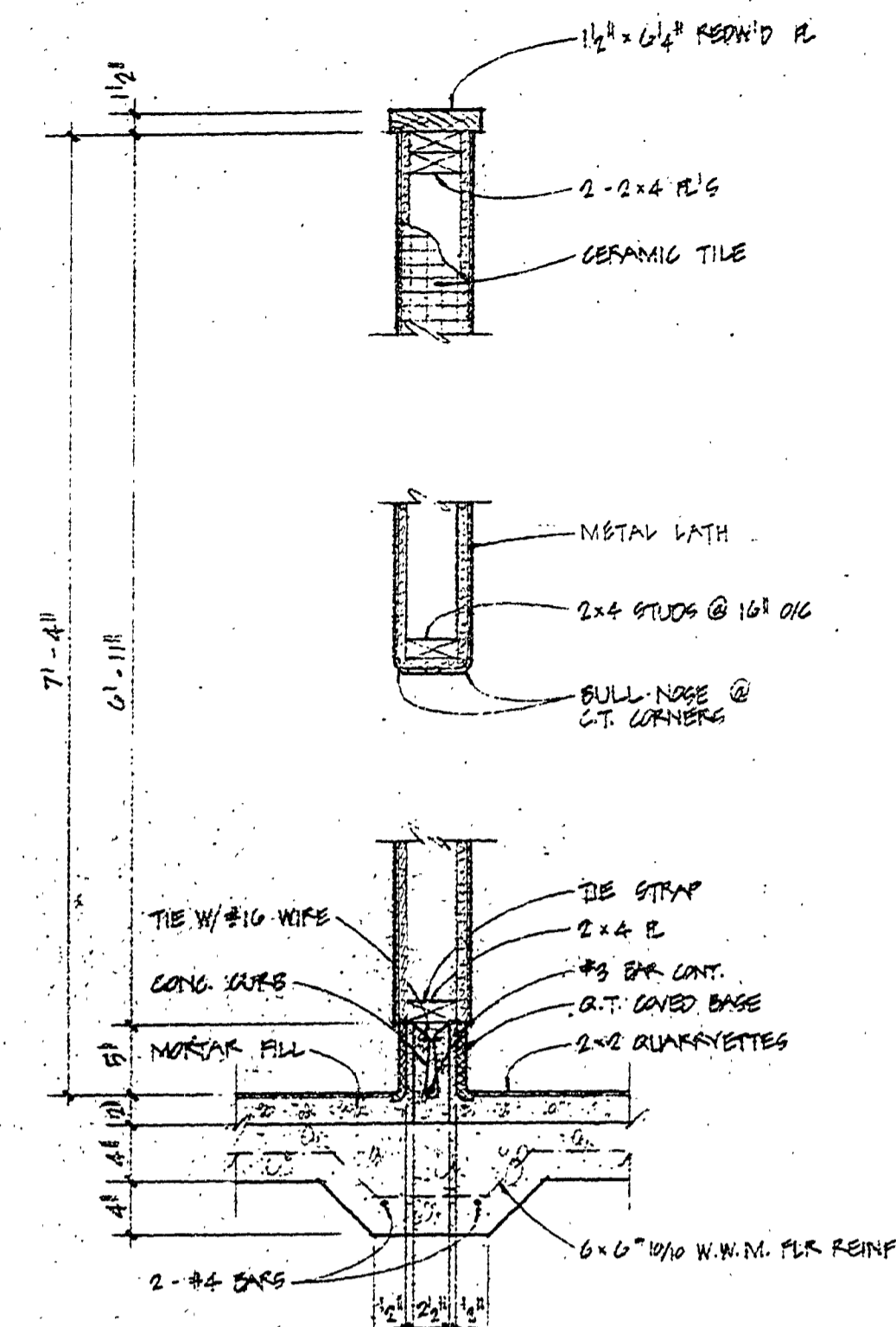


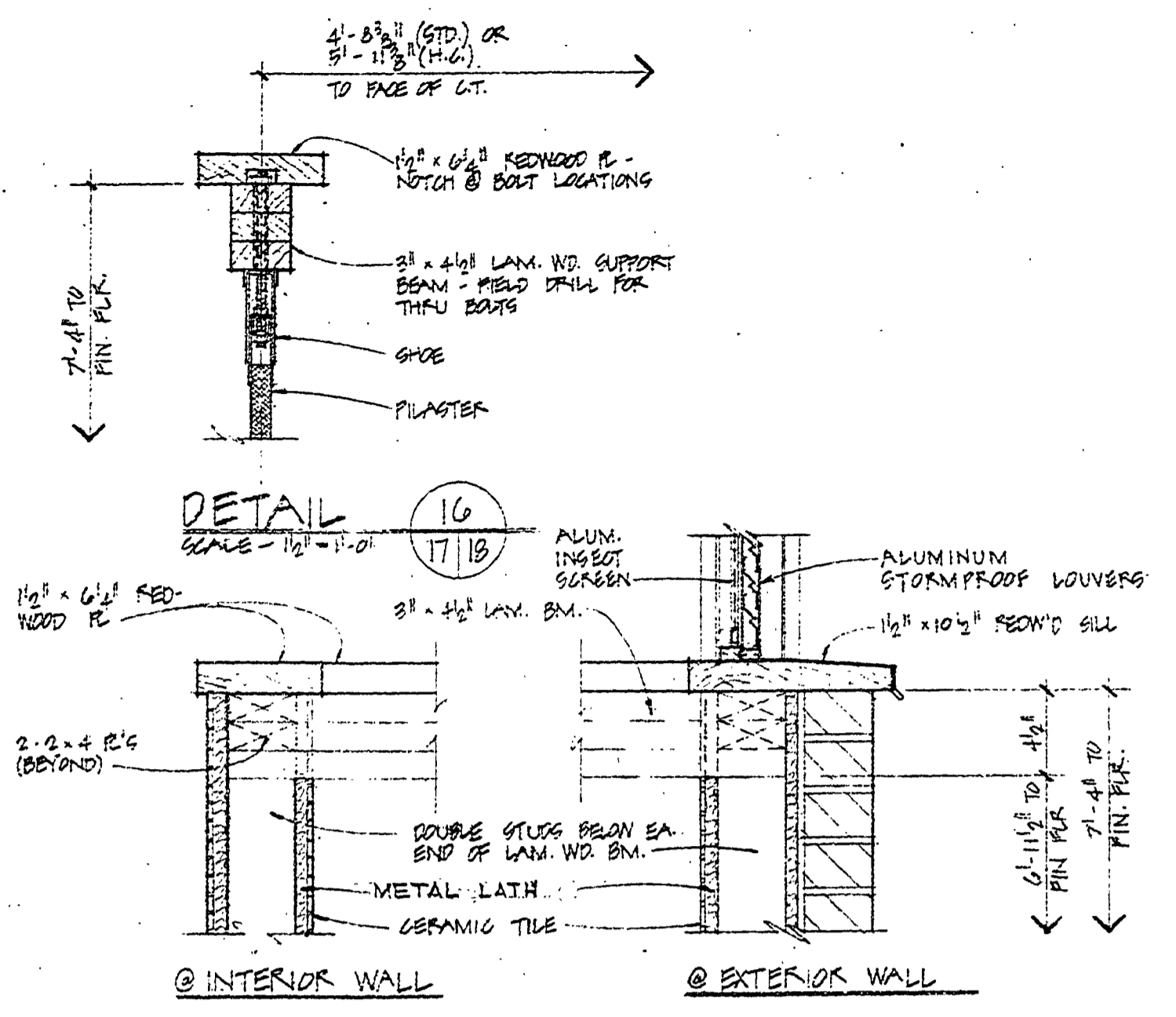
VERTICAL REINFORCEMENT SHALL BE SEALED IN PLACE AFTER THE MASONRY WORK HAS BEEN COMPLETED AND BEFORE SCROUTING. ADJUSTMENT TO POSITION AND TIE AT VERTICAL INTERVALS NOT EXCEEDING 10'. PLAGE # - #14 WIRE LOOP EXTENDING INTO CORE IN WORKING JOINTS NO COLLAR IS TO BE USED. LADDER BEGINS MORNING IS SET AFTER INSERTING END. FULL WIRE LOOP AND BAR TO PROPER POSITION AND SECURE WIRE BY TYING FREE END. TOOL JOINTS AFTER TYING OFF WIRE.



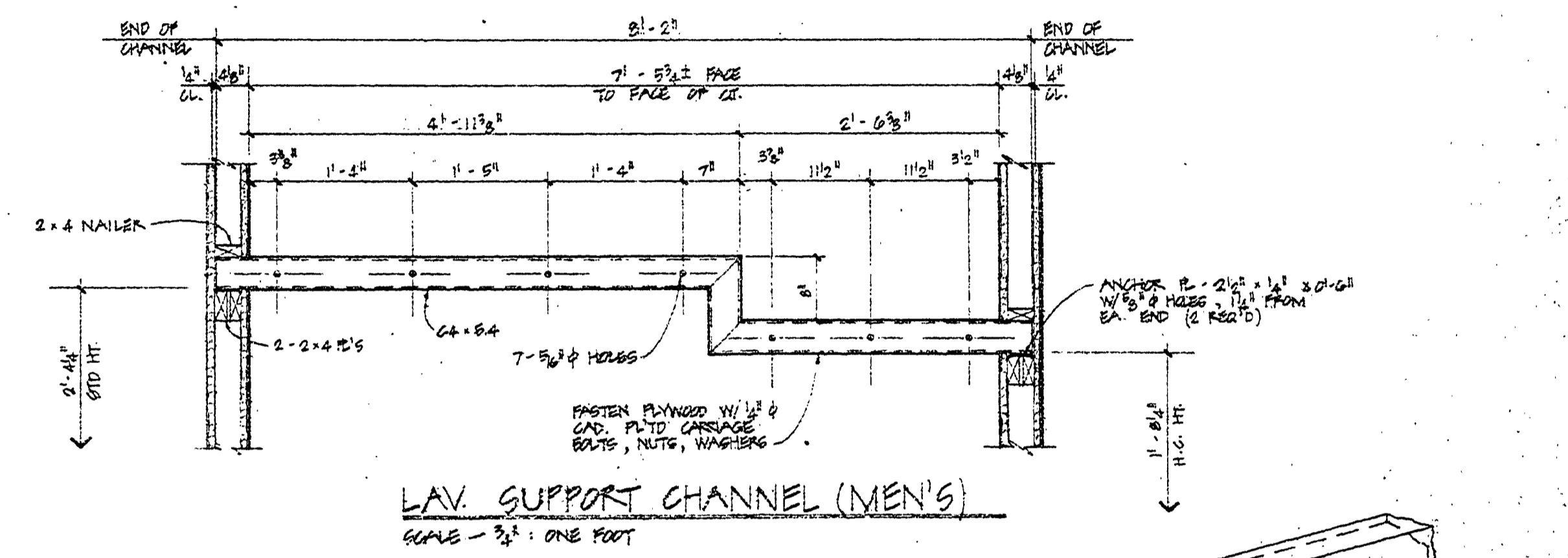
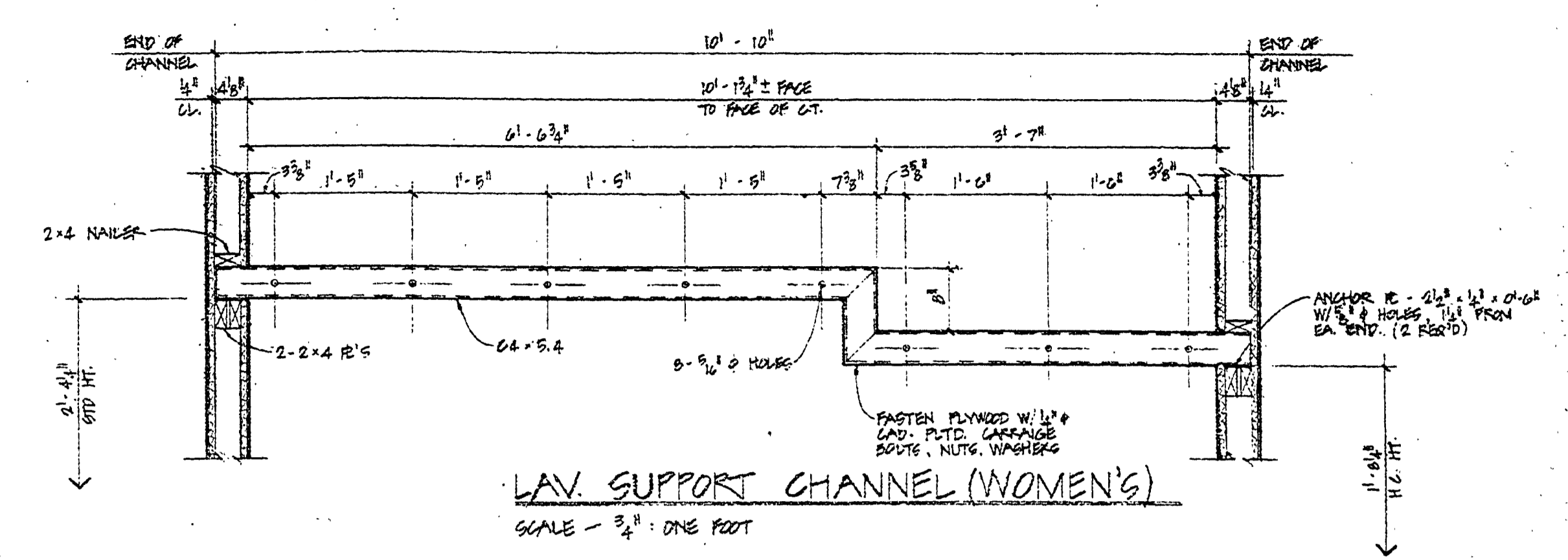
SECTION - CERAMIC TILE ON-STUD PARTITION (TYP.)
SCALE - 3/4" = ONE FOOT



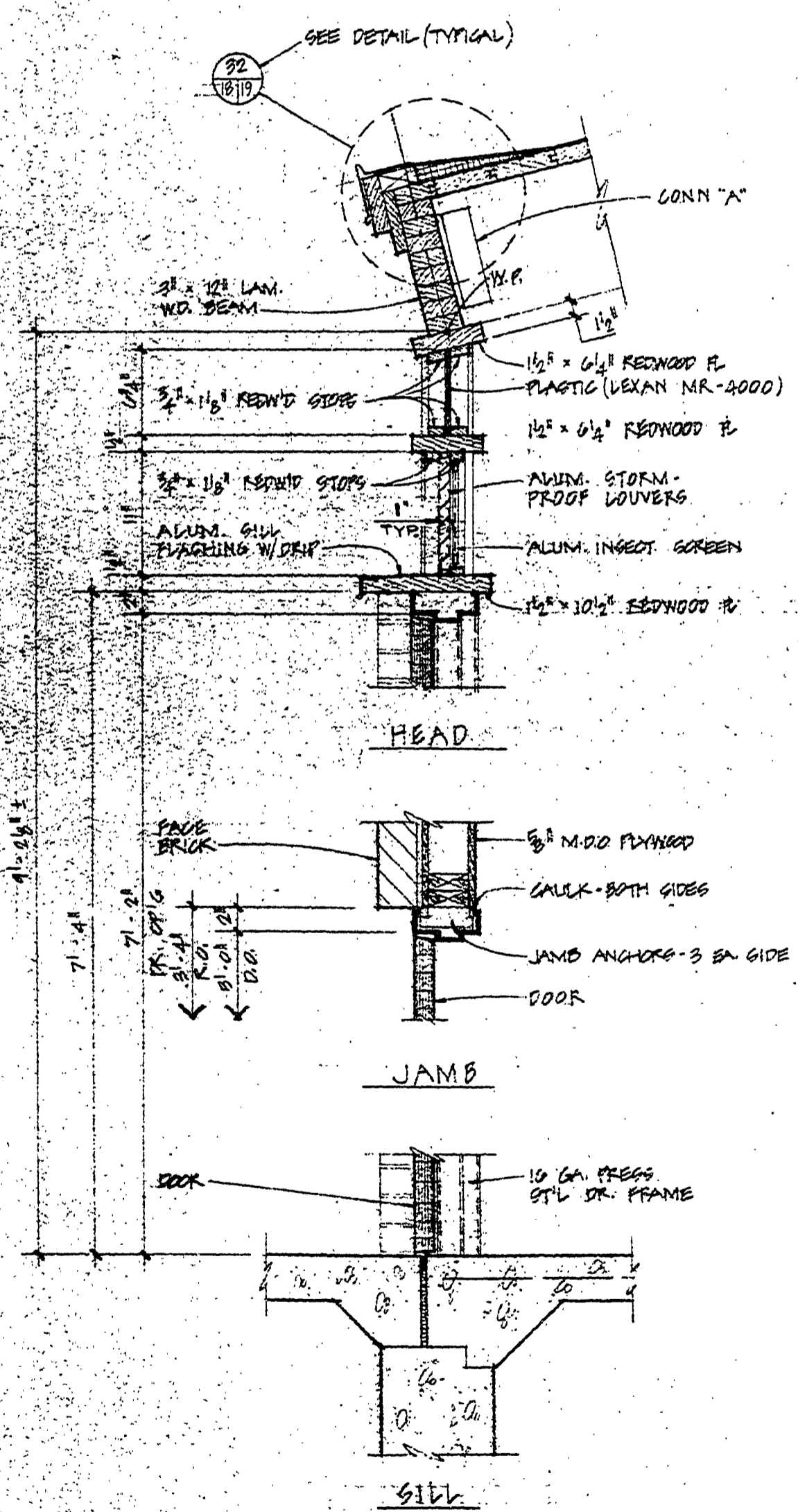
WALL SECTION 17
SCALE - 1/2" = ONE FOOT



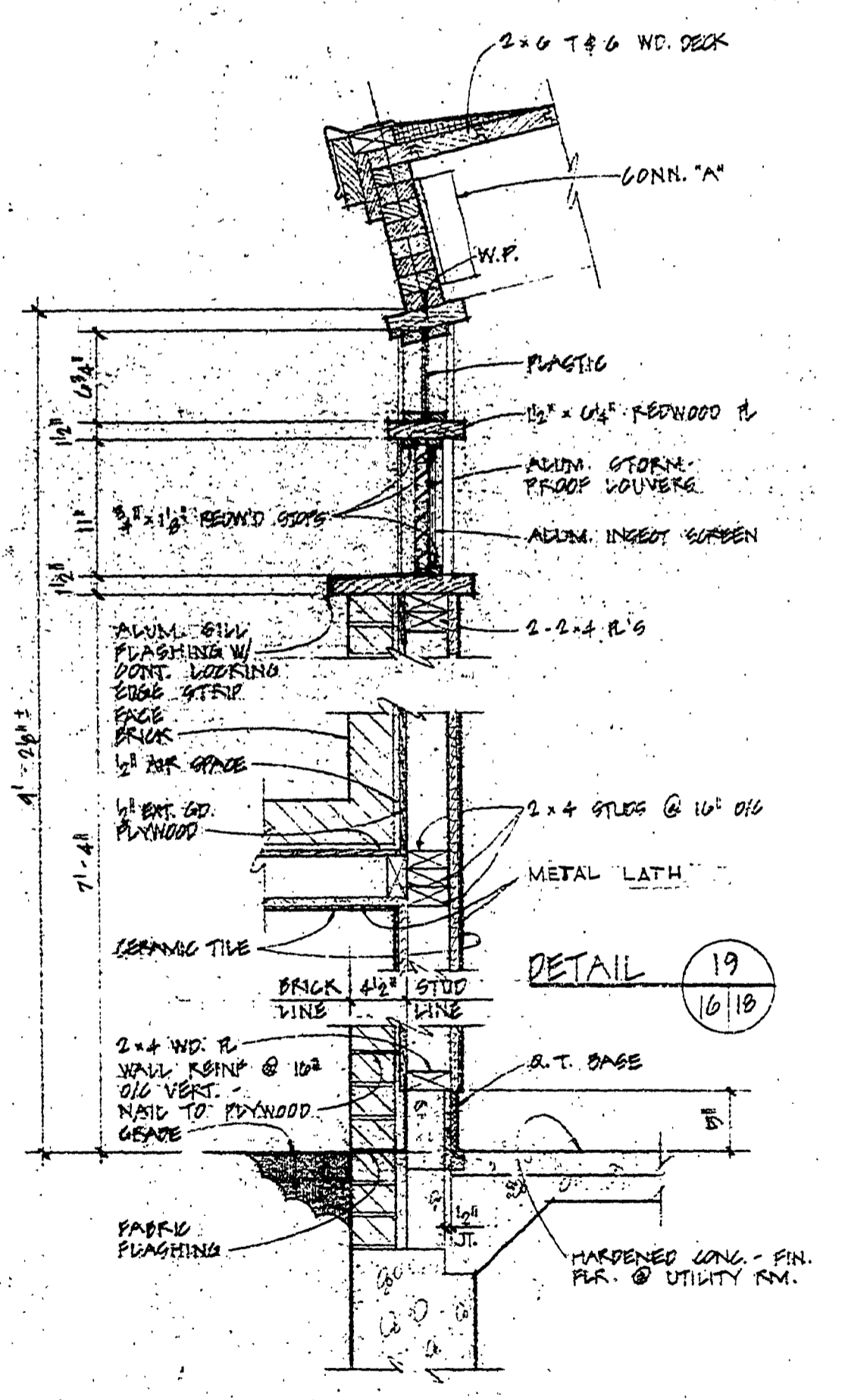
LAM. BEAM CONN. DETAILS
SCALE - 1/2" = ONE FOOT



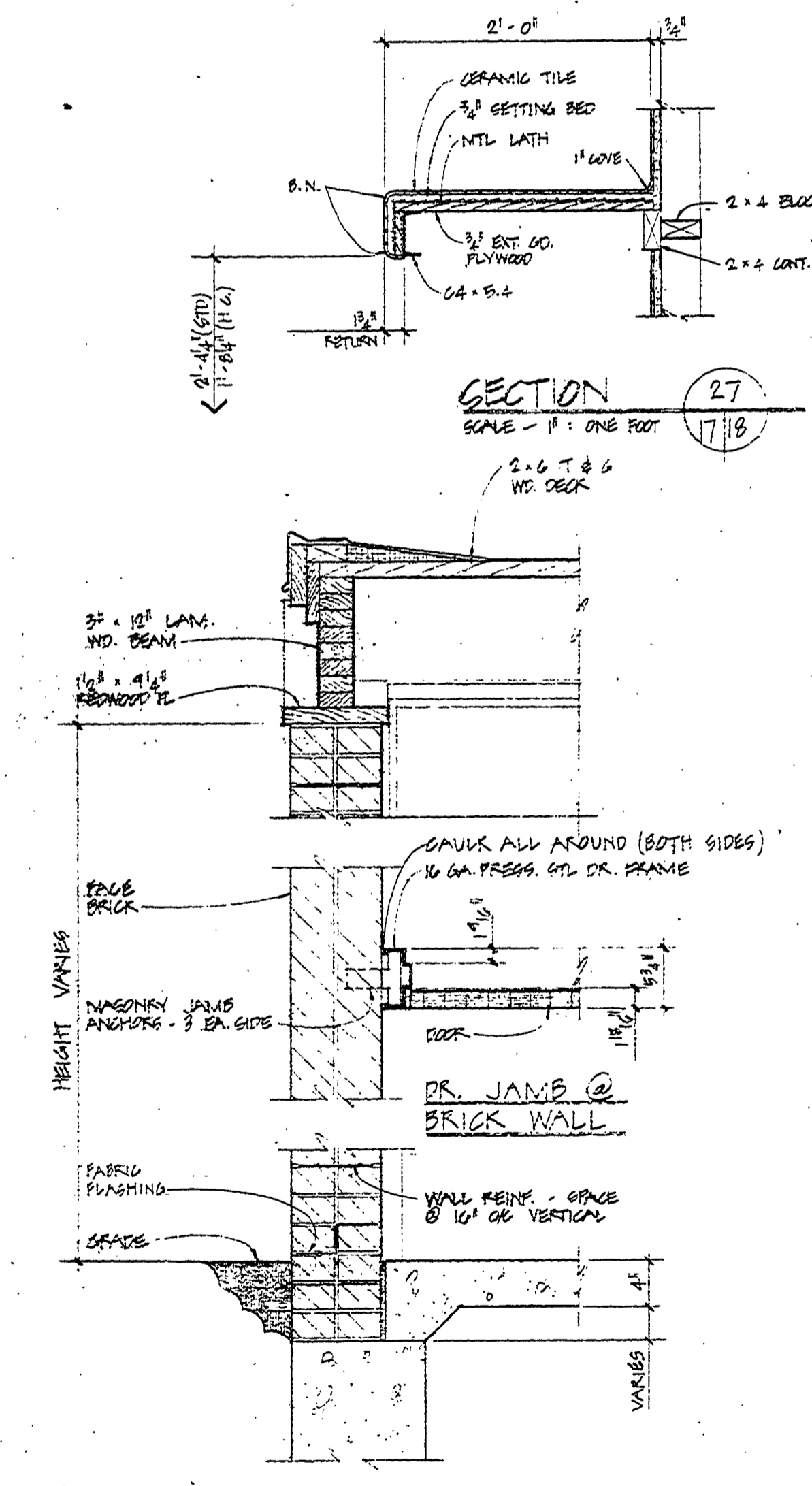
LAV. SUPPORT CHANNEL (MEN'S)
SCALE - 3/4" = ONE FOOT



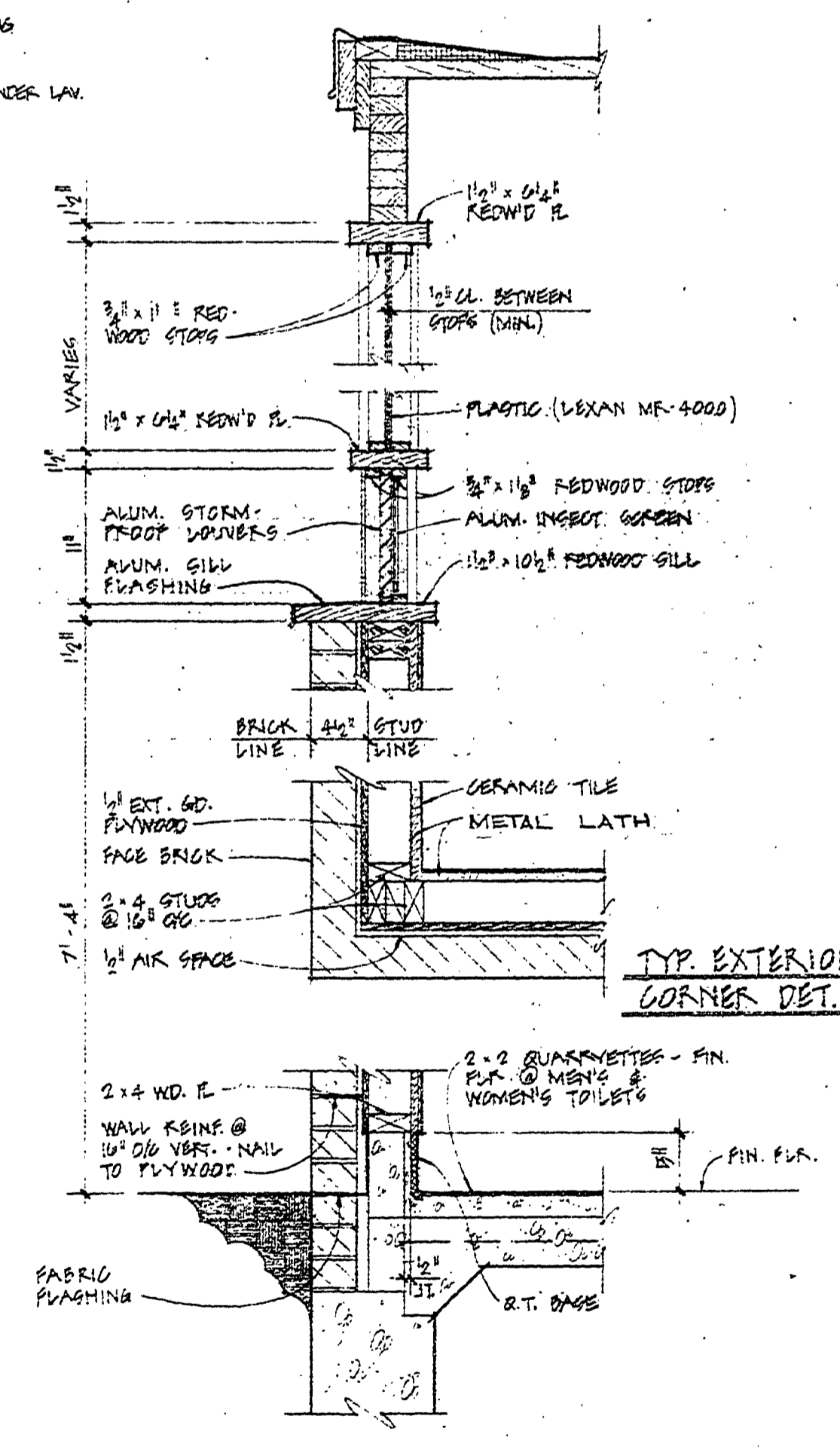
WALL SECTION 18
SCALE - 1/2" = ONE FOOT



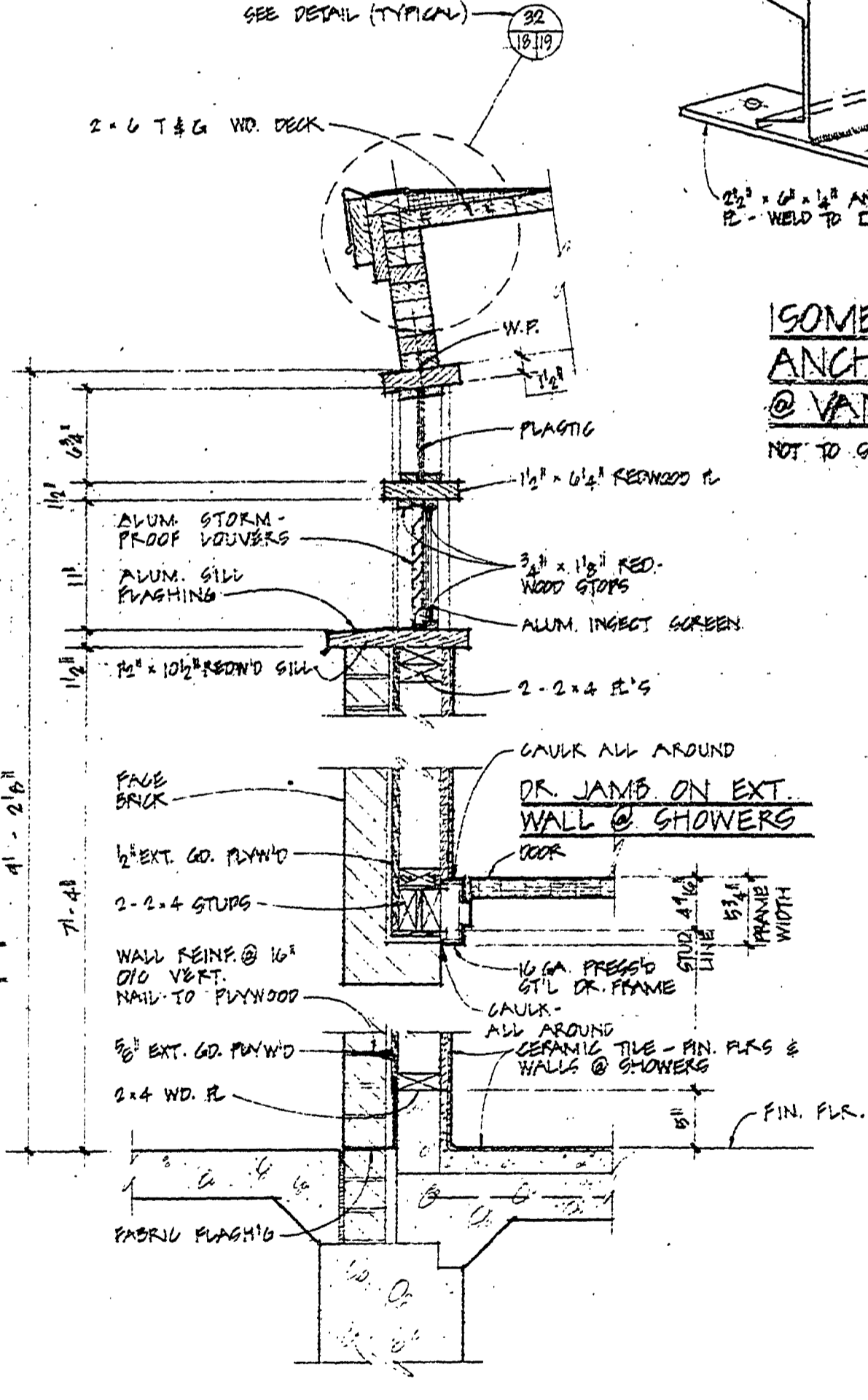
WALL SECTION 20
SCALE - 1/2" = ONE FOOT



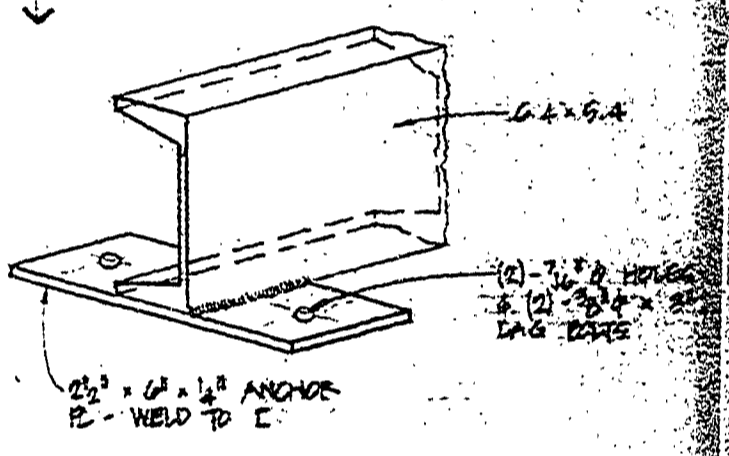
WALL SECTION 21
SCALE - 1/2" = ONE FOOT



WALL SECTION 22
SCALE - 1/2" = ONE FOOT



WALL SECTION 23
SCALE - 1/2" = ONE FOOT



ISOMETRIC - E TO ANCHOR PLATE @ VANITY
NOT TO SCALE

REVISIONS	NO.	DATE	BY	REVISIONS	NO.	DATE	BY	MICHIGAN DEPARTMENT OF NATURAL RESOURCES	WALL SECTIONS & DETAILS	DAY CITY STATE PARK AREA OR PARK	PROJECT NO. 24-1582
	1.				3.					TOILET & SHOWER BLDG. NO. 3	SHEET 18 OF 34
	2.				4.						PLAN NO. A-11