

# ALOHA STATE PARK CHEBOYGAN COUNTY CONSTRUCTION PLANS FOR BEACH GROINS PROJECT NO. 24-1640

**BENCH MARKS**

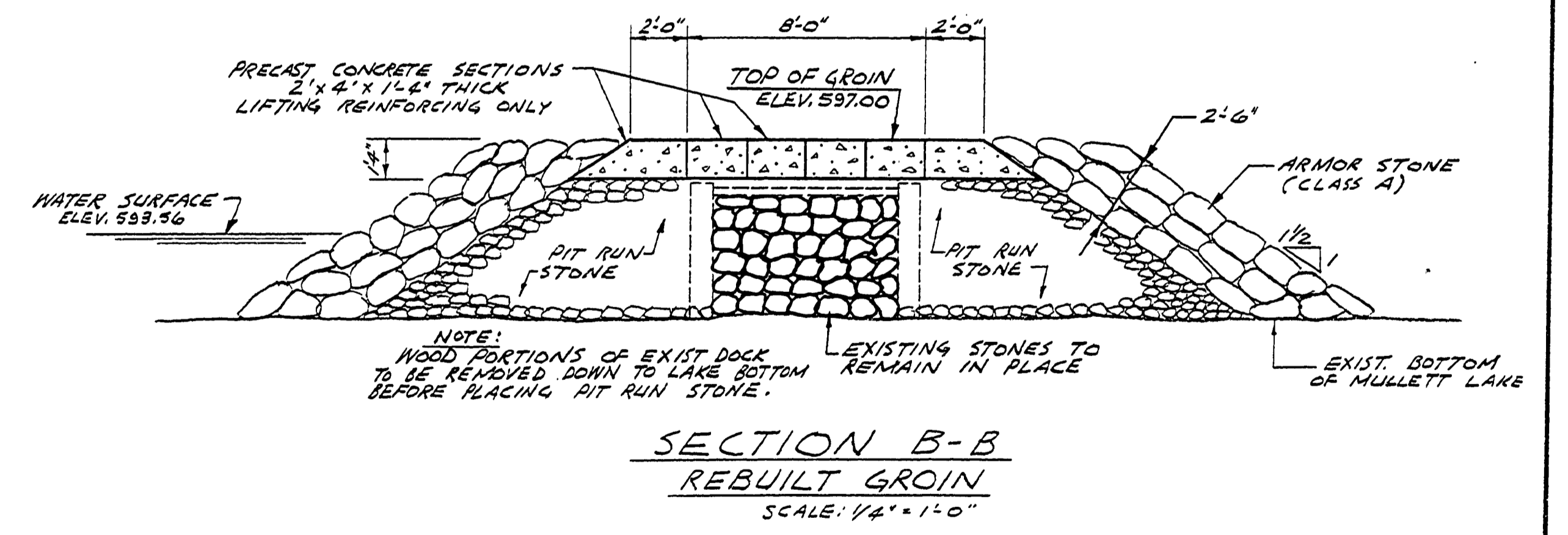
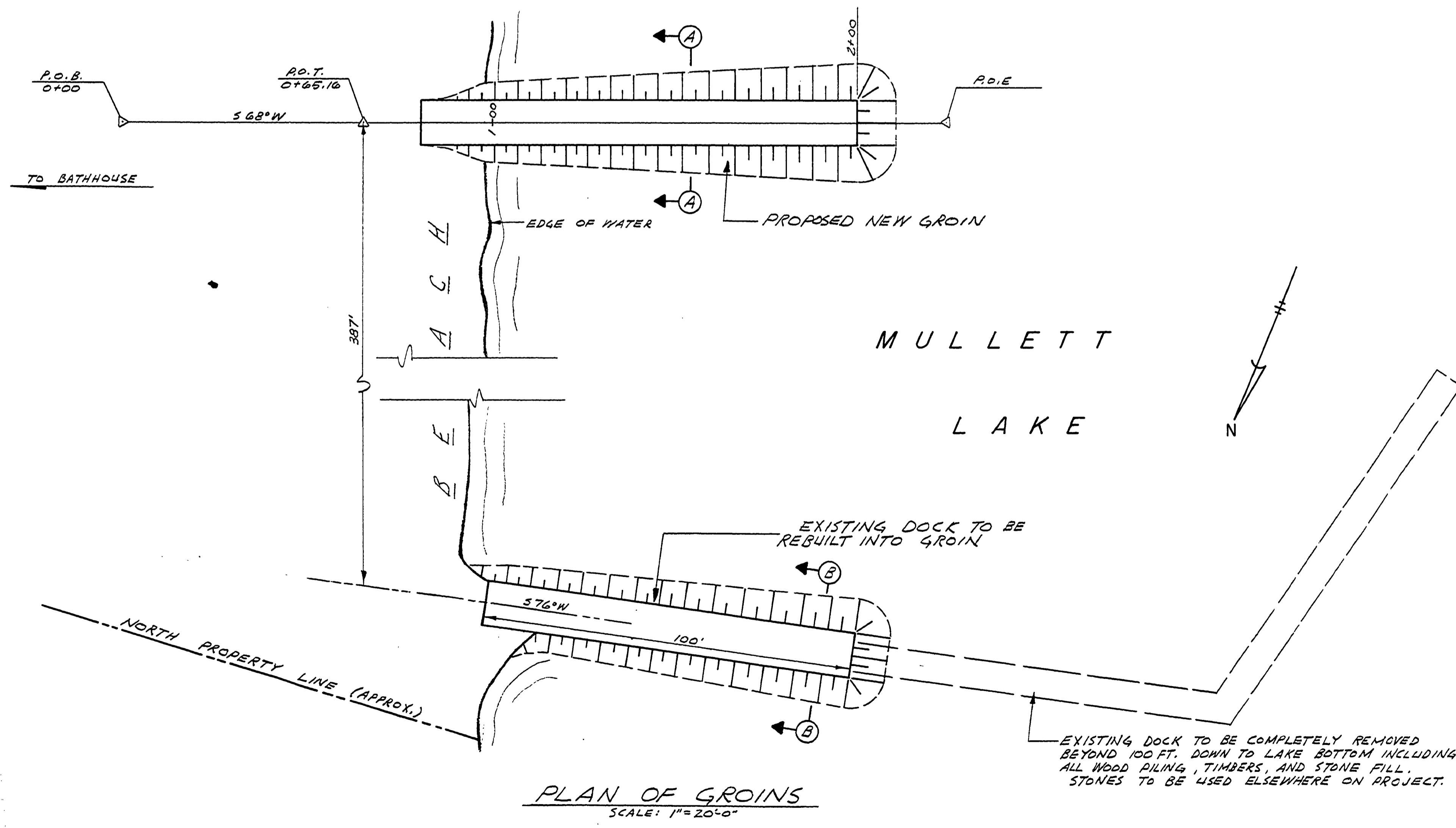
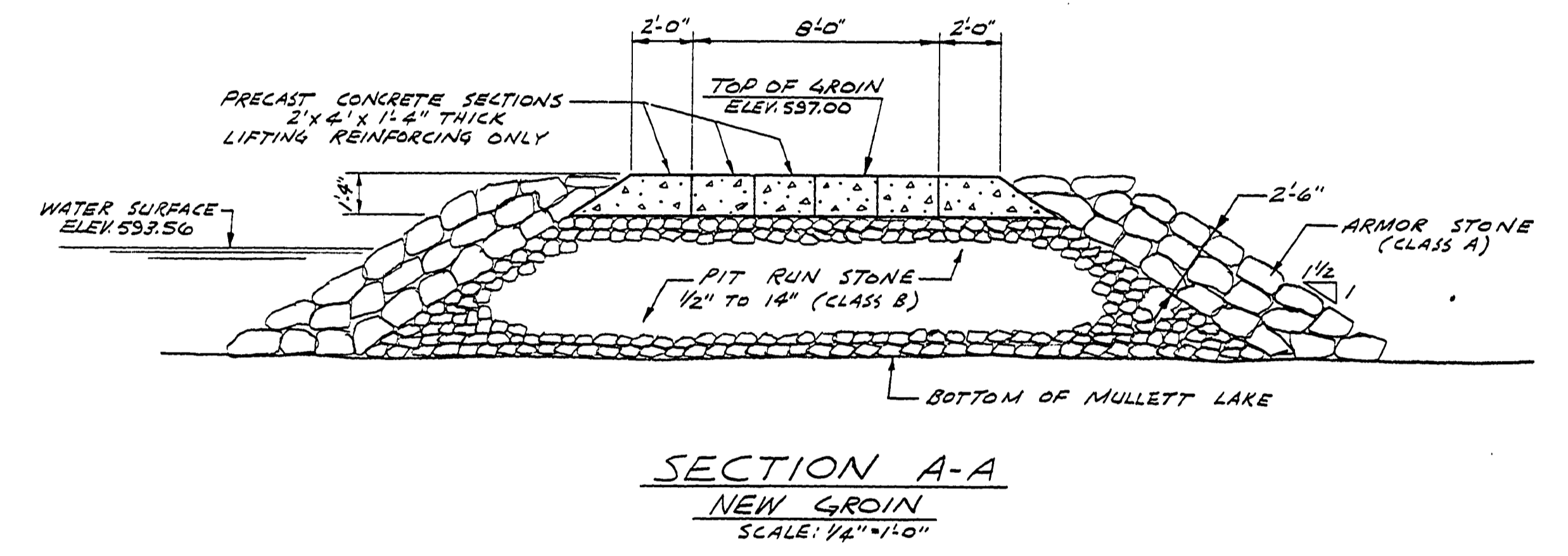
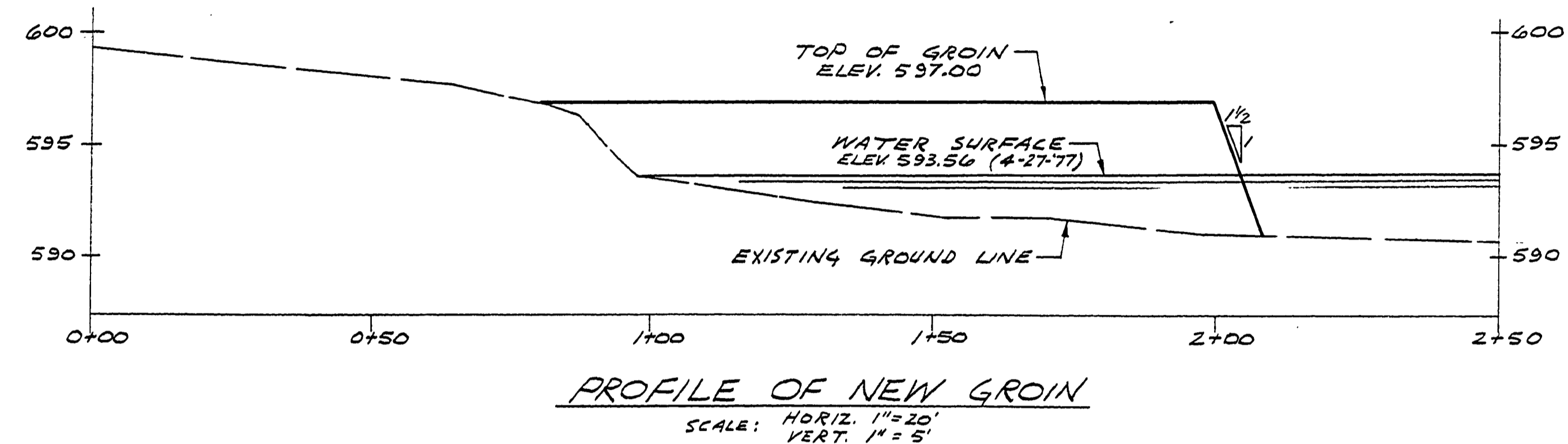
B.M. #31 ELEV. 601.70  
R.R. SPIKE IN E. SIDE OF TRANSFORMER POLE  
IN LOT #56. APPROX. 55' EAST OF CENTER  
TOILET BLDG. ON E. SIDE OF E. CAMPGROUND RD.

B.M. #33 ELEV. 601.71  
CHISELED "D" ON W. SIDE OF STEP INTO PUMPHOUSE.  
APPROX. 120' S.W. OF CONTACT STATION.

**WITNESSES**

P.O.B. 1/2" PIPE W/CAP  
N80°E, 14.50', PK 1 TAG IN 3" MAPLE  
S 2°E, 18.40', PK 1 TAG IN 22" OAK

P.O.T. 1/2" PIPE W/CAP  
S 40°W, 18.03', PK 1 TAG IN 18" COTTONWOOD  
S 63°E, 42.42', PK 1 TAG IN 10" YELLOW BIRCH



BUILDING COMMITTEE APPROVAL	
BY: _____	DATE _____
RECOMMENDED FOR APPROVAL: <i>[Signature]</i> 6-15-77	
ENGINEERING OR ARCHITECTURAL SUPERVISOR DATE	
RECOMMENDED FOR APPROVAL: _____	
PROJECT AND PLAN COORDINATOR DATE	
DIVISION/REGION APPROVAL	
BY: _____	DATE _____
ENGINEERING DIVISION	
APPROVED: _____	
CHIEF ENGINEER DATE	

DESIGNED BY	THOMPSON	4-77	DRAWN BY	BOYCE	5-77	NO. DATE BY	REVISIONS	NO. DATE BY	REVISIONS	MICHIGAN DEPARTMENT OF NATURAL RESOURCES	ALOHA STATE PARK AREA OR PARK PROJECT BEACH GROINS	PROJECT NO. 24-1640	SHEET 1 OF 1	PLAN NO. E-117
DESIGNED BY	HAEUSLER	5-77	CHECKED BY			1.		3.		PLAN, PROFILE, & SECTIONS	SHEET TITLE			
DATE			DATE			2.		4.						