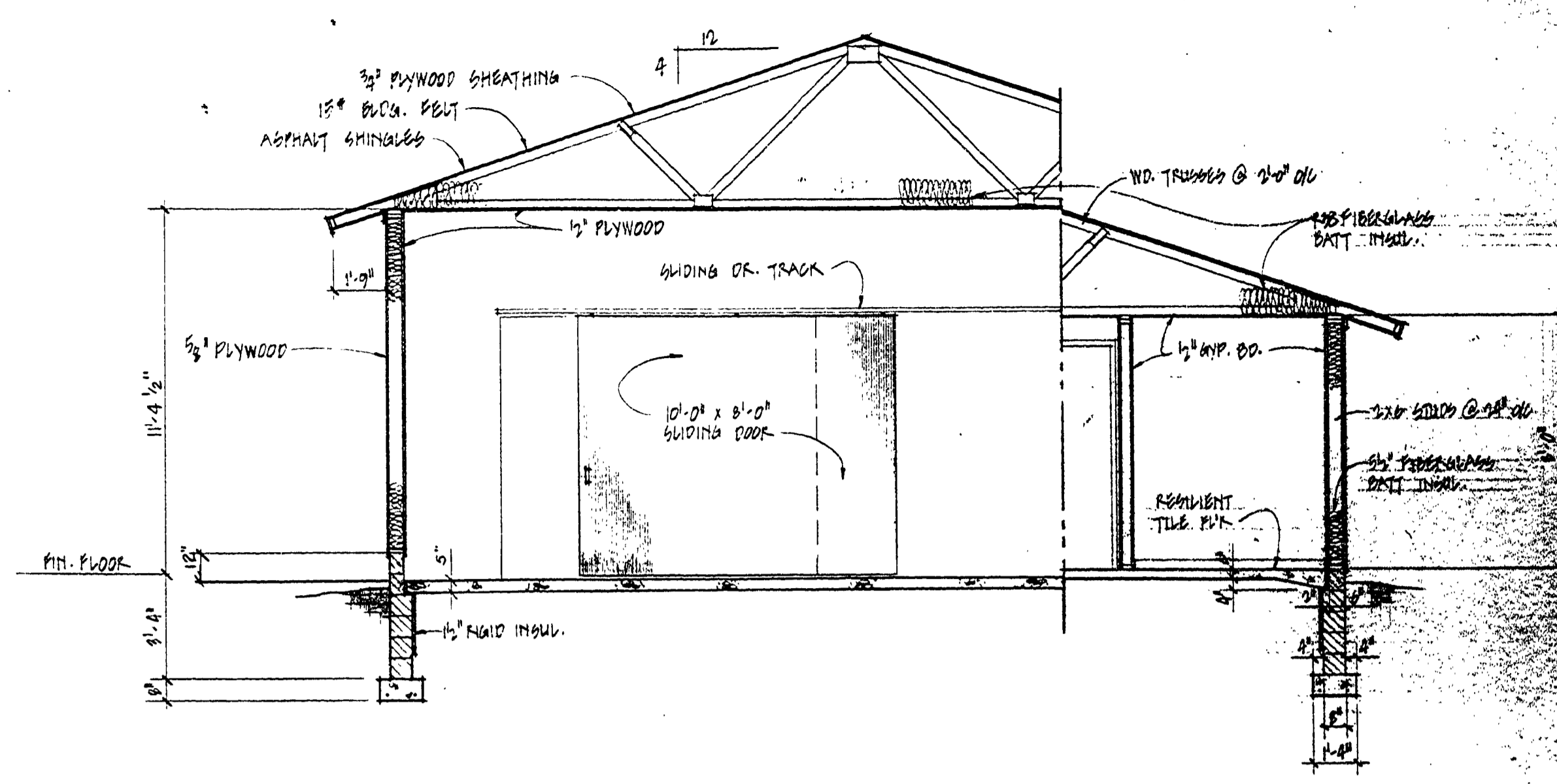
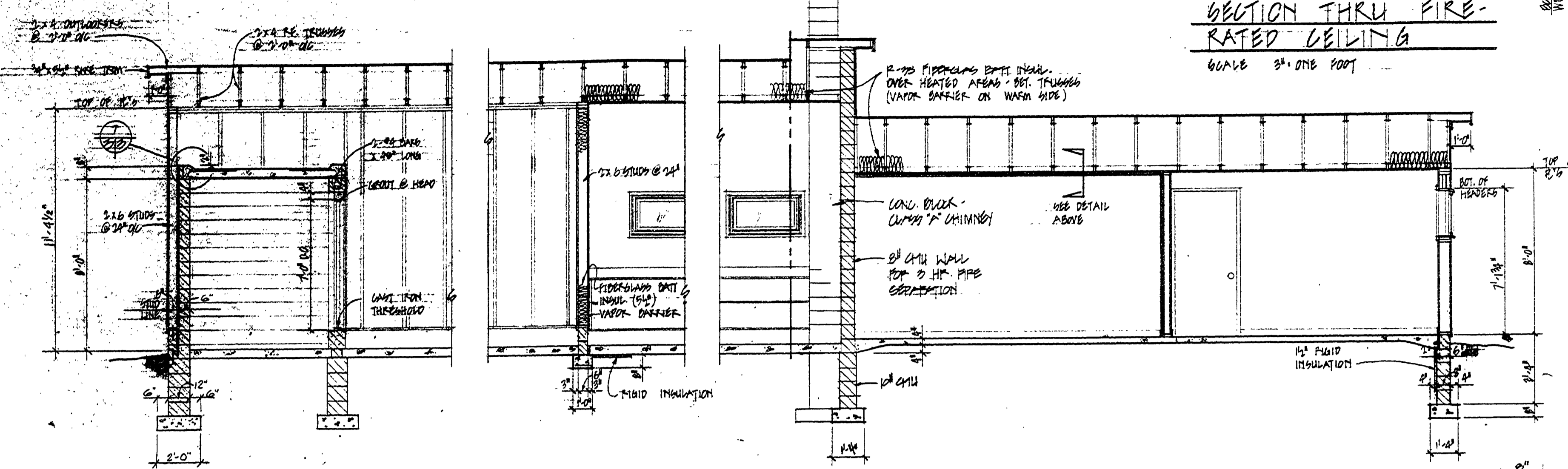


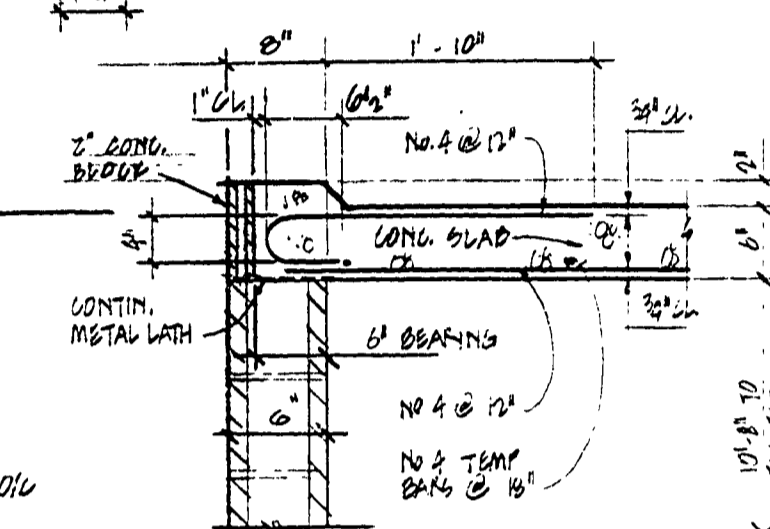
**SECTION THRU FIRE-RATED CEILING**  
SCALE 3/4" = 1' ONE FOOT



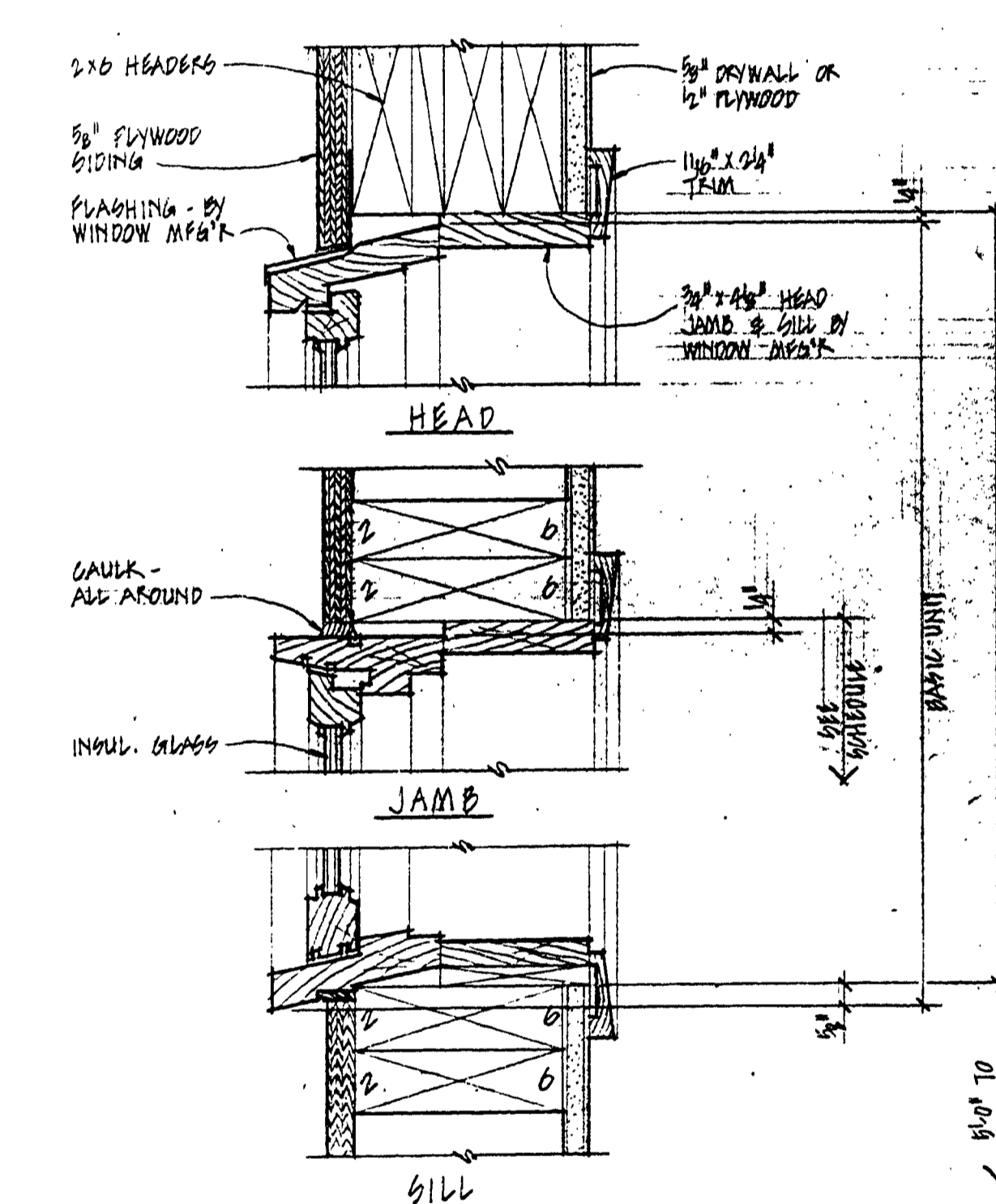
**TRANSVERSE SECTION**  
SCALE 1/4" = 1' ONE FOOT



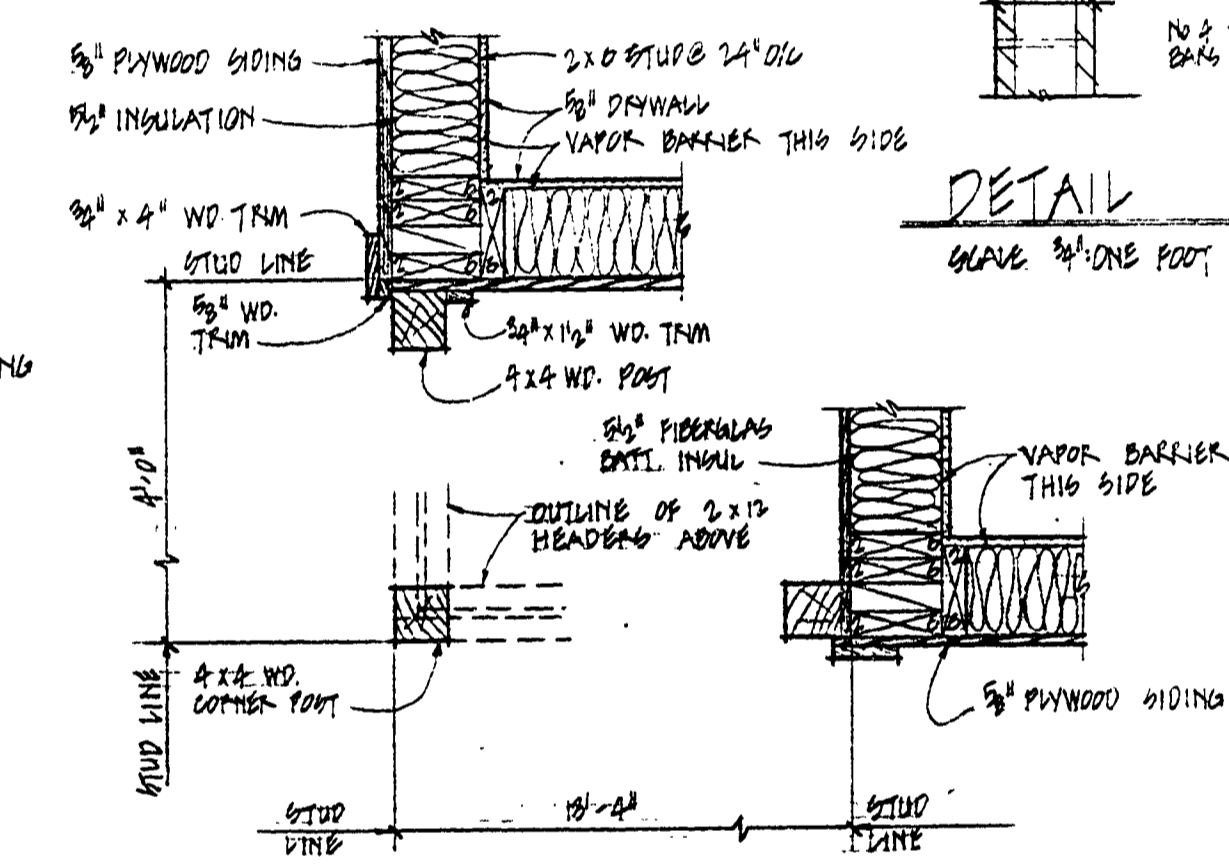
**LONGITUDINAL SECTION**  
SCALE 1/4" = 1' ONE FOOT



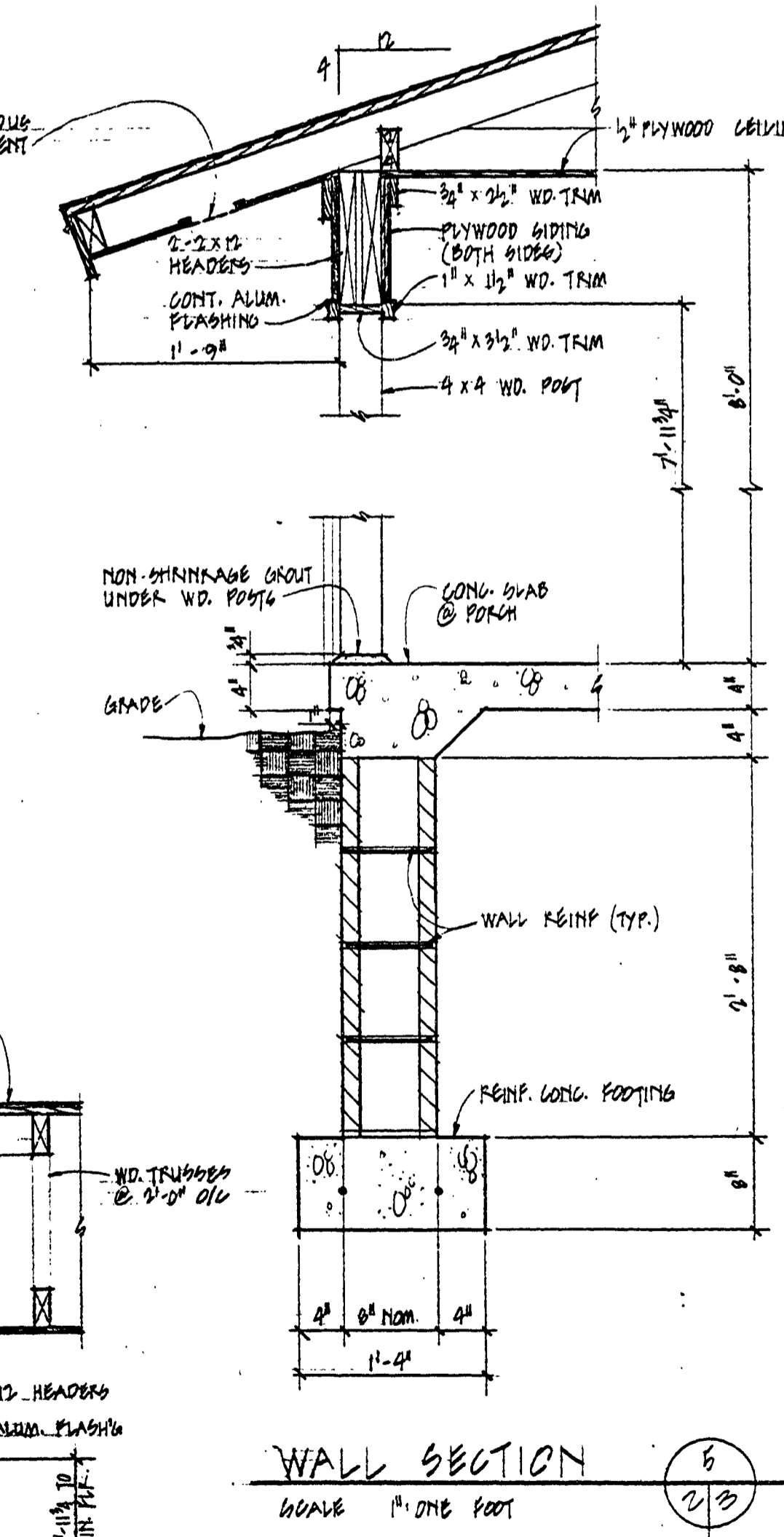
**DETAIL**  
SCALE 3/4" = 1' ONE FOOT



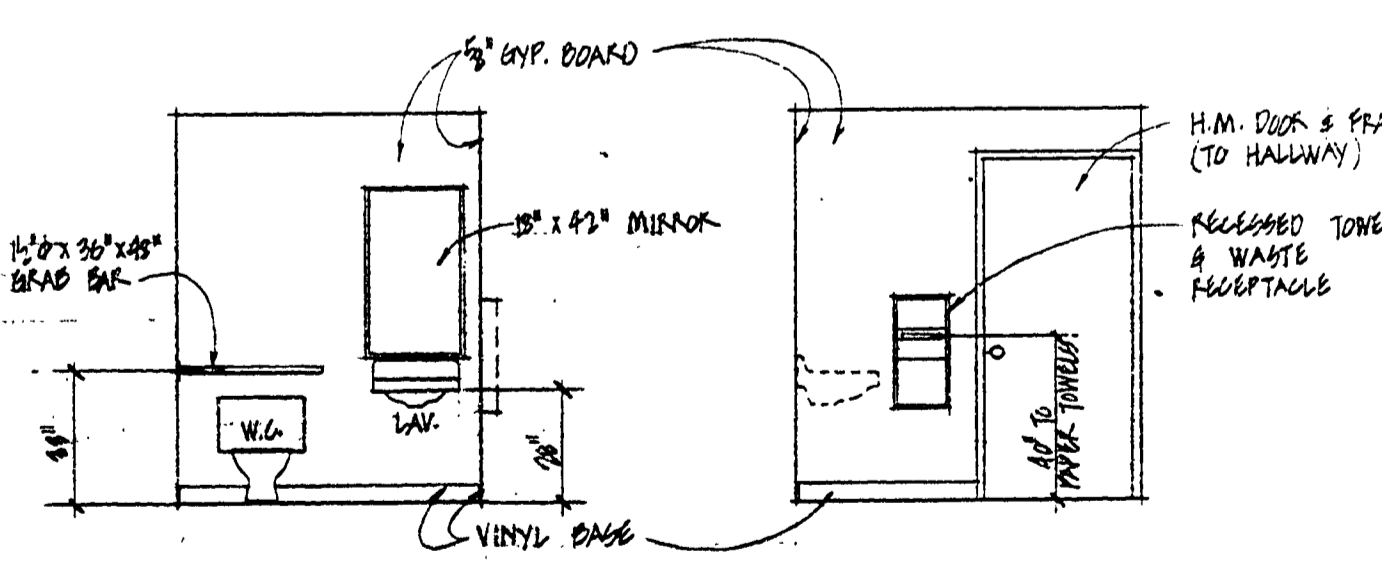
**WINDOW DETAILS**  
SCALE 3/4" = 1' ONE FOOT



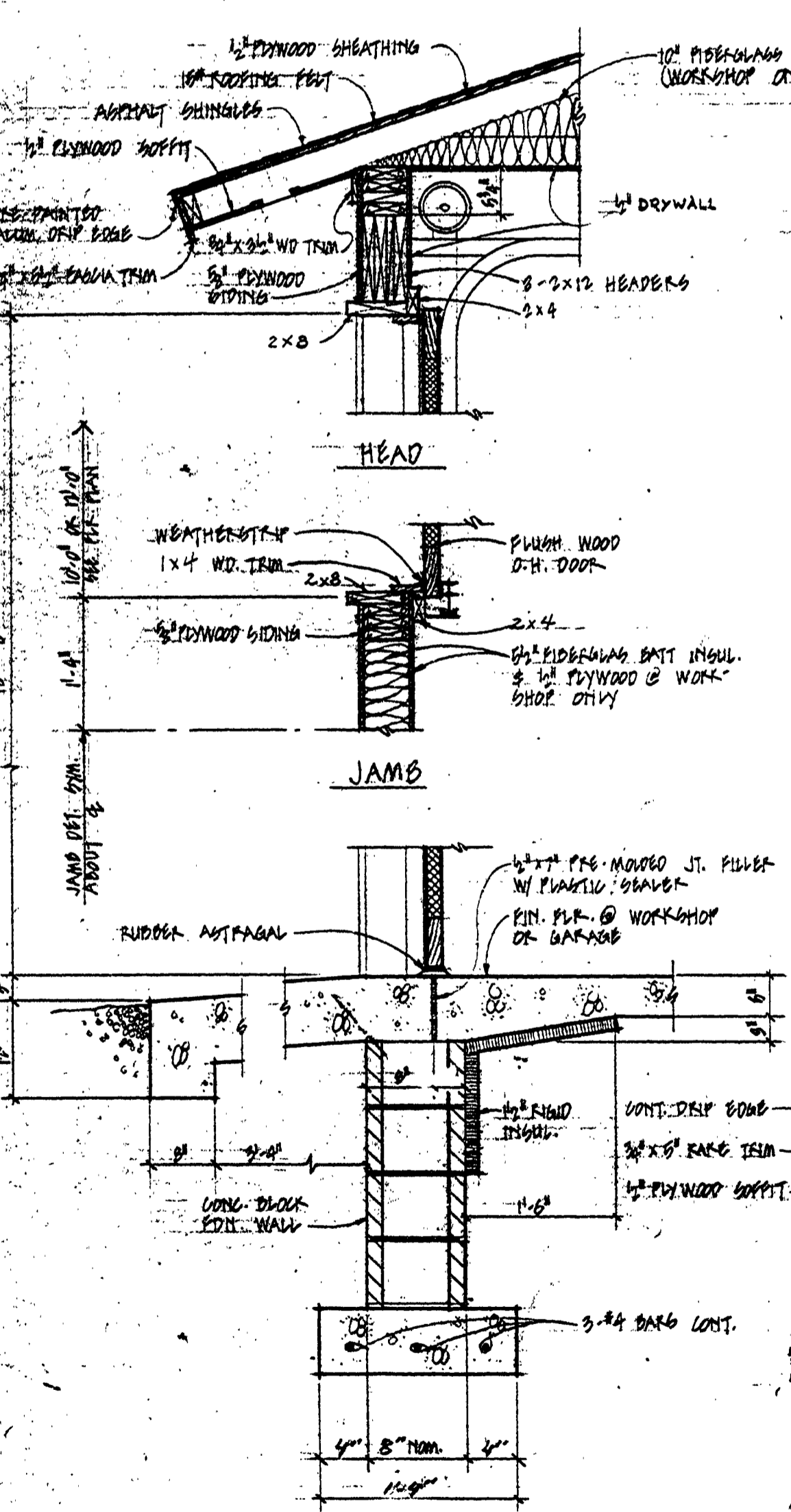
**PLAN SECTION**  
SCALE 1" = 1' ONE FOOT



**WALL SECTION**  
SCALE 1" = 1' ONE FOOT

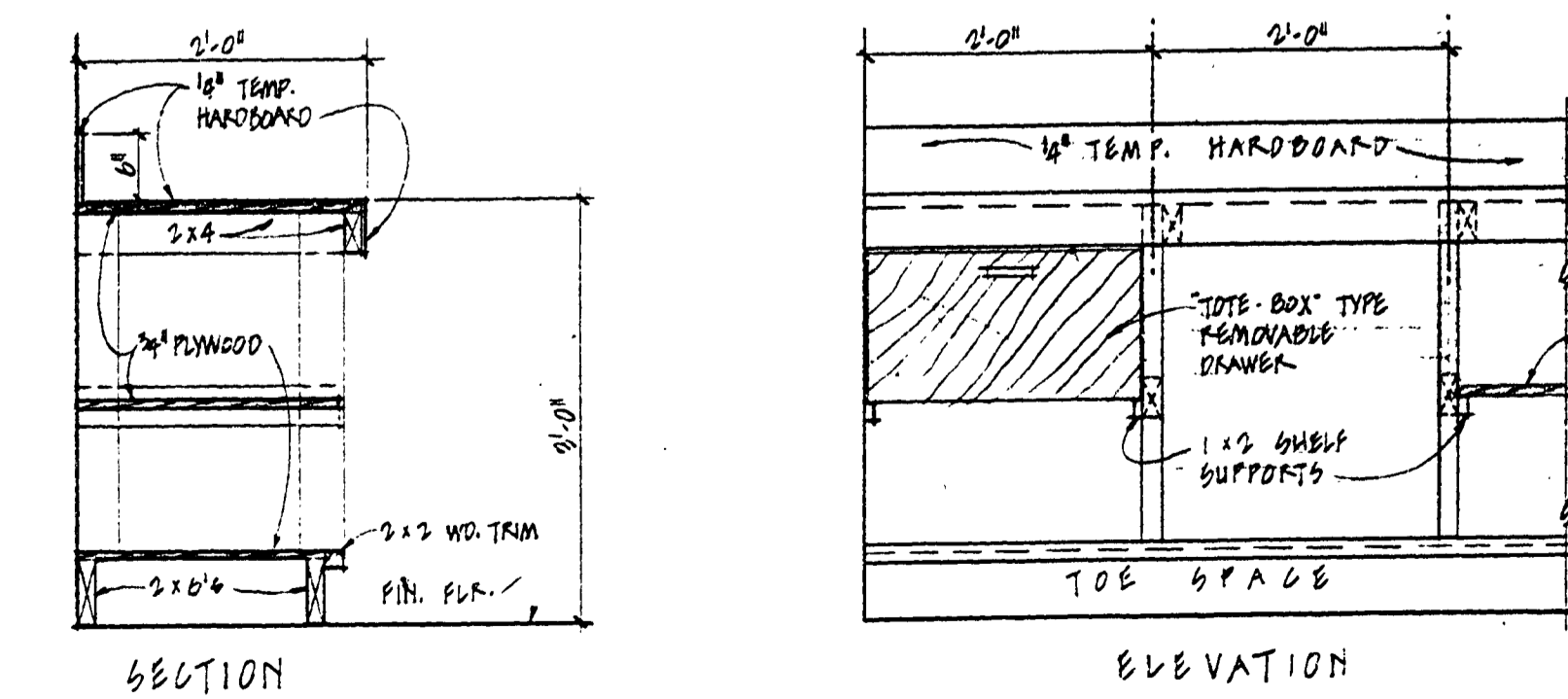


**TOILET RM. ELEVATIONS**  
SCALE 1/4" = 1' ONE FOOT  
2 REAR (1 THRU & 1 OPPOSITE)



**WALL SECTION**  
SCALE 3/4" = 1' ONE FOOT

**SECTION**  
SCALE 1" = 1' ONE FOOT



**WORKBENCH DETAILS**  
SCALE 3/4" = 1' ONE FOOT

SURVEYED BY		DRAWN BY <i>gp</i>		NO. 100		NO. DATE BY		REVISIONS		NO. DATE BY		REVISIONS		MICHIGAN DEPARTMENT OF NATURAL RESOURCES		SECTION & DETAILS		PENABIO STEPS PARK, IRON CO., MI.		PROJECT NO. 04-1000	
DESIGNED BY		CHECKED BY		DATE		DATE		DATE		DATE		DATE		AREA OR PARK		SHEET 9 OF 6		PROJECT		PLAN NO. A-100	