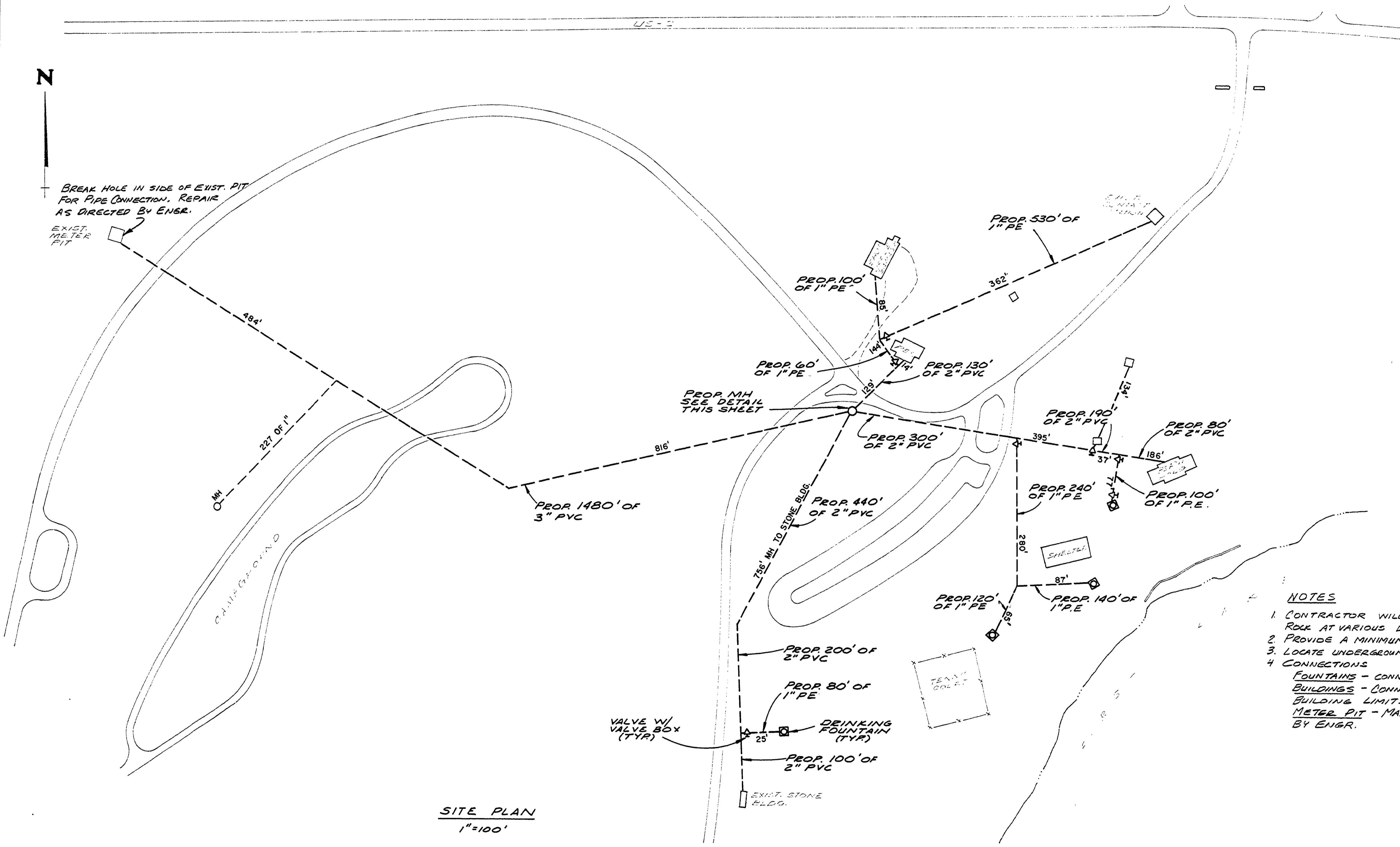


VICINITY MAP

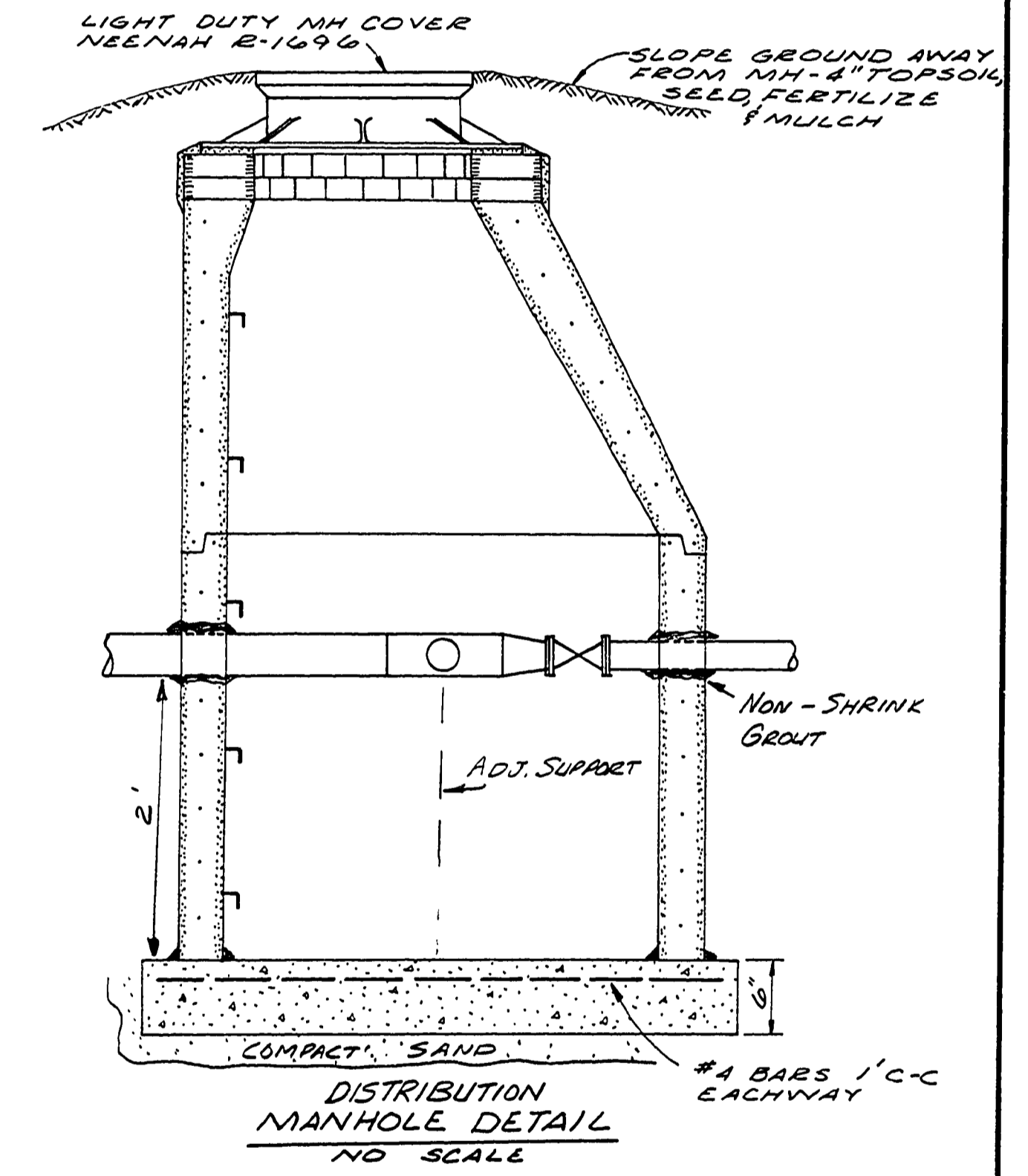
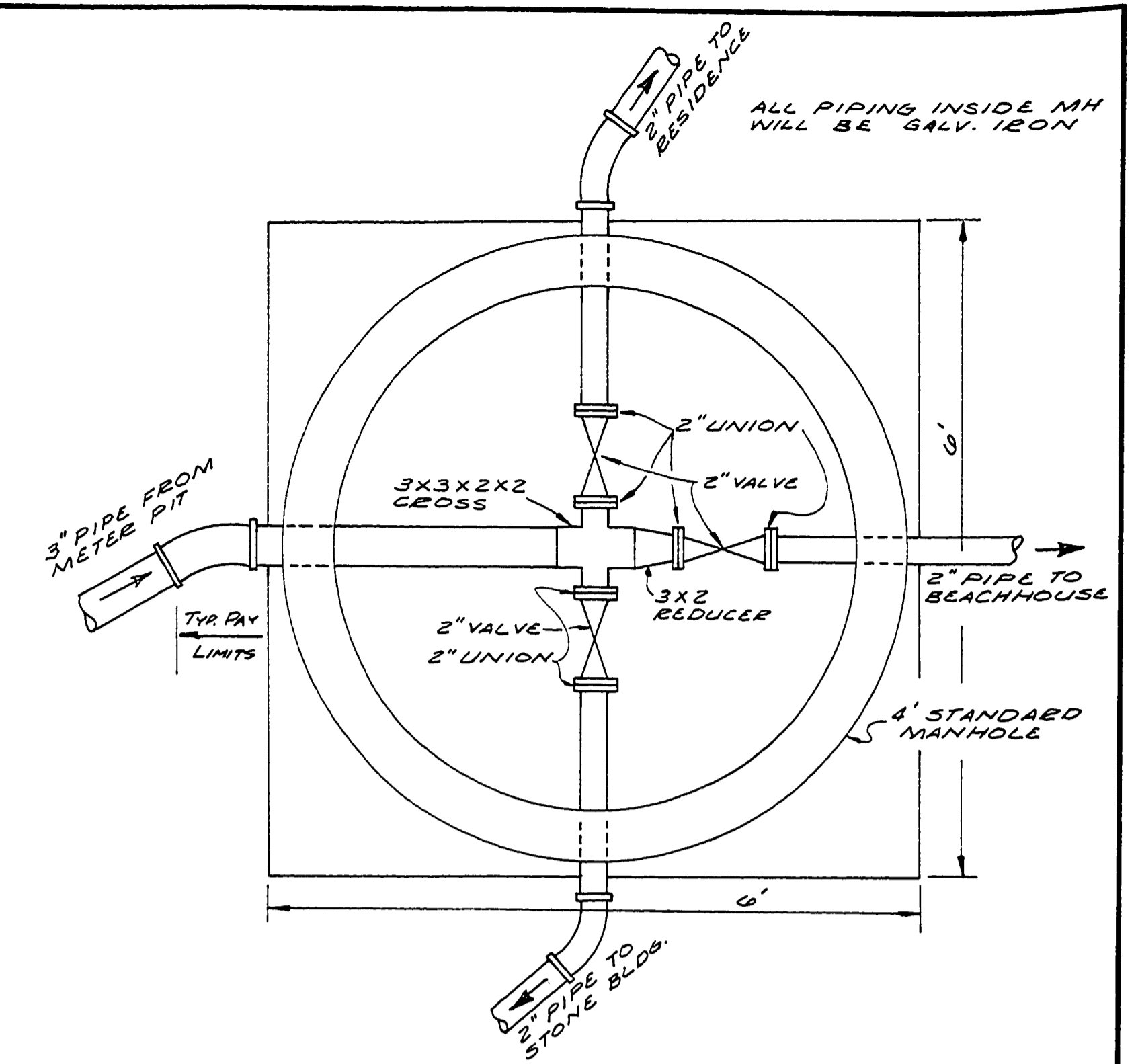


LOCATION MAP

# BEWABAC STATE PARK CONSTRUCTION PLANS FOR REPLACE DAY-USE WATER LINES PROJECT NO. 24-2712



SITE PLAN  
1"=100'



**NOTES**

1. CONTRACTOR WILL ENCOUNTER BOULDERS AND ROCK AT VARIOUS DEPTHS DURING TRENCHING
2. PROVIDE A MINIMUM COVER DEPTH OF 5 FEET
3. LOCATE UNDERGROUND UTILITIES BEFORE TRENCHING
4. CONNECTIONS
  - FOUNTAINS - CONNECT AT DRINKING FOUNTAIN SHUT-OFF VALVE
  - BUILDINGS - CONNECT TO EXIST LINE AT A POINT 5' OUTSIDE BUILDING LIMITS OR AS DIRECTED BY ENGR.
  - METER PIT - MAKE CONNECTION WITHIN PIT AS DIRECTED BY ENGR.

BUILDING COMMITTEE APPROVAL	
BY: _____	DATE: _____
RECOMMENDED FOR APPROVAL: <i>[Signature]</i> 5-2-86	ENGINEERING OR ARCHITECTURAL SUPERVISOR DATE
RECOMMENDED FOR APPROVAL: _____	PROPERTY AND PLAN COORDINATOR DATE
DIVISION/REGION APPROVAL	
BY: <i>[Signature]</i> 6-2-86	DATE
DIVISION CHIEF/REGIONAL MANAGER	
ENGINEERING DIVISION	
APPROVED: _____	CHIEF ENGINEER DATE

SURVEYED BY	DRAWN BY <b>BANDY</b>	5-86	NO. DATE BY	REVISIONS	NO. DATE BY	REVISIONS	MICHIGAN DEPARTMENT OF NATURAL RESOURCES	PLAN & DETAILS	BEWABAC STATE PARK AREA OR PARK	BUILDING COMMITTEE APPROVAL
DESIGNED BY	CHECKED BY		1. 5-87 H.T.R.	REVISED	3.			PROJECT NO. 24-2712	REPLACE DAY-USE WATER LINES PROJECT	RECOMMENDED FOR APPROVAL: <i>[Signature]</i> 5-2-86
DATE	DATE	DATE	2.		4.			SHEET 1 OF 1	PLAN NO. E-104	RECOMMENDED FOR APPROVAL: _____