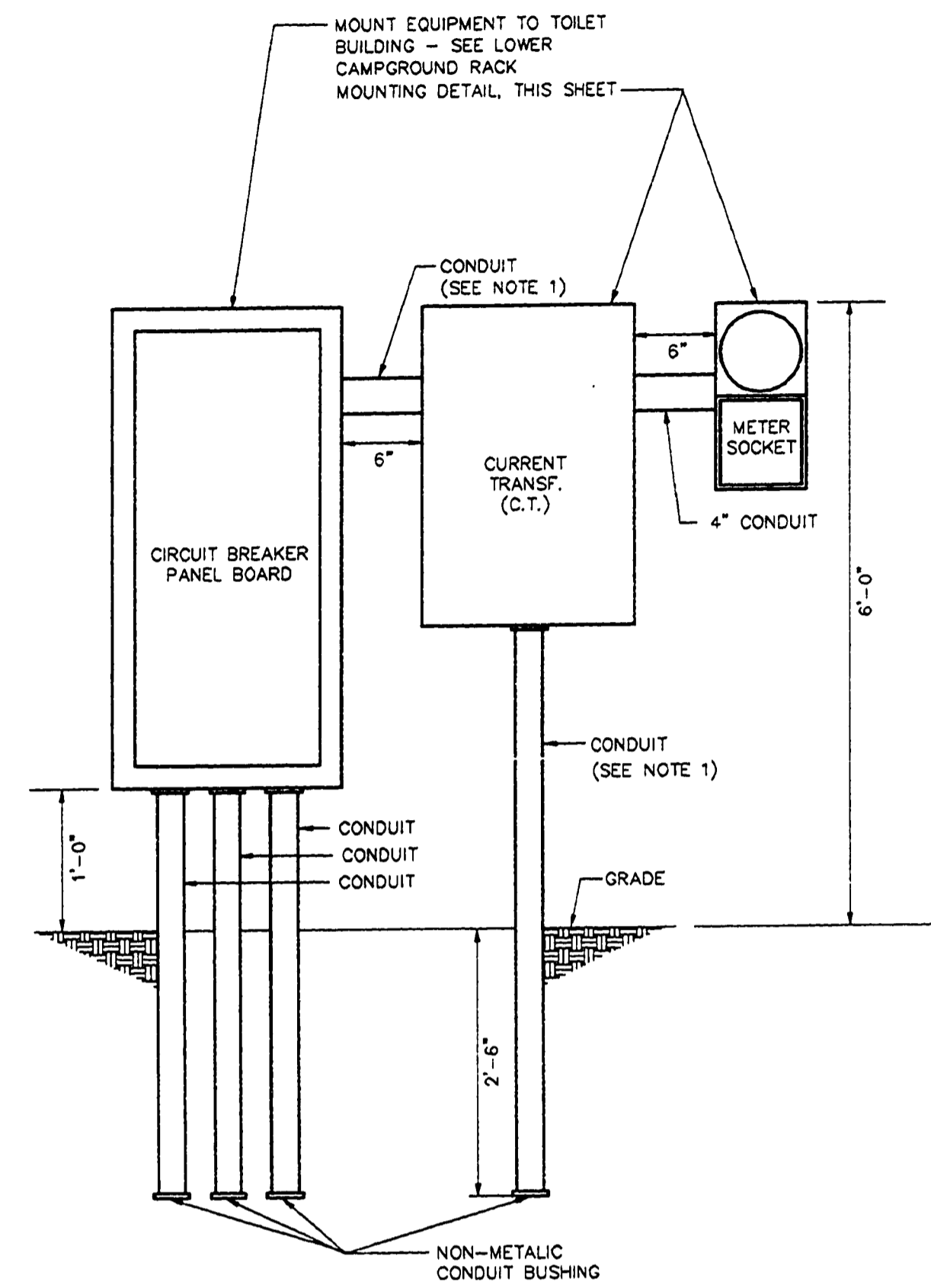


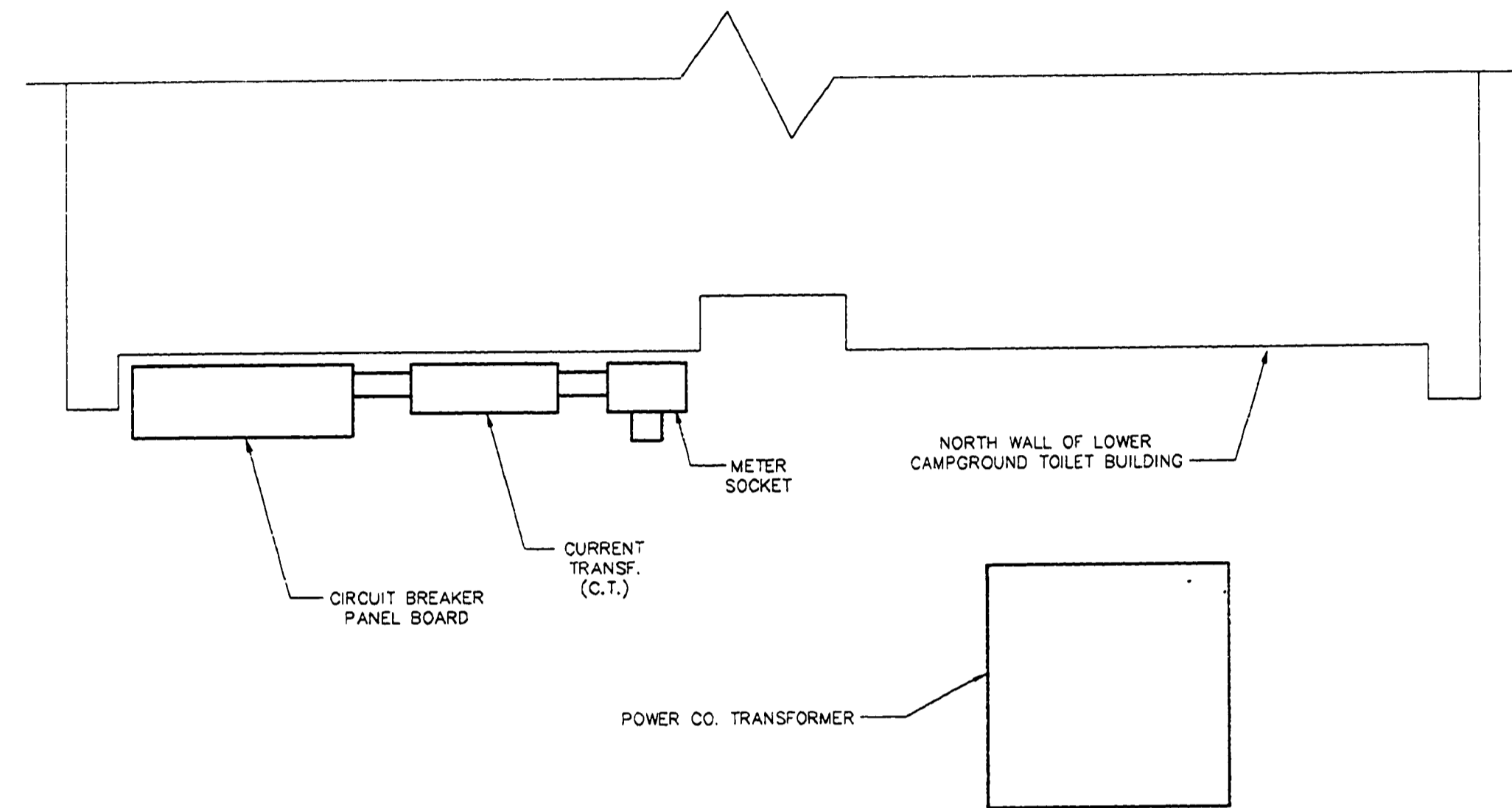
**NOTES:**

- SERVICE ENTRANCE CONDUCTORS FOR PANEL MDP-1 (LOWER CAMPGROUND) SHALL BE 3 SETS OF 3 #350 KCMIL WITH EACH SET IN 3" CONDUIT. INCLUDE 1 #2/0 GROUNDING ELECTRODE CONDUCTOR.
- SERVICE ENTRANCE CONDUCTORS FOR PANEL MDP-2 (UPPER CAMPGROUND) SHALL BE 2 SETS OF 3 #350 KCMIL WITH EACH SET IN 3" CONDUIT. INCLUDE 1 #2/0 GROUNDING ELECTRODE CONDUCTOR.
- MOVE BOX ALONG LINE PARALLEL TO AND 3' OFF CENTERLINE OF RECREATIONAL VEHICLE STAND AS REQUIRED TO AVOID TREES.



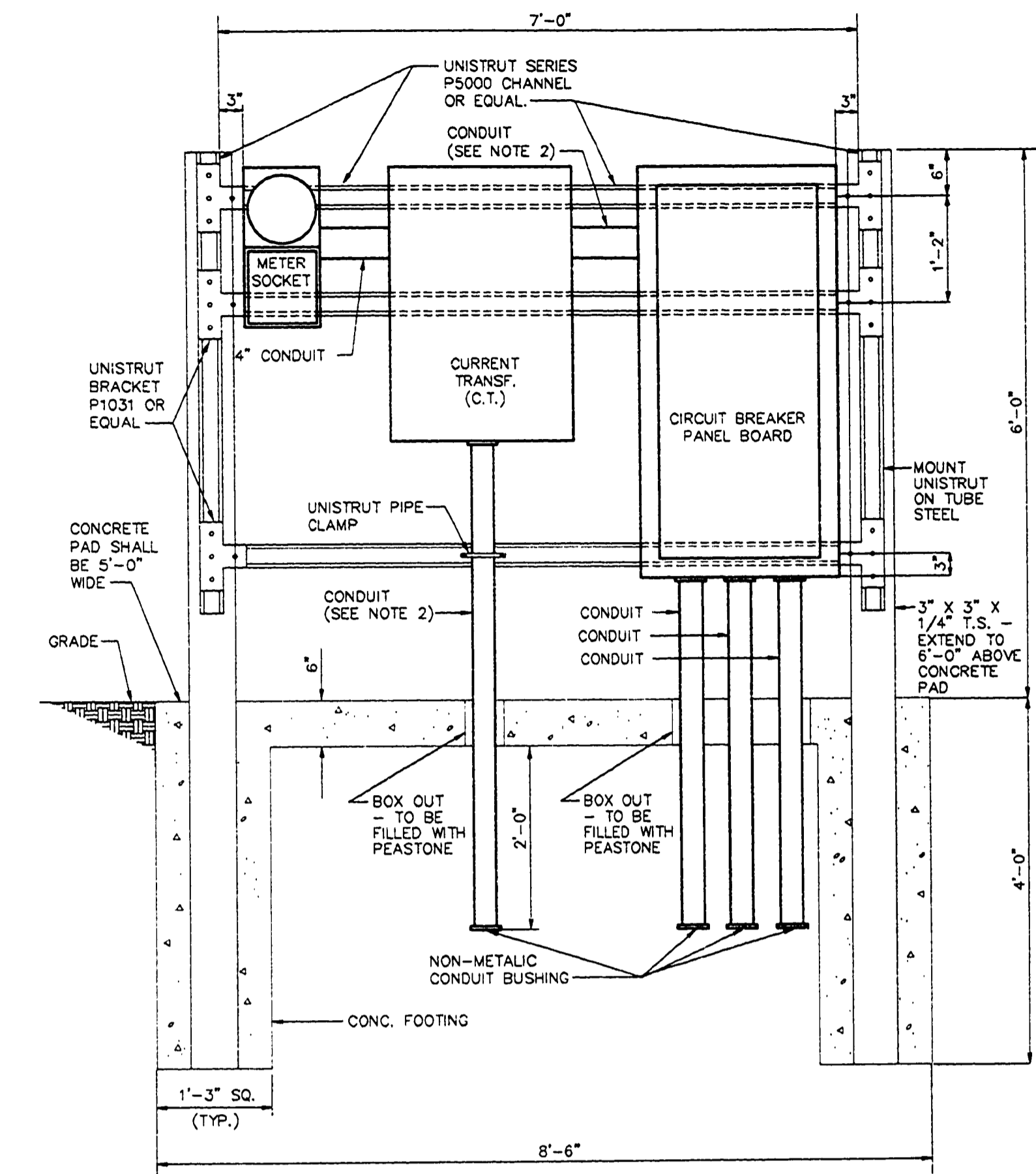
**LOWER CAMPGROUND ENTRANCE RACK DETAIL**

METER SOCKET, CURRENT TRANSF. (C.T.) & CIRCUIT BREAKER PANEL BOARD  
NO SCALE



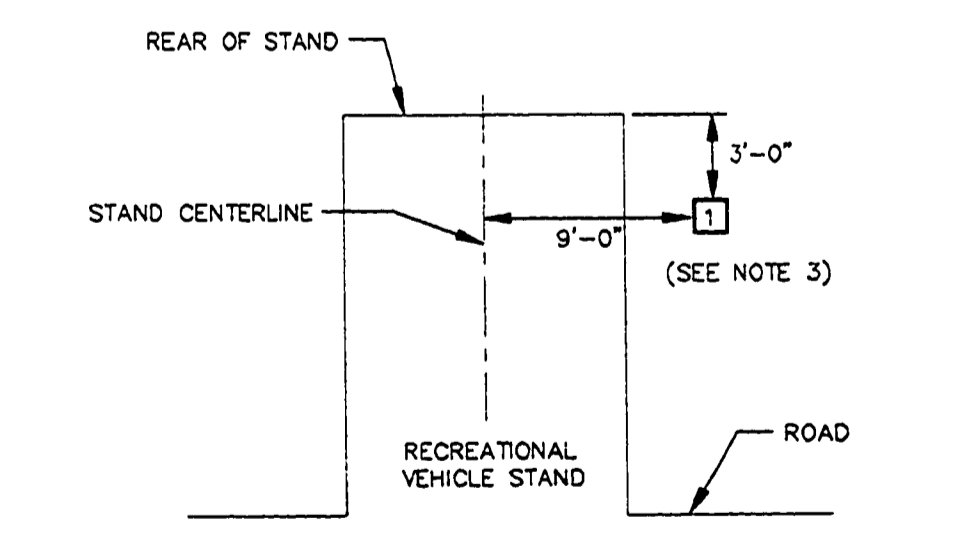
**LOWER CAMPGROUND RACK MOUNTING DETAIL**

NO SCALE



**UPPER CAMPGROUND ENTRANCE RACK DETAIL**

METER SOCKET, CURRENT TRANSF. (C.T.) & CIRCUIT BREAKER PANEL BOARD  
NO SCALE



**OUTLET BOX MOUNTING LOCATION DETAIL**

NO SCALE

**PANEL MDP-1 (LOWER CAMPGROUND)**

BRKR	DESCRIPTION	VOLTS - 120/240				PHASE - 1				MOUNTING - BUILDING
		CIRCUIT	PHASE	LOADS	CIRCUIT	PHASE	LOADS	DESCRIPTION		
80 2	BRANCH #1	9130	1	16,850	2	7720	BRANCH #6	80 2		
-	BRANCH #1	9130	3	16,850	4	7720	BRANCH #6	-		
90 2	BRANCH #2	8420	5	15,440	6	7020	BRANCH #7	80 2		
-	BRANCH #2	8420	7	15,440	8	7020	BRANCH #7	-		
90 2	BRANCH #3	8420	9	15,440	10	7020	BRANCH #8	80 2		
-	BRANCH #3	8420	11	15,440	12	7020	BRANCH #8	-		
80 2	BRANCH #4	6320	13	15,920	14	9600	TOILET BUILDING	100 2		
-	BRANCH #4	6320	15	15,920	16	9600	TOILET BUILDING	-		
80 2	BRANCH #5	7720	17	10,120	18	2400	LIFT STATION	30 2		
-	BRANCH #5	7720	19	10,120	20	2400	LIFT STATION	-		
	SPACE		21		22		SPACE			
	SPACE		23		24		SPACE			
	SPACE		25		26		SPACE			
	SPACE		27		28		SPACE			
	SPACE		29		30		SPACE			
1) SUITABLE FOR USE AS SERVICE EQUIPMENT		73,770	73,770	TOTAL LOADS - 147,540 VA						
2) 65,000 AIC				616 AMPS						

**PANEL MDP-2 (UPPER CAMPGROUND)**

BRKR	DESCRIPTION	VOLTS - 120/240				PHASE - 1				MOUNTING - RACK
		CIRCUIT	PHASE	LOADS	CIRCUIT	PHASE	LOADS	DESCRIPTION		
80 2	BRANCH #9	7720	1	14,040	2	6320	BRANCH #13	80 2		
-	BRANCH #9	7720	3	14,040	4	6320	BRANCH #13	-		
80 2	BRANCH #10	7020	5	14,040	6	7020	BRANCH #14	80 2		
-	BRANCH #10	7020	7	14,040	8	7020	BRANCH #14	-		
80 2	BRANCH #11	7720	9	17,320	10	9600	TOILET BUILDING	100 2		
-	BRANCH #11	7720	11	17,320	12	9600	TOILET BUILDING	-		
80 2	BRANCH #12	7720	13	7720	14		SPACE			
-	BRANCH #12	7720	15	7720	16		SPACE			
	SPACE		17		18		SPACE			
	SPACE		19		20		SPACE			
1) SUITABLE FOR USE AS SERVICE EQUIPMENT		53,120	53,120	TOTAL LOADS - 106,240 VA						
2) 65,000 AIC				445 AMPS						

L-127

10-16-91  
1109EL2