

**LAND CORNER RECORDATION CERTIFICATE**  
**Filing Requirement of Act 74, Mich. P.A. 1970**

For corners in  
Alger  
(County)

Located In:

Corner Code ##

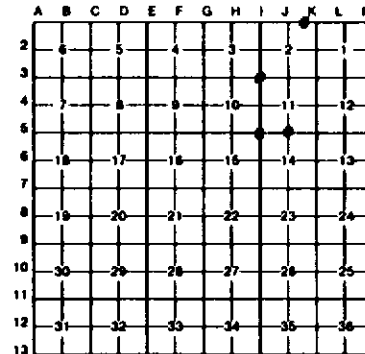
1. Public Land Survey	T <u>44N</u> R <u>21W</u>	<u>I3</u>
	T <u>    </u> R <u>    </u>	<u>I5</u>
	T <u>    </u> R <u>    </u>	<u>J5</u>
	T <u>    </u> R <u>    </u>	
2. Property Controlling In Section	S <u>2</u> T <u>    </u> R <u>    </u>	<u>2</u>
	S <u>    </u> T <u>    </u> R <u>    </u>	
3. Miscellaneous Property in Sec.	S <u>    </u> T <u>    </u> R <u>    </u>	

Register of Deeds Stamp & File Number

4. Lot No.                     , Recorded Plat                       
5. Private Claims                     

I, Keith Sackett, in a field survey on May 13, 1991, do hereby certify that under requirements of P.A. 74, Michigan P.A. of 1970, the corner points mentioned in lines 1 and 2 above were in conformance with regulations and rules therefore as required in the current manual of survey instructions of the United States Department of the Interior, Bureau of Land Management or by a decree of a Court of Law and/or that the corner points mentioned in lines 3, 4 and 5 above were in conformance with the rules of the Michigan Board of Land Surveyors or by a Decree of a Court of Law; established, re-established, monumented, re-monumented, recovered, found as expressed below:

NOTE: Not more than 4 corners, all in the same town and range, may be recorded on this certificate.



A. Description of original monument and accessories and/or subsequent restoration:

<u>I3</u>	<u>I5</u>	<u>J5</u>	<u>2</u>
Original monument and accessories not found.	Original monument and accessories not found. Found old pasture fence corner.	Quarter corner common to Sections 11 and 14. Original monument and accessories not found.	East one-sixteenth corner common to Sections 2 and 35. Not set on original survey nor subsequently, apparently.

B. Description of corner evidence found and/or method applied in restoring or reestablishing corner:

<u>I3</u>	<u>I5</u>	<u>J5</u>	<u>2</u>
Restored by double proportion.	Restored by double proportion. This position fits very good with land calls to river and creek.	Restored midway and on line.	Established midway and on line.

C. Description of monument for corner and accessories established to perpetuate locating the position of the corner:

<u>I3</u>	<u>I5</u>	<u>J5</u>	<u>2</u>
DNR. 14" cedar N75E 16.9' NBT 10" cedar S23E 17.0' NBT 4" cedar S36W 15.2' NBT 7" cedar N46W 10.9' NBT	DNR. 5" sugar maple N13E 37.35' NBT 6" apple S05E 23.7' NBT 8" sugar maple S61W 39.4' NBT 5" yellow birch N05W 36.3' NBT	DNR. 4" sugar maple N63E 19.65' NBT 6" sugar maple S38E 29.55' NBT 8" sugar maple S24W 19.3' NBT 5" sugar maple N30W 24.75' NBT	DNR monument in stone mound. 5" basswood N28E 19.65' BT 4" sugar maple N77W 82.4' BT 4" basswood N59W 85.4' BT Steel fence post South 0.5'

Signed by

*Keith Sackett*

Date

Surveyor's Michigan License No.

19006

