

MICHIGAN
DEPARTMENT OF CONSERVATION
FORESTRY DIVISION

LAND CORNER RECORD

T. 46 N.R. 17 W

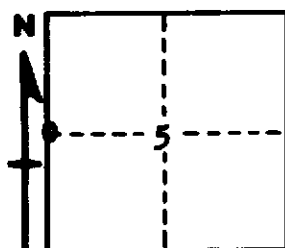
Alger COUNTY

DESCRIPTION OF CORNER 1/4 corner between Sections 5 and 6

CORNER MONUMENT Monument Box in Blacktop Road

DATE ~~RECORDED~~ WITNESSED 8/26/60

WITNESSES TO CORNER.....



AND

CIRCLE CORNER REGISTERED

DESCRIPTION IN DETAIL AS TO HOW CORNER WAS LOCATED AND IDENTIFIED OR RESTORED.

This corner was placed by Michigan State Highway Department. Corner lies $1\frac{1}{2}$ Links west of Centerline of M-94 at Junction of E-W Roads.

SURVEYOR'S SEAL

SIGNED Billy D. Buckler DATE 2/23/61
REGISTERED LAND SURVEYOR
Billy D. Buckler