

ALLEGAN COUNTY REMONUMENTATION  
LAND CORNER RECORDATION CERTIFICATE  
Filing Requirement of Act 74, Mich. P.A. 1970

For corners in

Allegan  
(County)

Located In: Cheshire  
(Township)

Corner Code #1-12/13(Seq.#7)

FILED

1/28/1999 2:44:39 PM

JOYCE A. WATTS  
REGISTER OF DEEDS  
ALLEGAN COUNTY, MICH

Register of Deeds Stamp & File  
Number

1. Public Land Survey T 1N R 14W  
T R  
T R  
T R
2. Property Controlling S 35 T 1N R 14W  
in Section S T R
3. Miscellaneous S T R  
Property in Sec. S T R
4. Lot No. , Recorded Plat
5. Private Claims

I, Robert E. Lemke, surveyor, in a field survey on April 20, <sup>1998</sup>~~1997~~ do hereby state that under requirements of P.A. 74, Michigan P.A. of 1970, the corner points mentioned in lines 1 and 2 above were in conformance with regulations and rules therefore as required in the current manual of survey instructions of the United States Department of the Interior, Bureau of Land Management or by a decree of a Court of Law and/or that the corner points mentioned in lines 3, 4 and 5 above were in conformance with the rules of the Michigan Board of Land Surveyors or by a Decree of a Court of Law; established, re-established, monumented, recovered, found as expressed below:

NOTE: Not more than 2 corners, all in the same town and range, may be recorded on this certificate.

	A	B	C	D	E	F	G	H	I	J	K	L	M
1													
2	6			5			4		3		2		1
3													
4	7			8			9		10		11		12
5													
6	18			17			16		15		14		13
7													
8	19			20			21		22		23		24
9													
10	30			29			28		27		26		25
11													
12	31			32			33		34		35		36
13													

A. Description of original monument and accessories and/or subsequent restoration:

Corner not set by G.L.O., this is an Allegan county witness monument.

(See back of sheet)

B. Description of corner evidence found and/or method applied in restoring or reestablishing corner:

(See back of sheet)

APPROVED REMONUMENTATION CORNER

P.A. 345 OF 1990

ALLEGAN COUNTY

DATE APPROVED JUNE 9, 1998

COUNTY REP. [Signature]

C. Description of monument for corner and accessories established to perpetuate locating the position of the corner:

Sequence Corner #7 (See Map on back).

Set standard Allegan County monument ( 3/4" x 24" steel rod w/red cap #23520)

Nail w/tag in NW side of power pole 1.0' above grade, N03°E, 24.91'

Nail w/tag in NE side of 6" Cottonwood 4.0' above grade, S54°E, 30.29'

Nail w/tag in E side of 6" Cherry 3.6' above grade, S09°E, 24.95'

Nail w/tag in W side of 8" Cherry 1.9' above grade, N80°W, 47.38'

Sequence corner is on West line of Section 35, T1N,R14W, in centerline of Mary Rd. 1000'± E. of intersection of 40<sup>th</sup> St. and Mary Rd.

Sequence corner is 1615.15' Northerly from I-13

Signed by

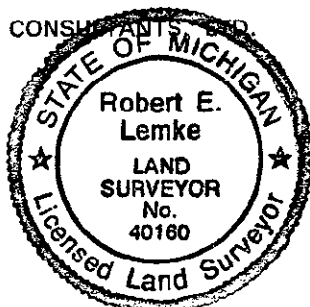
Robert E. Lemke

Date

6/9/98

For: SDI CONSULTANTS, P.C.

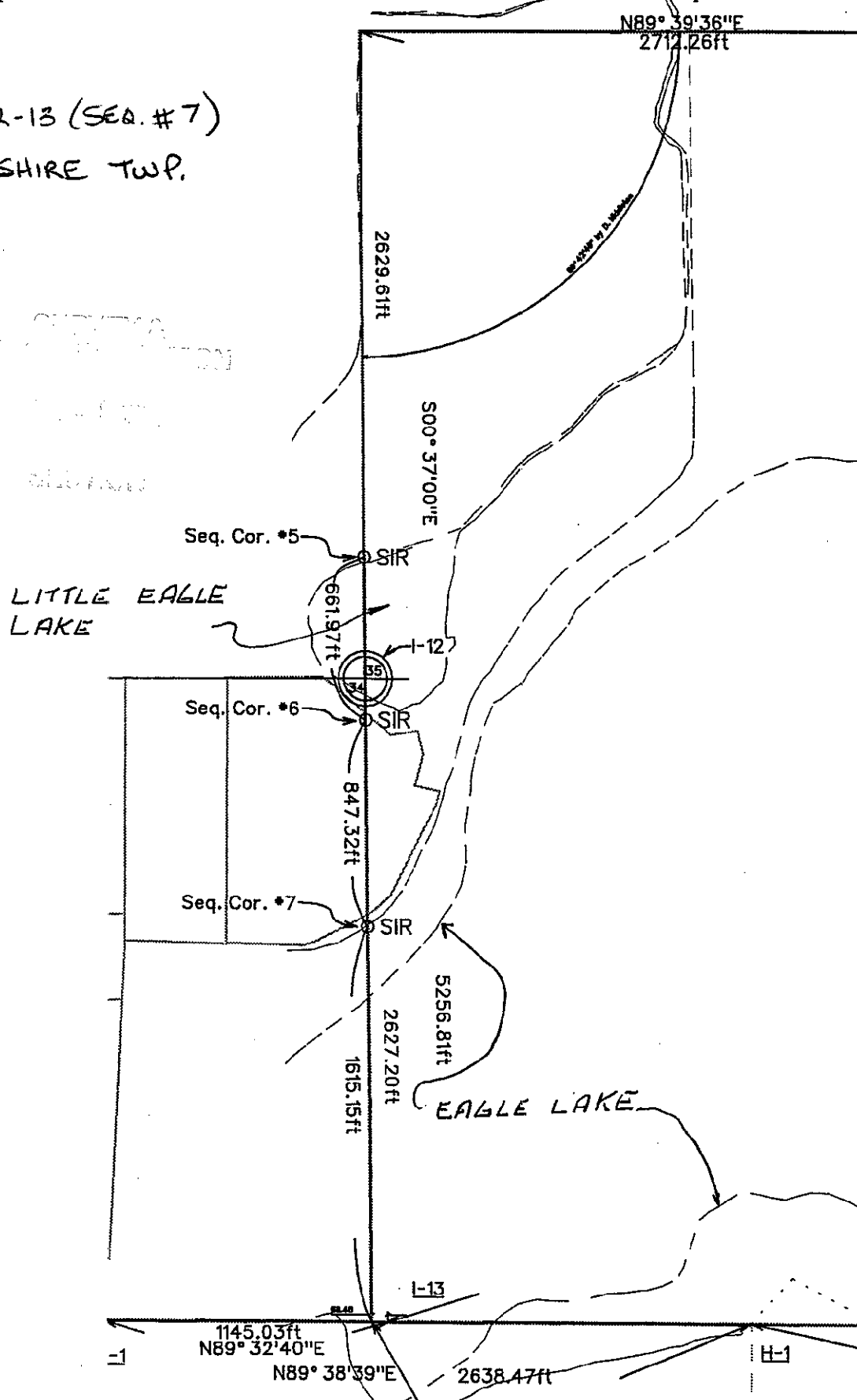
Surveyor's Michigan License No. 40160



Sheet 1 of 2

- A. I-12 GLO  
April, 1831 Calvin Britain, D.S.  
"Quarter section cor. in lake"
- County Surveyor Notes  
Feb. 16, 1880  
"At W 1/4 fd. cor. by stakes  
set by Hicks in survey  
Sec. 34, A. Gardner, Co. Sur."
- Survey Card  
Shows I-12 on line & between  
I-11 and I-13,  
2629.61 from I-11 to I-12  
2629.61 from I-12 to I-13
- B. No evidence of corner was found. 1880 notes by Gardner state that I-12 was on a straight line between I-11 & I-13. The position of I-12 is calculated to be on a straight line between I-11 & I-13. The distance of 2629.61 from I-11 to I-12 as shown on the survey card was held. This position not established by original government surveyors. This calculated position is accepted as the best available evidence of the position of the corner.

I 12-13 (SEQ. #7)  
CHESHIRE TWP.



LIBR0006 PAGE350