

MAR 07 2000

ALLEGAN COUNTY REMONUMENTATION
LAND CORNER RECORDATION CERTIFICATE
Filing Requirement of Act 74, Mich. P.A. 1970

00 FEB -1 AM 8:30

SECTION

For corners in
Allegan

(County)

Located In:

Corner Code #

1. Public Land Survey TIN R16W AB-1, Casco Twp. ✓
T R Sequence No. 1
T R
T R
T R
2. Property Controlling S T R AB-13, Ganges Twp.
in Section S T R Sequence No. 1
S T R
3. Miscellaneous S T R South line, Section
Property in Sec. S T R 31, Ganges Twp.

4. Lot No. _____, Recorded Plat _____
5. Private Claims _____

I, Steve Lampen, in a field survey on December 13, 1999, do hereby certify that under requirements of P.A. 74, Michigan P.A. of 1970, the corner points mentioned in lines 1 and 2 above were in conformance with regulations and rules therefore as required in the current manual of survey instructions of the United States Department of the Interior, Bureau of Land Management or by a decree of a Court of Law and/or that the corner points mentioned in lines 3, 4 and 5 above were in conformance with the rules of the Michigan Board of Land Surveyors or by a Decree of a Court of Law; established, re-established, monumented, re-monumented, recovered, found as expressed below:

NOTE: Not more than 4 corners, all in the same town and range, may be recorded on this certificate.

A. Description of original monument and accessories and/or subsequent restoration:

GLO -
1831 L. Lyon 75.00 to margin of Lake Michigan
and set post
Blue Beech 2 S 34 E 26
Hardhack 4 N 61 E 109

1960 - Don E. Allen
Glenn Shores No. 1
Liber 8 of Plats, Page 7

1972 - Donald A. Ratekin
Maes Sylvan Shores
Liber 11 of Plats, Pages 57 through 60, inclusive

B. Description of corner evidence found and/or method applied in restoring or reestablishing corner:

Set an Allegan County Remonumentation iron and cap at the Southeast corner of Lot 1, of Maes Sylvan Shores

See sketch on reverse side

Accepted the iron as a careful and faithful perpetuation of the position of the original South line of Section 31

Approved by the Allegan County Remonumentation Peer Group on December 14, 1999

APPROVED REMONUMENTATION CORNER

P.A. 345 OF 1990

ALLEGAN COUNTY

DATE APPROVED DEC-14 1999

COUNTY REP. *[Signature]*

C. Description of monument for corner and accessories established to perpetuate locating the position of the corner:

AB-1, Casco Twp., Sequence No. 1
AB-13, Ganges Twp., Sequence No. 1
Allegan County Remonumentation iron and cap at the Southeast corner of Lot 1, Maes Sylvan Shores
Azimuth = Maes Sylvan Shores
Remonumentation tag in East side Power Pole 192° 13' 16.06
NE corner house, wood siding 101° 14' 57.50
SE corner house, wood siding 282° 35' 87.05
NE corner house, wood siding 325° 28' 96.33

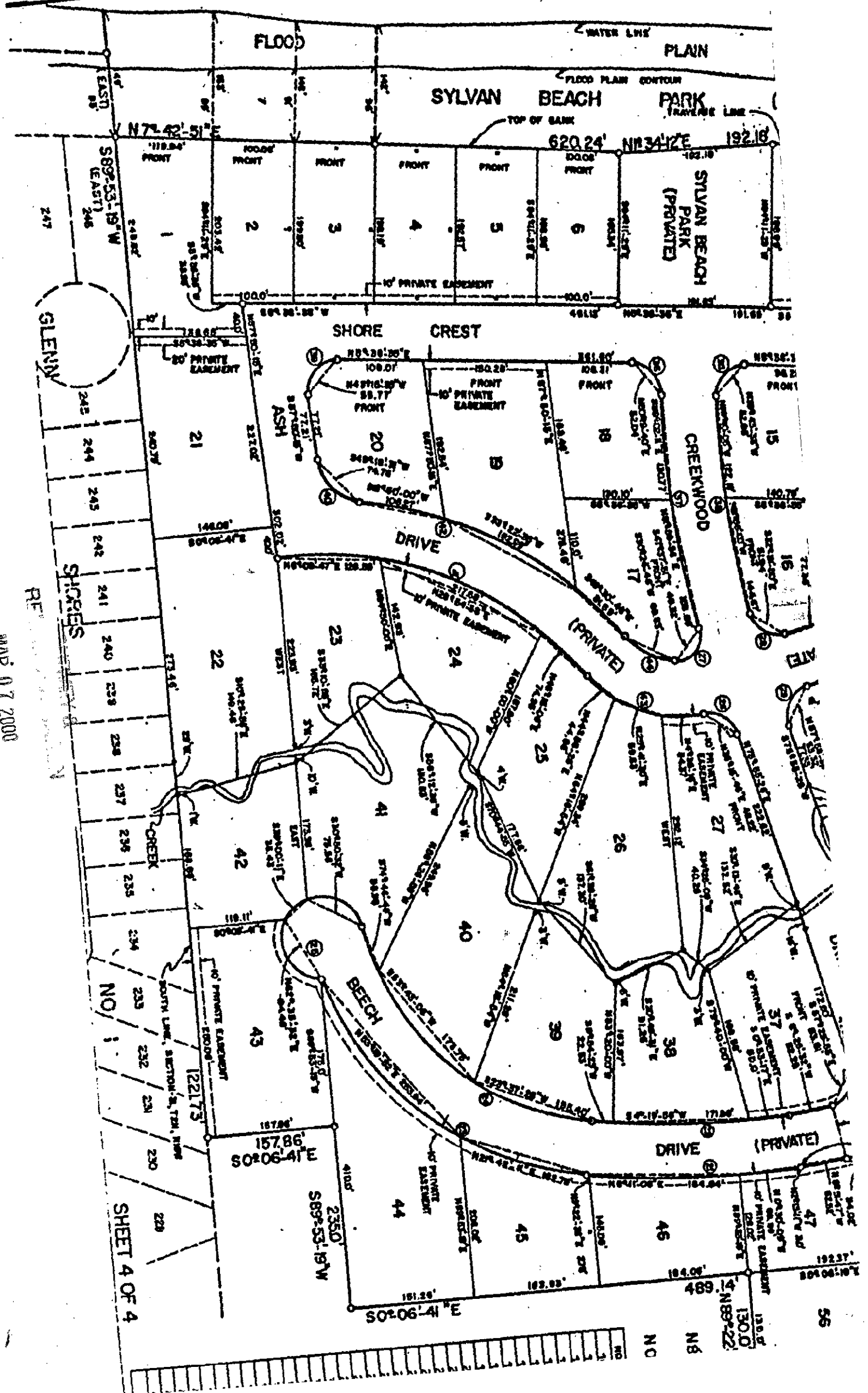
1	A	B	C	D	E	F	G	H	I	J	K	L	M
2	6	5	4	3	2	1							
3													
4	7	8	9	10	11	12							
5													
6	18	17	16	15	14	13							
7													
8	19	20	21	22	23	24							
9													
10	30	29	28	27	26	25							
11													
12	31	32	33	34	35	36							
13													

Signed by *Steven Lampen*

Date DECEMBER 31, 1999

Surveyor's Michigan License No. 37279

LAKE



199007 PAGE 57

SECTION

MAR 07 2000

SHEET 4 OF 4