

ALLEGAN COUNTY REMONUMENTATION  
LAND CORNER RECORDATION CERTIFICATE  
Filing Requirement of Act 74, Mich. P.A. 1970

For corners in

Allegan  
(County)

Located In:

Corner Code #

FILED

1/28/1999 2:44:39 PM

JOYCE A. WATTS  
REGISTER OF DEEDS  
ALLEGAN COUNTY, MICH

LIBER 006 PAGE 03

1. Public Land Survey

T\_\_\_ R\_\_\_ CD-5  
T\_\_\_ R\_\_\_ Heath Twp. (Seq. #10)  
T\_\_\_ R\_\_\_  
T\_\_\_ R\_\_\_

2. Property Controlling  
in Section

S 8 T3N R14W Heath Twp.  
S 17 T3N R14W Heath Twp.

3. Miscellaneous  
Property in Sec.

S\_\_\_ T\_\_\_ R\_\_\_  
S\_\_\_ T\_\_\_ R\_\_\_

Register of Deeds Stamp & File Number

4. Lot No. \_\_\_\_\_, Recorded Plat \_\_\_\_\_  
5. Private Claims \_\_\_\_\_

I, Kirk L. Van Order, in a field survey on Nov. 24, 1998 do hereby state that under requirements of P.A. 74, Michigan P.A. of 1970, the corner points mentioned in lines 1 and 2 above were in conformance with regulations and rules therefore as required in the current manual of survey instructions of the United States Department of the Interior, Bureau of Land Management or by a decree of a Court of Law and/or that the corner points mentioned in lines 3, 4 and 5 above were in conformance with the rules of the Michigan Board of Land Surveyors or by a Decree of a Court of Law; established, re-established, monumented, recovered, found as expressed below:

NOTE: Not more than 2 corners, all in the same town and range, may be recorded on this certificate.

	A	B	C	D	E	F	G	H	I	J	K	L	M
1													
2	6		5		4		3		2		1		
3													
4	7		8		9		10		11		12		
5													
6	18		17		16		15		14		13		
7													
8	19		20		21		22		23		24		
9													
10	30		29		28		27		26		25		
11													
12	31		32		33		34		35		36		
13													

A. Description of original monument and accessories and/or subsequent restoration:

CD-5

CD-5 Not set by GLO

D-5 GLO

(1) GLO

West correct line between Sections 8 & 17  
39.89 chains set quarter post  
W. oak 12" dia. S89°W 40 links  
No other tree near or convenient (continued on back of sheet)

APPROVED REMONUMENTATION CORNER  
P.A. 345 OF 1990  
ALLEGAN COUNTY

DATE APPROVED Nov. 24, 1998  
COUNTY REP. [Signature]

B. Description of corner evidence found and/or method applied in restoring or reestablishing corner:

CD-5

Set remon. reference point (3/4" x 36" steel rod w/yellow plastic cap) on  
West side of Purdy Lake

Computed position D-5 AZ 91°03'47" 347.06'

C-5 AZ 271°03'47" 2284.81'

D-5 position falls in Purdy Lake

This position not established by original government surveyors. This monument is accepted as the best available evidence of the position of the corner.

Peer group approved Nov. 24, 1998.

Traversed distance = 2042.58 feet on road. Traversed distance = 589.29 feet off road.

C. Description of monument for corner and accessories established to perpetuate locating the position of the corner:

CD-5

Set remon. reference point (3/4" x 36" steel rod w/yellow cap) on West side  
of Purdy Lake

Nail & Remon. tag in NW side power pole AZ 25°34' 256.56'

Nail & Remon. tag in S side 39" cottonwood AZ 43°39' 137.08'

Nail & Remon. tag in SE side 11" mulberry AZ 05°09' 41.46'

Nail & Remon. tag in NW side power pole AZ 01°16' 32.89'

Water's edge of Purdy Lake AZ 91°03'47" 68'+/-

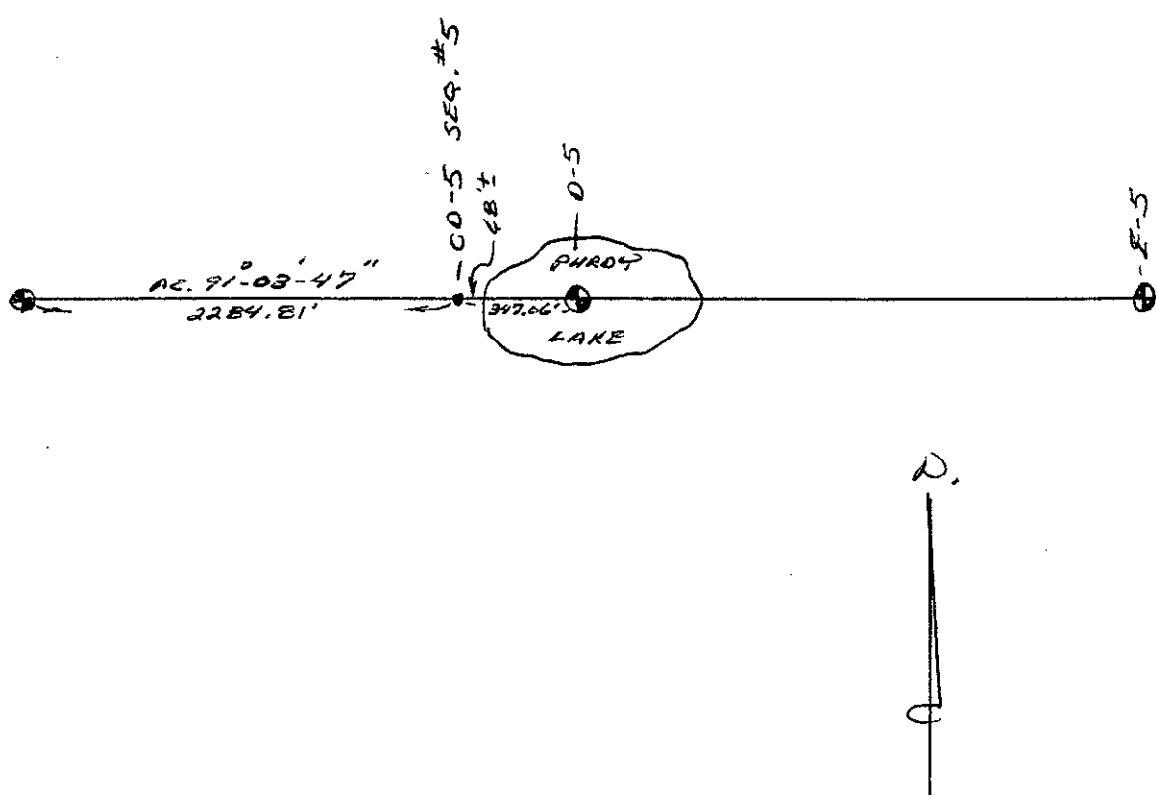
Signed by

Surveyor's Michigan License No. 23520

Date 1-13-1999



CD-5 (SEQ. # 10)  
HEATH TWP.



Section A (continued from Page 1)  
CD-5  
Heath Twp., T.3N., R.14W.

- (2) D.A. Ratekin section card info.  
SW corner Sec. 8      W      2631.80'  
SE corner Sec. 8      E      2631.80'  
Angle at S 1/4 cor. Sec. 8 to the South = 179°51'05"  
Indicates corner not set or found
- (3) Kirk L. Van Order survey dated Apr. 12, 1982  
S 1/4 corner in Purdy Lake  
SW corner Section 8    N89°08'35"W      2631.98'
- (4) Kirk L. Van Order survey dated May 14, 1986  
Corner not set in Purdy Lake  
SE corner Sec. 8      S89°08'35"E      2631.98'  
SW corner Sec. 8      N89°08'35"W      2631.98'