

APR 29 1999

SECTION

ALLEGAN COUNTY REMONUMENTATION
LAND CORNER RECORDATION CERTIFICATE
Filing Requirement of Act 74, Mich. P.A. 1970

For corners in

Allegan

(County)

Located in:

Corner Code #

1. Public Land Survey

T R
T R
T R
T R

E 1-2

Heath Twp. (Seq. #14)

2. Property Controlling
in Section

S 4 T 3N R 14W

3. Miscellaneous
Property in Sec.S 5 T 3N R 14W
S T R
S T R

FILED

1/28/1999 2:44:39 PM

JOYCE A. WATTS
REGISTER OF DEEDS
ALLEGAN COUNTY, MICH

Register of Deeds Stamp & File Number

4. Lot No. _____, Recorded Plat _____

5. Private Claims _____

I, Kirk L. Van Order, in a field survey on Dec. 23, 1998 do hereby state that under requirements of P.A. 74, Michigan P.A. of 1970, the corner points mentioned in lines 1 and 2 above were in conformance with regulations and rules therefore as required in the current manual of survey instructions of the United States Department of the Interior, Bureau of Land Management or by a decree of a Court of Law and/or that the corner points mentioned in lines 3, 4 and 5 above were in conformance with the rules of the Michigan Board of Land Surveyors or by a Decree of a Court of Law; established, re-established, monumented, recovered, found as expressed below:

NOTE: Not more than 2 corners, all in the same town and range, may be recorded on this certificate.

A. Description of original monument and accessories and/or subsequent restoration:

E-1 In Rabbit River

B. Description of corner evidence found and/or method applied in restoring or reestablishing corner:

Set standard Allegan Co. reference monument on line between computed position E-1 and E-2, being S.01°-05'-58"W. 75.86' from E-1 and N.01°05'58"E. 2786.42' from E-2

This position not established by original government surveyors. This monument is accepted as the best available evidence of the position of the corner.

Peer group approved Dec. 22, 1998.

APPROVED REMONUMENTATION CORNER

P.A. 345 OF 1990

ALLEGAN COUNTY

DATE APPROVED DEC. 22, 1998COUNTY REP. Kirk L. Van Order

C. Description of monument for corner and accessories established to perpetuate locating the position of the corner:

Set standard Allegan Co. Remon. reference monument (3/4" x 24" steel rod w/yellow cap #23520)

Nail & Remon. tag in NW side 24" w. pine

AZ 68°34'

18.89'

Nail & Remon. tag in SW side 18" maple

AZ 119°08'

13.66'

Nail & Remon. tag in W side 12" maple

AZ 199°46'

12.13'

Nail & Remon. tag in W side 15" hemlock

AZ 338°-13'

6.60'

South water's edge of Rabbit River

AZ 01°05'58'

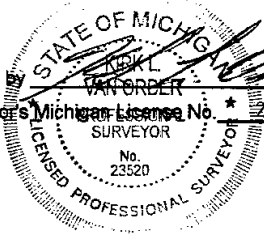
46'+/-

Signed by

Surveyor's Michigan License No. 23520

Date

1-13-1999



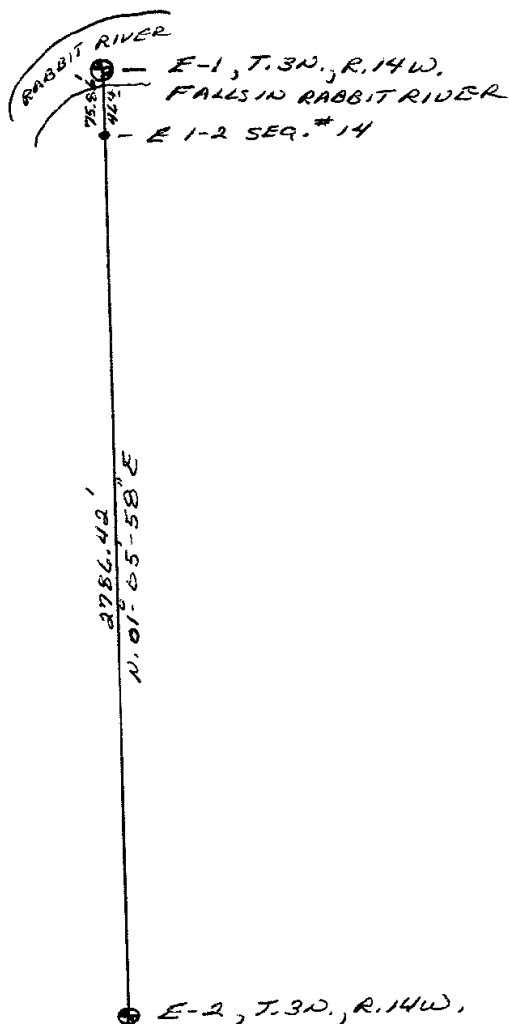
SURVEY
REMONUMENTATION

APR 29 1900

SECTION

E 1-2 (Seq. # 14)

LIBERO 006 PAGE 16



2.