

COPY

ALLEGAN COUNTY REMONUMENTATION
LAND CORNER RECORDATION CERTIFICATE
Filing Requirement of Act 74, Mich. P.A. 1970

For corners in

Allegan Located in: Corner Code # other #1
(County)
1. Public Land Survey T R EF-1
T R Heath Twp. (Seq. #1)
T R * EF-13
T R Overisel Twp. (Seq. #1)
2. Property Controlling S 4 T 3 NR 14 W Heath Twp.
in Section S 33 T 4 NR 14 W Overisel Twp.
3. Miscellaneous S T R
Property in Sec. S T R

97 JUN 22 PM 1:23
ALLEGAN COUNTY
REGISTERED

FILED

Register of Deeds Stamp & File Number

4. Lot No. _____, Recorded Plat _____
5. Private Claims _____

I, Kirk L. Van Order, in a field survey on Nov. 11, 1996 do hereby state that under requirements of P.A. 74, Michigan P.A. of 1970, the corner points mentioned in lines 1 and 2 above were in conformance with regulations and rules therefore as required in the current manual of survey instructions of the United States Department of the Interior, Bureau of Land Management or by a decree of a Court of Law and/or that the corner points mentioned in lines 3, 4 and 5 above were in conformance with the rules of the Michigan Board of Land Surveyors or by a Decree of a Court of Law, established, re-established, monumented, recovered, found as expressed below:

NOTE: Not more than 2 corners, all in the same town and range, may be recorded on this certificate.

	A	B	C	D	E	F	G	H	I	J	K	L	M
1													
2	6	5	4	3	2	1							
3													
4	7	8	9	10	11	12							
5													
6	16	17	18	19	20	21	22	23	24				
7													
8	19	20	21	22	23	24							
9													
10	30	29	28	27	26	25							
11													
12	31	32	33	34	35	36							
13													

A. Description of original monument and accessories and/or subsequent restoration:

APPROVED REMONUMENTATION CORNER
P.A. 345 OF 1990
ALLEGAN COUNTY
DATE APPROVED 11-26-96
COUNTY REP. Kirk L. Van Order

B. Description of corner evidence found and/or method applied in restoring or reestablishing corner:

Set standard Allegan County witness monument on North & South lines of Section 4, T.3N., R.14W. and Section 33, T.4N., R.14W. respectively on higher lowland on West side of swamp being
AZ 271°14'02" 1242.66 feet from computed position F-13 and
AZ 271°14'02" 1306.645 feet from computed position F-1.

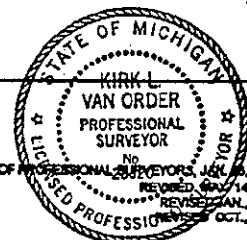
This position not established by original government surveys. This monument is accepted as the best available evidence of the position of the corner.

Group approved Nov. 26, 1996. (See back of sheet)
C. Description of monument for corner and accessories established to perpetuate locating the position of the corner:

Set standard Allegan County witness monument (3/4" x 36" steel rod w/yellow cap #23520)
Nail & Remon. tag in W side 23" Ash AZ 180° 21.22'
Nail & Remon. tag in SW side 16" Red Oak AZ 300° 28.40'
Nail & Remon. tag in E side 7" Musselwood AZ 00° 11.00'
Nail & Remon. tag in SE side 10" Ash AZ 60° 19.25'
Old page wire fence running East & West AZ 00° 21' +/-

Signed by Kirk L. Van Order
Surveyor's Michigan License No. 23520

Date 12-31-96

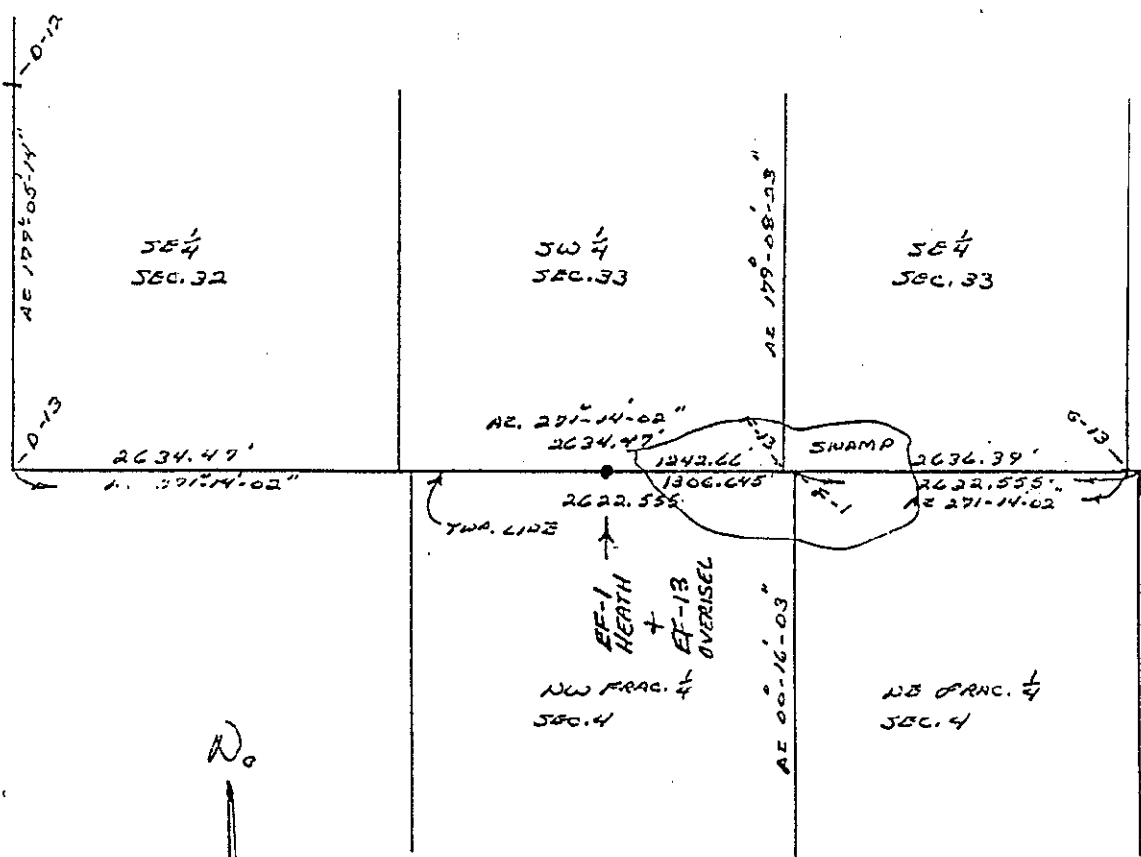


USE 0005 PAGE 399

FORM APPROVED BY MICHIGAN STATE BOARD OF PROFESSIONAL SURVEYORS, JAN. 25, 1971
REVISED MAY 14, 1975
REVISED JAN. 1983
REVISED OCT., 1990

EF-1
COMPL...

* EF-1 HEATH TWP.
EF-13 OVERISEL TWP.



Traversed distance 2622.555' off road.