

LAND CORNER RECORDATION CERTIFICATE

Filing Requirement of Act 74, Mich. PA 1970

For Corners In:

Alpena

(County)

Located In

Corner Code #

1. Public Land Survey	T	30N	R	6E	E-5
	T	30N	R	6E	E-8
2. Property Controlling in Section	S	T	R		
	S	T	R		
3. Miscellaneous Property in Section	S	T	R		
	S	T	R		

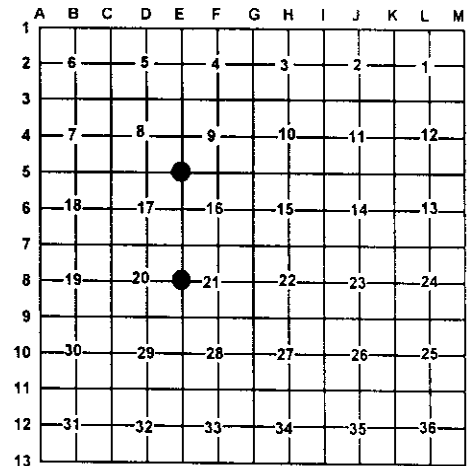
4. Lot No: _____ Recorded Plat: _____

5. Private Claims: _____

I, Carl T. Kiiskila, in a field survey on November 7, 2001 do hereby state that under requirements of PA 74, Michigan PA of 1970, the corner points mentioned in lines 1 and 2 above were in conformance with regulations and rules therefore as required in the current manual of survey instructions of the United States Department of the Interior, Bureau of Land Management or by a decree of a Court of Law and/or that the corner points mentioned in lines 3, 4 and 5 above were in conformance with the rules of the Michigan Board of Land Surveyors or by a Decree of a Court of Law, established, re-established, monumented, recovered, found as expressed below:

NOTE: Not more than 2 corners, all in the same town and range, may be recorded on this certificate.

Register of Deeds Stamp & File Number



A. Description of original monument and accessories and/or subsequent restoration:

E-5 G.L.O. Lewis Clason D.S. -1840
Set post corner section 8,9,16, and 17
Wit: Spruce 10" S18°W 20
Cedar 12" N51°E 18

E-8 G.L.O. Lewis Clason D.S. -1840
Set quarter section Post
Wit: Birch 6 N45°E 47 links
Birch 10 S41°W 62 links

Thomas L. Fabis P.S. #31391 July 1995. Set a large nail in the center of old E-W road bed and on a old N-S fence for the NE corner of section 17.

Page 202 County survey notes October 1915 Joseph W. McNeil tied to the ¼ post sections 20 and 21. Type of monument and witnesses not given.

Liber 1, Page 190 Larry G. Beauregard R.L.S. #18654 January 1988 found ¾" pipe in the center line of Werth Road.
Wit: N45°W 84.04' 6" Poplar
N65°W 95.30' 8" Poplar
S60°E 97.22' P. Pole

Liber 1, Page 195, Gary W. St. Charles R.L.S. #27461 January 1989 placed monument box over existing ¾" pipe following road construction. Wit: N45°W 84.04' 6" Poplar
N65°W 95.30' 8" Poplar
S60°E 95.40' P. Pole

B. Description of corner evidence found and/or method applies in restoring or re-establishing corner:

E-5 Found and accepted T. Fabis large nail for the Northeast corner of section 17.

E-8 Found ½" rod in monument box

C. Description of monument for corner and accessories established to perpetuate locating the position of the corner:

E-5 Set 5/8" X 32" rerod with P.S. Cap #33981

Wit: 7" Balsam N25°E 28.09'
10" Balsam S55°E 4.21'
6" Twin Balsam S47°W 5.54'
8" Balsam N37°W 24.25'
Carsonite Post North 1±

E-8 Found ½" rod in monument box

Wit: 8" Poplar N21°W 84.06'
8" Poplar N42°W 73.68'
P. Pole S50°E 95.42'
Sign Post N42°E 51.88'

* from previous survey

Signed by:

Carl T. Kiiskila

Date:

10-29-02

Surveyor's Michigan License No.:

33981

