

# LAND CORNER RECORDATION CERTIFICATE

Filing Requirement of Act 74, Mich. PA 1970

For Corners In:

Alpena  
(County)

Located In

Corner Code #

1. Public Land Survey	T	30N	R	8E	E-13
	T	30N	R	8E	G-13
2. Property Controlling in Section	S	T		R	
	S	T		R	
3. Miscellaneous Property in Section	S	T		R	
	S	T		R	

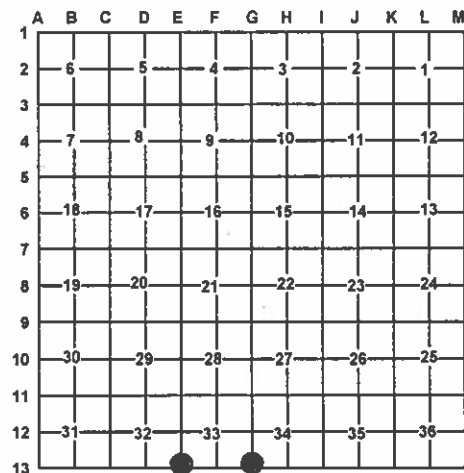
4. Lot No: Recorded Plat:

5. Private Claims:

I, Carl T. Kiiskila, in a field survey on June 29, 2010 do hereby state that under requirements of PA 74, Michigan PA of 1970, the corner points mentioned in lines 1 and 2 above were in conformance with regulations and rules therefore as required in the current manual of survey instructions of the United States Department of the Interior, Bureau of Land Management or by a decree of a Court of Law and/or that the corner points mentioned in lines 3, 4 and 5 above were in conformance with the rules of the Michigan Board of Land Surveyors or by a Decree of a Court of Law; established, re-established, monumented, recovered, found as expressed below:

**NOTE: Not more than 2 corners, all in the same town and range, may be recorded on this certificate.**

Register of Deeds Stamp & File Number



A. Description of original monument and accessories and/or subsequent restoration:

E-13 – Section Corner common to sections 32 & 33, T30N,R8E

1839 – GLO – Lewis Claison set post cor. Secs. 32 & 33  
Wits.  
W. Birch 8" N42 ½°W 29 links  
Cedar 9" N72°E 05 links

G-13 – Section Corner common to sections 33 & 34, T30N,R8E

1839 – GLO – Lewis Claison set post cor. Secs. 33 & 34  
Wits.  
Cedar 12" N33°W 05 links  
Tam 16" N17°E 07 links

1903 – County Surveyor Records – J.W.McNeil tied to corner while doing a survey for Highway Commissioner J.L. Mathews. No witnesses were given.

B. Description of corner evidence found and/or method applies in restoring or re-establishing corner:

E-13 – Section Corner common to sections 32 & 33, T30N,R8E

Found concrete monument raised and leaning from frost movement. Monument fits well with GLO measurements East and West to found monuments. Accepted monument as the best available evidence the original Government corner and reset monument flush with existing ground.

G-13 – Section Corner common to sections 33 & 34, T30N,R8E

Dug in old road bed for remains of cedar stake unable to find reestablished the corner in the center of an old East – West road bed record GLO and J.W. McNeil's distance East (1.15 chains) from the extension of an old North – South road bed to the West.

C. Description of monument for corner and accessories established to perpetuate locating the position of the corner:

E-13 – Section Corner common to sections 32 & 33, T30N,R8E

Concrete monument

Witnesses:

N43°E 20.31' to set N&T on NW side 6" Balsam Fir  
S51°E 10.23' to set N&T on NE side 5" Ash  
S71°W 14.63' to set N&T on S side 10" R. Maple  
N10°W 16.93' to set N&T on W side 10" R. Maple  
S87°W 21.65 to Fd. ½" bar w/ P.S. cap# 41922  
Section Corner common to sections 4 & 5, T29N,R8E  
Center East – West 2 track road South 24.3'

G-13 – Section Corner common to sections 33 & 34, T30N,R8E

Set a 1"x36" galvanized pipe with Standard DNR Cap

Witnesses:

N45°E 21.18' to set N&T on NW side 8" Ash  
S64°E 35.90' to set N&T on SW side 5" Ash  
S06°W 20.85' to set N&T on W side 7" Ash  
N66°W 35.44' to set N&T on SW side 9" Elm

Set Blue Carsonite Post w/loc. tag 1' North

Signed by:

Carl T. Kiiskila

Date:

2/9/11

Surveyor's Michigan License No.:

33981

