

LAND CORNER RECORDATION CERTIFICATE

Filing Requirement of Act 74, Mich. PA 1970

For Corners In:

Alpena

(County)

Located In

Corner Code #

1. Public Land Survey	T	32 N	R 8 E	M-6
	T	32 N	R 8 E	L-5
2. Property Controlling in Section	S	T	R	
	S	T	R	
3. Miscellaneous Property in Section	S	T	R	
	S	T	R	

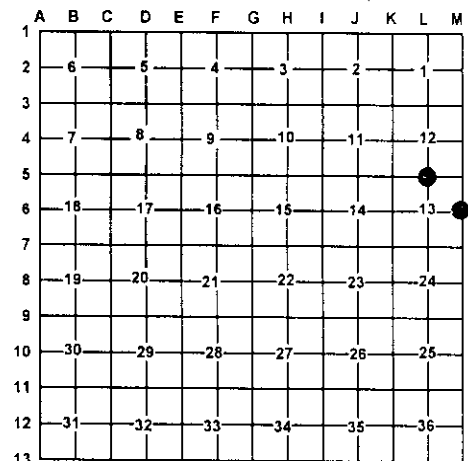
4. Lot No: _____ Recorded Plat: _____

5. Private Claims: _____

I, Carl T. Kiiskila, in a field survey on January 19, 2000 do hereby state that under requirements of PA 74, Michigan PA of 1970, the corner points mentioned in lines 1 and 2 above were in conformance with regulations and rules therefore as required in the current manual of survey instructions of the United States Department of the Interior, Bureau of Land Management or by a decree of a Court of Law and/or that the corner points mentioned in lines 3, 4 and 5 above were in conformance with the rules of the Michigan Board of Land Surveyors or by a Decree of a Court of Law, established, re-established, monumented, recovered, found as expressed below:

NOTE: Not more than 2 corners, all in the same town and range, may be recorded on this certificate.

Register of Deeds Stamp & File Number



A. Description of original monument and accessories and/or subsequent restoration:

M-6 GLO Josiah Knauer, D.S. 1855
Set quarter section post
Wit: 8" Sugar S22°W 12 links
9" Sugar N54°E 17 links

L-5 GLO Josiah Knauer, D.S. July 1855
Set quarter section post
Wit: 10" Yellow Birch S18°W 3 links
14" Elm N36°W 20 links

Pages 121 and 122 County Survey Notes December 1909
Joseph W. McNeil measured the East line of section 13 to be 82.25 chains (5428.5').

Pages 111 and 112 County Survey Notes November 1904
Joseph W. McNeil set a new 4" Cedar stake from both O.B.T.'s down but plain.

B. Description of corner evidence found and/or method applies in restoring or re-establishing corner:

M-6 Re-established the East quarter corner of section 13 online between M-7 and M-4 one half of J.W. McNeil's recorded distance for the East line of section 13, 2714.25 feet North of M-7.

L-5 Re-established the South quarter corner of section 12 at a good fence corner with wire and post going West and North. This position fits J.W. McNeil's survey in section 12 well.

C. Description of monument for corner and accessories established to perpetuate locating the position of the corner:

M-6 1" pipe with PS cap #33981 over 5/8" x 32" rerod
Wit: 5" Balsam N60°E 18.47'
5" Ash N64°W 7.34'
10" Ash S45°W 24.01'
3" Balsam S42°E 13.61'

L-5 DNR monument
Wit: 12" Cedar N64°E 15.34'
14" Twin Maple N02°W 44.15'
4" Triple White Birch N52°W 36.33'
8" Cedar S71°W 34.44'
Corner falls in water 4'± from East
Edge of 20 x 50 pond

Signed by:

Carl T. Kiiskila

Date:

12-10-03

Surveyor's Michigan License No.:

33981

