

BARRY COUNTY REMONUMENTATION

LAND CORNER RECORDATION CERTIFICATE
Filing Requirement of Act 74, Mich. P.A. 1970STATE OF MICHIGAN
COUNTY OF BARRY
RECEIVED FOR RECORD

DEC 14 8 54 AM '93

For corners in

BARRY

(County)

Located in:

Corner Code -##

1. Public Land Survey

T _____ R _____
T _____ R _____
T _____ R _____
T _____ R _____2. Property Controlling
in SectionS _____ T _____ R _____
S _____ T _____ R _____3. Miscellaneous
Property in Sec.S _____ T _____ R _____
S 24 T 2N R 9WLM-7
WITNESS
~~MEANDER~~ CORNER

Sandy Schendelmayer

REGISTER OF DEEDS

002177

other #1

Register of Deeds Stamp & File Number

4. Lot No. _____, Recorded Plat _____

5. Private Claims _____

I, BRIAN REYNOLDS, in a field survey on NOVEMBER 9TH, 19 93, do hereby certify that under requirements of P.A. 74, Michigan P.A. of 1970, the corner points mentioned in lines 1 and 2 above were in conformance with regulations and rules therefore as required in the current manual of survey instructions of the United States Department of the Interior, Bureau of Land Management or by a decree of a Court of Law and/or that the corner points mentioned in lines 3, 4 and 5 above were in conformance with the rules of the Michigan Board of Land Surveyors or by a Decree of a Court of Law; established, re-established, monumented, re-monumented, recovered, found as expressed below:

NOTE: Not more than 4 corners, all in the same town and range, may be recorded on this certificate.

A. Description of original monument and accessories and/or subsequent restoration:

MEANDER CORNER ESTABLISHED BY G.L.O. DEPUTY SURVEYOR SYLVESTER SIBLEY UNDER CONTRACT DATED 5TH OCT., 1826. SET POST ON TRUE LINE ON EAST SIDE LAKE
A BLACK OAK 10 N79E 89
A BLACK OAK 14 S56E 56
SURVEY BY CO. SURVEYOR WALTER HEATH OCT. 13-19, 1903
SET IRON PIPE. ONE U.S. TREE STANDING
NEW WITNESS MAPLE 10" N78E 70

B. Description of corner evidence found and/or method applied in restoring or reestablishing corner:

FOUND FAIRLY NEW GALVANIZED PIPE ON SHORE OF LAKE. DID NOT FALL ON STRAIGHT LINE BETWEEN NORTHWEST CORNER AND NORTH 1/8 POST, NORTHEAST 1/4 AS ESTABLISHED BY HEATH. SET 3/4" REMONUMENTATION IRON AND ALUM. CAP ON NORTH SECTION LINE NEAR SHORE OF LAKE.

C. Description of monument for corner and accessories established to perpetuate locating the position of the corner:

3/4" REMONUMENTATION IRON AND ALUM. CAP
40D NAIL & WITNESS TAG IN SOUTH SIDE 10" MAPLE N80°W 11.63'
40D NAIL & WITNESS TAG IN NORTHWEST SIDE 16" MAPLE N40°E 9.28'
40D NAIL & WITNESS TAG IN SOUTH SIDE 14" MAPLE N60°E 17.88'
40D NAIL & WITNESS TAG IN EAST SIDE 10" OAK S40°E 22.43'
EDGE WATER NORTH 10' AND WEST 15'

SURVEY &
REMONUMENTATION
APR 05 1994
COMMISSION

Signed by

Date

DECEMBER 7, 1993

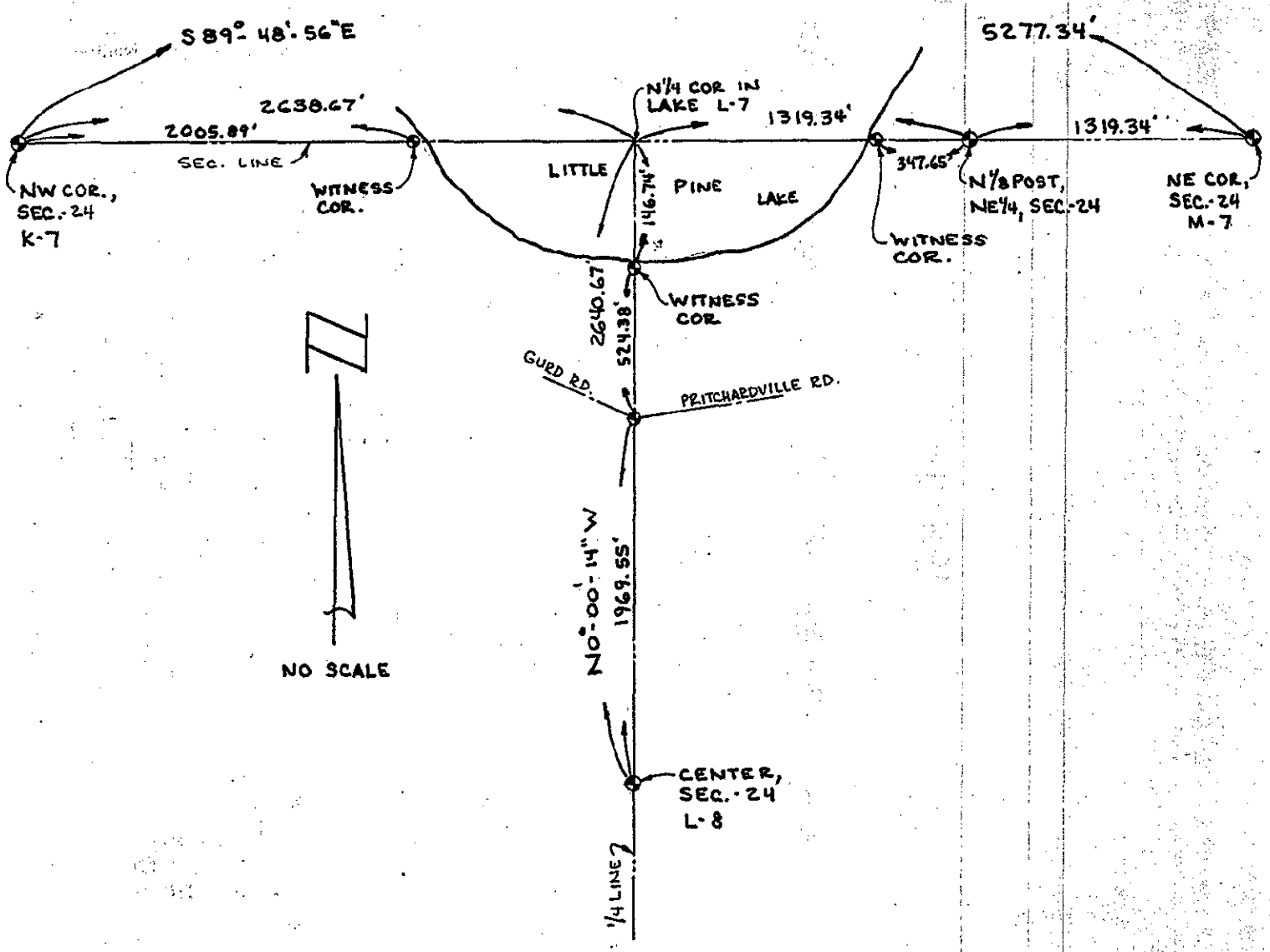
Surveyor's Michigan License No.

31602

151977

CE 111 48 8 11 000

551500



SURVEY &
REMONUMENTATION
APR 05 1994
COMMISSION

