

BARRY COUNTY REMONUMENTATION  
LAND CORNER RECORDATION CERTIFICATE  
Filing Requirement of Act 74, Mich. P.A. 1970

STATE OF MICHIGAN  
COUNTY OF BARRY  
RECEIVED FOR RECORD

DEC 14 8 54 AM '93

Sandy Schondelmayer  
REGISTER OF DEEDS

002176

For corners in

BARRY

(County)

Located In:

Corner Code #

1. Public Land Survey

T R

#2

T R

T R

T R

2. Property Controlling  
in Section

S T R

S T R

3. Miscellaneous

S T R

Property in Sec.

S 24 T 2N R 9W

L-2.1  
WITNESS  
MEANDER CORNER

Register of Deeds Stamp & File Number

4. Lot No. , Recorded Plat

5. Private Claims

I, BRIAN REYNOLDS, in a field survey on NOVEMBER 9TH, 19 93, do hereby certify that under requirements of P.A. 74, Michigan P.A. of 1970, the corner points mentioned in lines 1 and 2 above were in conformance with regulations and rules therefore as required in the current manual of survey instructions of the United States Department of the Interior, Bureau of Land Management or by a decree of a Court of Law and/or that the corner points mentioned in lines 3, 4 and 5 above were in conformance with the rules of the Michigan Board of Land Surveyors or by a Decree of a Court of Law; established, re-established, monumented, re-monumented, recovered, found as expressed below:

NOTE: Not more than 4 corners, all in the same town and range, may be recorded on this certificate.

A. Description of original monument and accessories and/or subsequent restoration:

MEANDER CORNER SET BY R.J. MERCHON (NO DATE)  
MEANDER POST ON 1/4 LINE. SOUTH SIDE OF LAKE IN SEC. 24.  
W. OAK 18 N74 1/2E 54  
W. OAK 30 S29W 45 1/2

SURVEY &  
REMONUMENTATION

APR 04 2000

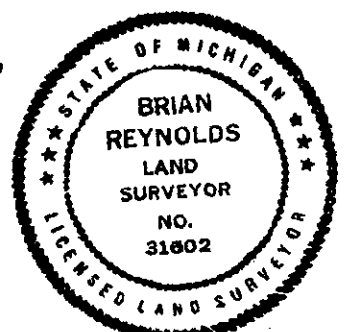
SECTION

B. Description of corner evidence found and/or method applied in restoring or reestablishing corner:

COULDN'T LOCATE OLD STAKE. SET 3/4" REMONUMENTATION IRON AND ALUM. CAP ON NORTH AND SOUTH 1/4 LINE SOUTH OF SHORE OF LITTLE PINE LAKE.

C. Description of monument for corner and accessories established to perpetuate locating the position of the corner:

3/4" REMONUMENTATION IRON AND ALUM. CAP.  
40D NAIL & WITNESS TAG IN SOUTH SIDE 16" TRIP. MAPLE WEST 9.65'  
40D NAIL & WITNESS TAG IN WEST SIDE 10" MAPLE SOUTH 4.14'  
40D NAIL & WITNESS TAG IN NORTHWEST ROOT 28" OAK S40°E 30.59'  
40D NAIL & WITNESS TAG IN SOUTH SIDE 24" OAK EAST 32.20'  
EDGE OF LAKE NORTH 6'±

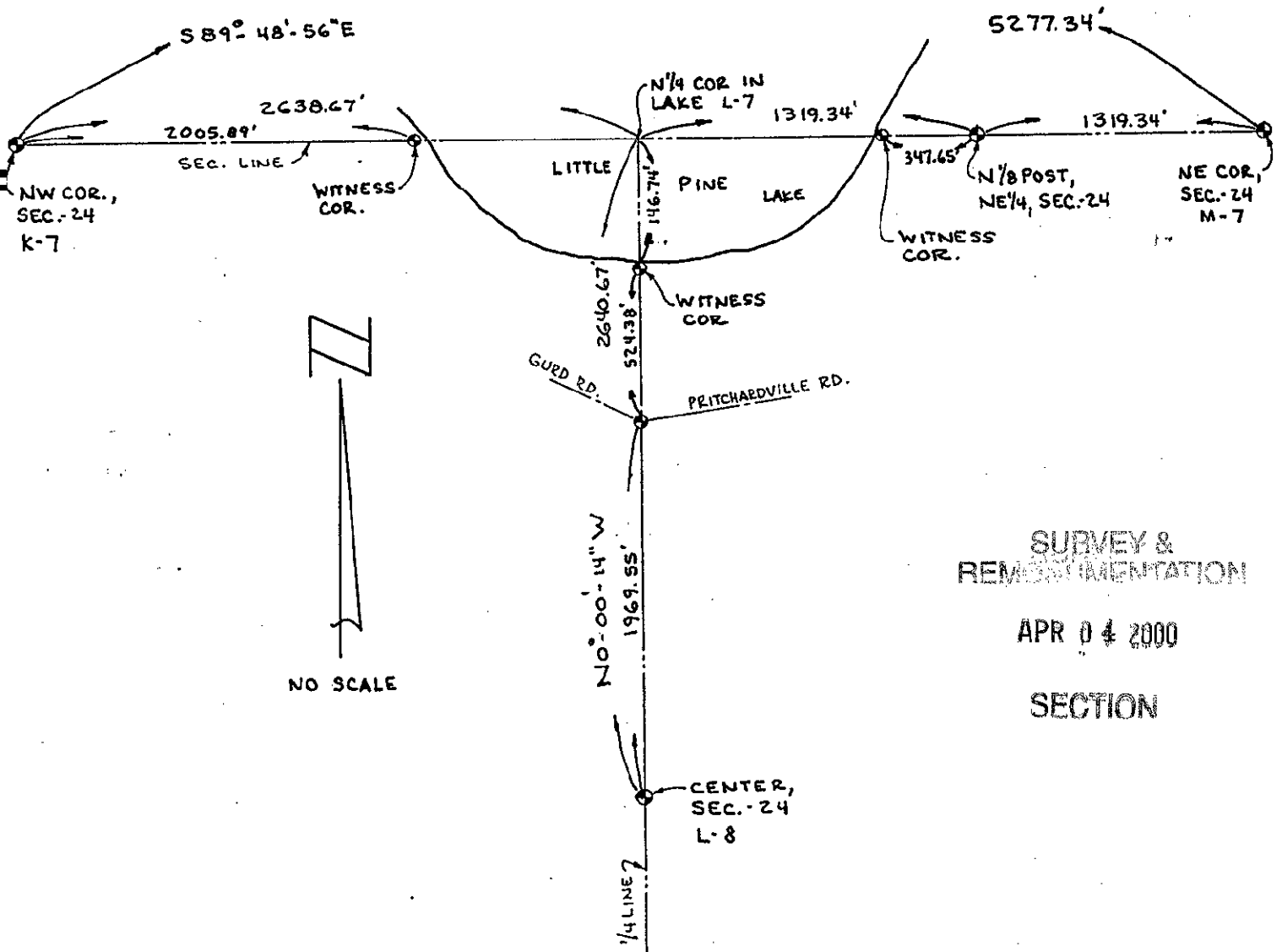


R Reynolds

DECEMBER 7, 1993

002176

051800



NO SCALE

SURVEY &  
REMONUMENTATION

APR 04 2000

SECTION