

STAMP &
VENTATION

APR 08 1996

COMMISSION

Barry County Remonumentation
LAND CORNER RECORDATION CERTIFICATE
Filing Requirement of Act 74, Mich. P.A. 1970

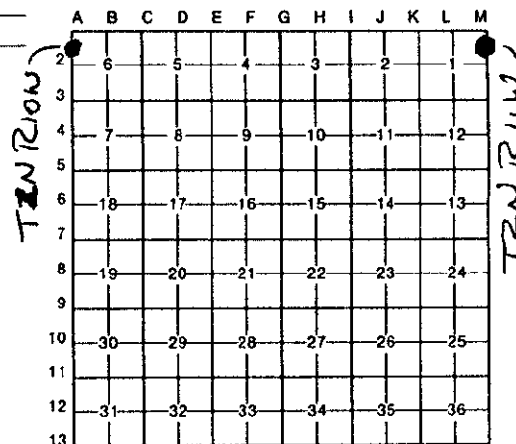
STATE OF MICHIGAN
COUNTY OF BARRY
RECEIVED FOR RECORD

Nov 20 9 08 AM '95

Sandy Schondelmayer
REGISTER OF DEEDS

002330

Register of Deeds Stamp & File Number



For corners in

Barry

(County)

Located In:

Corner Code #

1. Public Land Survey

T R

T R

T R

T R

2. Property Controlling
in Section

S 1 T 2N R 11W

S 6 T 2N R 10W

Martin Twp.

Orangeville Twp.

3. Miscellaneous
Property in Sec.

S T R

S T R

4. Lot No. , Recorded Plat

5. Private Claims

I, John C. Bueche, in a field survey on July, 19 95,
do hereby certify that under requirements of P.A. 74, Michigan P.A. of 1970, the corner points mentioned
in lines 1 and 2 above were in conformance with regulations and rules therefore as required in the
current manual of survey instructions of the United States Department of the Interior, Bureau of Land
Management or by a decree of a Court of Law and/or that the corner points mentioned in lines 3, 4 and 5
above were in conformance with the rules of the Michigan Board of Land Surveyors or by a Decree of a
Court of Law; established, re-established, monumented, re-monumented, recovered, found as
expressed below:

NOTE: Not more than 4 corners, all in the same town and range, may be recorded
on this certificate.

A. Description of original monument and accessories and/or subsequent restoration:

Meander corner set by GLO Deputy Surveyor, John Mullett, January 11, 1826

Tank 3 S 75 W 28

Willow 3 S 10 E 39

19.74 chains North of M-2 T2N, R11W (GLO position is now 220'± N of S shore of
Gun Lake)

ACT 345 BARRY COUNTY REMONUMENTATION
APPROVED BY PEER REVIEW AT A MEETING HELD ON

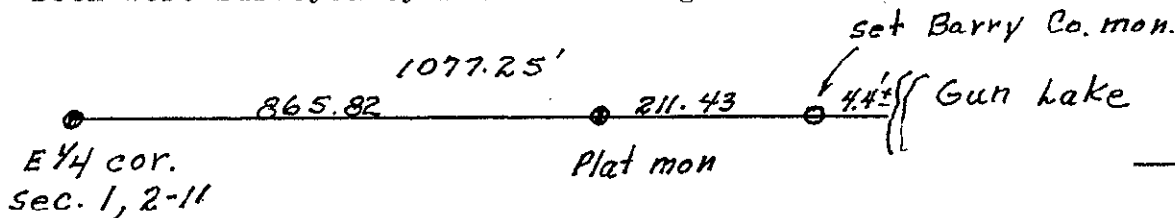
AUGUST 14, 1995
BRIAN REYNOLDS
COUNTY SURVEYOR

B. Description of corner evidence found and/or method applied in restoring or reestablishing corner:

Found Mon. @ SW cor. Lot 1, Crescent Beach (1957) Sec. 6, 2-10
& iron on West line of Lot

These above points are common to SE cor. Lot 1 & the E line of
Lapham's Lake Shore Lots (1957) Sec. 1, 2-11

Both were surveyed by Lee C. Darling



C. Description of monument for corner and accessories established to perpetuate locating the position of the corner:

Set Barry Co. Mon. (3/4" x 24" w/Alum. Cap)

NW cor. hse. #13012 Marsh Rd. S 45 W 87.88'

NE cor. hse. #13012 Marsh Rd. S 10 W 76.29'

NE cor. hse. #13012 Marsh Rd. S 35 E 99.73'

NE cor. wooden 4" x 4" fence post N 65 W 53.07'

S edge conc. sea wall North 4.4'±

On C/L Patterson extended North



Signed by John C. Bueche
John C. Bueche
Surveyor's Michigan License No. 13027

Date Oct 2, 1995