

SURVEY & MONUMENTATION

APR 08 1996

Barry County Remonumentation LAND CORNER RECORDATION CERTIFICATE

Filing Requirement of Act 74, Mich. P.A. 1970

COMMISSION

STATE OF MICHIGAN
COUNTY OF BARRY
RECEIVED FOR RECORD

Nov 20 9 08 AM '95

Sandy Schendelmayer
REGISTER OF DEEDS

For corners in

Barry

(County)

Located In:

Corner Code ##

1. Public Land Survey

T R

T R

T R

T R

2. Property Controlling
in Section

S T R

S 31 T 3N R 10W

3. Miscellaneous
Property in Sec.

S T R

S T R

Yankee Springs Twp.

002324

Other #1

Register of Deeds Stamp & File Number

4. Lot No. , Recorded Plat

5. Private Claims

I, John C. Bueche, in a field survey on September, 19 95, do hereby certify that under requirements of P.A. 74, Michigan P.A. of 1970, the corner points mentioned in lines 1 and 2 above were in conformance with regulations and rules therefore as required in the current manual of survey instructions of the United States Department of the Interior, Bureau of Land Management or by a decree of a Court of Law and/or that the corner points mentioned in lines 3, 4 and 5 above were in conformance with the rules of the Michigan Board of Land Surveyors or by a Decree of a Court of Law; established, re-established, monumented, re-monumented, recovered, found as expressed below:

NOTE: Not more than 4 corners, all in the same town and range, may be recorded on this certificate.

A. Description of original monument and accessories and/or subsequent restoration:

GLO Deputy Surveyor, Lucius Lyon, 1826
Set fractional post on North side Gun Lake
Elm 4 N 16 W 10
W Oak 5 S 81 E 31
6.60 chains (435.60') S of M-12 T3N, R11W
Position is now 20'± S of N shore of Gun Lake

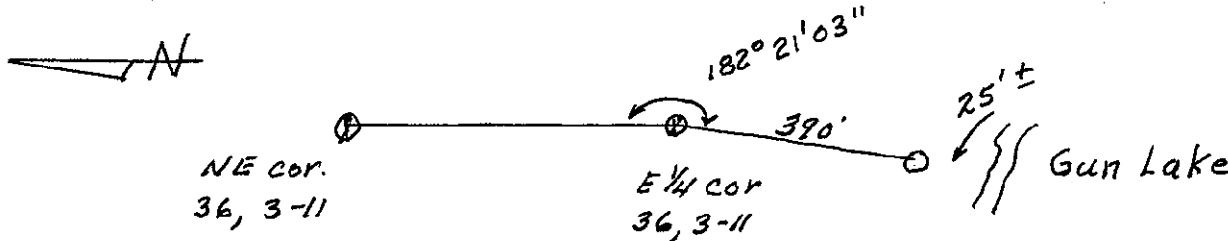
ACT 345 BARRY COUNTY REMONUMENTATION
APPROVED BY PEER REVIEW AT A MEETING HELD ON

OCT 10, 1995 w/ ALLEGAN CO. BR
BRIAN REYNOLDS COUNTY SURVEYOR

B. Description of corner evidence found and/or method applied in restoring or reestablishing corner:

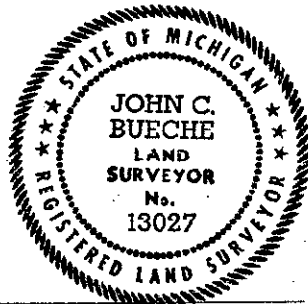
Set Allegan Co. Mon. on East line of Gilger Park, record L5, P100.
Allegan Co. as per recorded survey L001, P543 by Ratekin & Assoc., 1978.

Cor. is 390.00' South of E 1/4 cor., Sec. 36, 3-11



C. Description of monument for corner and accessories established to perpetuate locating the position of the corner:

Set Allegan Co. Mon. 3/4" x 24" pin with Cap
South edge of conc. sea wall, South 24.50'
SE cor. fnd. to sun porch S. ent. to hse. #13019 S 80 W 43.75'
NE cor. fnd. to hse. #13019 @ Annex N 30 E 27.85'
NW cor. brick hse. #3735 N 15 E 74.70'
SW cor. brick hse. #3735 N 30 E 65.28'



Signed by John C. Bueche
John C. Bueche
Surveyor's Michigan License No. 13027

Date Oct 2, 1995