

APPROVED

Date 12-16-97 RRC

CALHOUN COUNTY
REMONUMENTATION.

CALHOUN COUNTY REMONUMENTATION
LAND CORNER RECORDATION CERTIFICATE
Filing Requirement of Act 74, Mich. P.A. 1970

STATE OF MICHIGAN
CALHOUN COUNTY
RECORDED

19 DEC 97 2:37 P.M.

ANNE D. NORLANDER
CLERK - REGISTER OF DEEDS

LIBER 1985 PAGE 524

Register of Deeds Stamp & File Number

For corners in

CALHOUN	Located in:	Corner Code #
(County)		
MARENGO		
1. Public Land Survey	T R	
	T R	
	T R	
	T R	
2. Property Controlling in Section	S 23 T 2S R 5W	J-8
	S T R	
3. Miscellaneous Property in Sec.	S T R	
	S T R	

4. Lot No. , Recorded Plat
5. Private Claims

I, MICHAEL A. GROAT, in a field survey on DECEMBER 2, 1997 do hereby state that under requirements of P.A. 74, Michigan P.A. of 1970, the corner points mentioned in lines 1 and 2 above were in conformance with regulations and rules therefore as required in the current manual of survey instructions of the United States Department of the Interior, Bureau of Land Management or by a decree of a Court of Law and for that the corner points mentioned in lines 3, 4 and 5 above were in conformance with the rules of the Michigan Board of Land Surveyors or by a Decree of a Court of Law; established, re-established, monumented, recovered, found as expressed below:

NOTE: Not more than 2 corners, all in the same town and range, may be recorded on this certificate.

	A	B	C	D	E	F	G	H	I	J	K	L	M
1													
2	6		5		4		3		2		1		
3													
4	7		8		9		10		11		12		
5													
6	18		17		16		15		14		13		
7													
8	19		20		21		22		23		24		
9													
10	30		29		28		27		26		25		
11													
12	31		32		33		34		35		36		
13													

A. Description of original monument and accessories and/or subsequent restoration:

WELLS, NO DATE GIVEN, CORNER WAS AT THE INTERSECTION OF STONE FENCES EAST AND SOUTH. NO OTHER WITNESSES GIVEN.

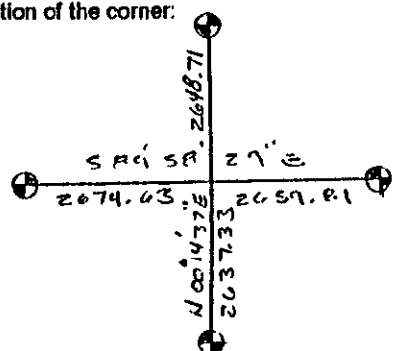
B. Description of corner evidence found and/or method applied in restoring or reestablishing corner:

DUE TO CONSTRUCTION OF I-94, NO REMAINS OF THIS CORNER COULD BE FOUND. SET A HARRISON MONUMENT AT THE INTERSECTION OF THE 1/4 LINES.

C. Description of monument for corner and accessories established to perpetuate locating the position of the corner:

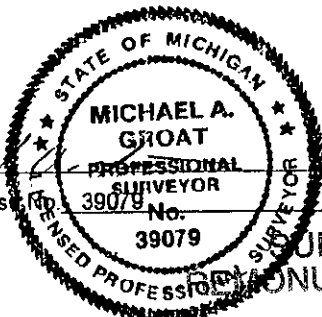
SET HARRISON MONUMENT

9.2' SOUTH OF SOUTH EDGE OF CONCRETE FOR WESTBOUND LANE
EAST, 2644.08', FACE OF CENTER SUPPORT OF 23 MILE ROAD BRIDGE
SOUTH, 146.20', ANGLE IRON FENCE POST
WEST, 1331.00', FACE OF CENTER SUPPORT FOR 22-1/2 MILE ROAD BRIDGE



Signed by MICHAEL A. GROAT
Surveyor's Michigan License No. 39079

Date DECEMBER 10, 1997



APR 07 1998

SECTION