

APPROVED

DATE 4-22-94
CALHOUN COUNTY
REMONUMENTATION

CALHOUN COUNTY REMONUMENTATION
LAND CORNER RECORDATION CERTIFICATE
Filing Requirement of Act 74, Mich. P.A. 1970

CLERK-REGISTER
CALHOUN COUNTY, MICH.
ANNE B. NORLANDER

MAR 17 9 57 AM '94

RECORDED

For corners in

Calhoun (County)	Located In:	Corner Code ##
1. Public Land Survey	T _____ R _____	_____
	T _____ R _____	_____
	T _____ R _____	_____
	T _____ R _____	_____
2. Property Controlling in Section	S _____ T _____ R _____	_____
	S _____ T _____ R _____	_____
3. Miscellaneous Property in Sec.	S 35 T 2 S R 8 W	_____
	S _____ T _____ R _____	_____
4. Lot No. _____, Recorded Plat _____		
5. Private Claims _____		

Register of Deeds Stamp & File Number

#1 "other"

	A	B	C	D	E	F	G	H	I	J	K	L	M
2	6		5		4		3		2		1		
3													
4	7		8		9		10		11		12		
5													
6	18		17		16		15		14		13		
7													
8	19		20		21		22		23		24		
9													
10	30		29		28		27		26		25		
11													
12	31		32		33		34		35		36		
13													

I, William K. Crane, in a field survey on March 10, 19 94, do hereby certify that under requirements of P.A. 74, Michigan P.A. of 1970, the corner points mentioned in lines 1 and 2 above were in conformance with regulations and rules therefore as required in the current manual of survey instructions of the United States Department of the Interior, Bureau of Land Management or by a decree of a Court of Law and/or that the corner points mentioned in lines 3, 4 and 5 above were in conformance with the rules of the Michigan Board of Land Surveyors or by a Decree of a Court of Law; established, re-established, monumented, re-monumented, recovered, found as expressed below:

NOTE: Not more than 4 corners, all in the same town and range, may be recorded on this certificate.

A. Description of original monument and accessories and/or subsequent restoration:

South 1/4 Corner, Section 35, Town 2 South, Range 8 West, falls in Paul Lake and was not set in the original government survey. Reference Monument set on South Section line on the West side of Paul Lake for Remonumentation.

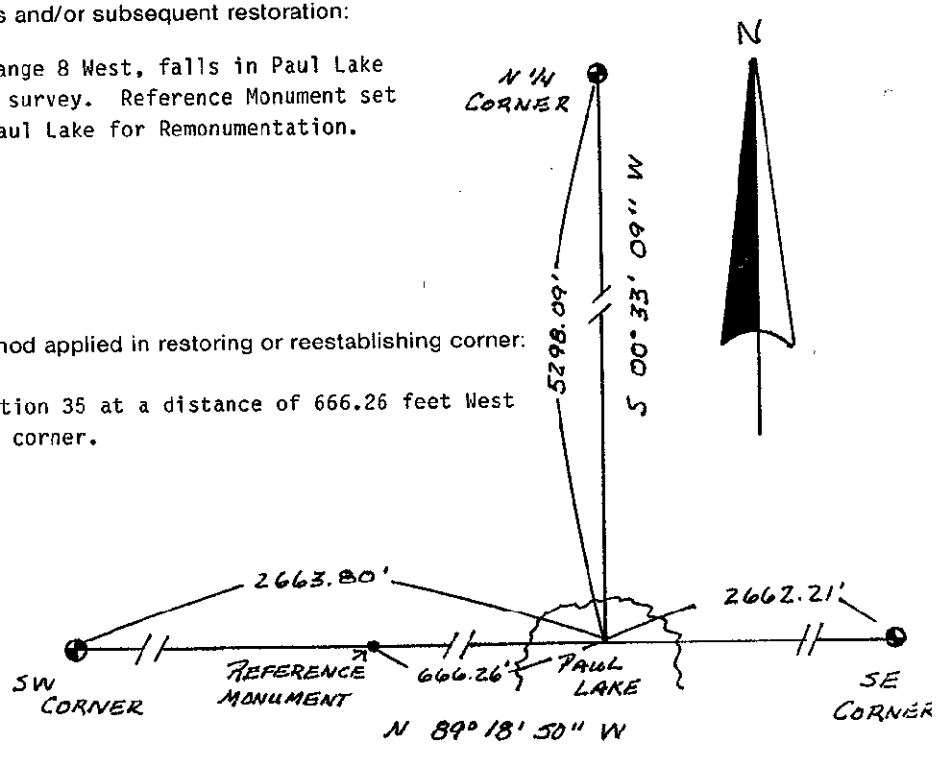
B. Description of corner evidence found and/or method applied in restoring or reestablishing corner:

Set Reference Monument on South line of Section 35 at a distance of 666.26 feet West of the mathematical location of the South 1/4 corner.

SURVEY &
REMONUMENTATION

OCT 27 1994

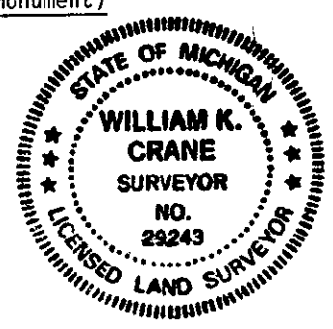
COMMISSION



C. Description of monument for corner and accessories established to perpetuate locating the position of the corner:

Set Reference Monument: Standard Calhoun County Remonumentation Monument (Bernsten Monument)

18" Hickory	S 60° E	27.24'
48" Oak	S 10° E	8.98'
RR tie fence post	West	7.06'
10" Hickory	N 80° W	18.27'
South 1/4 Corner	East	666.26'
(Mathematical Location)		



Signed by William K Crane

Date 3/16/94

Surveyor's Michigan License No. 29243