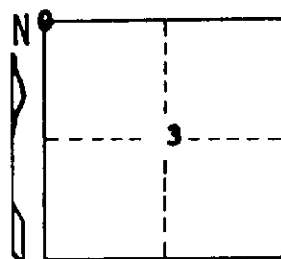


STATE OF MICHIGAN
DEPARTMENT
OF
NATURAL RESOURCES
LAND CORNER RECORD

CRAWFORD COUNTY
T 26 & 27 N R 1 W

DESCRIPTION OF CORNER Sec. corner common to Sections 3-4-33-34
CORNER MONUMENT Set Dept. Monument
DATE MONUMENT PLACED AND WITNESSED 8-18-70
WITNESSES TO CORNER.....



8" Tamarack N 20 W 78.6'
6" Tamarack N 45 E 40.8'
AND

CIRCLE CORNER REGISTERED

DESCRIPTION IN DETAIL AS TO HOW CORNER WAS LOCATED AND IDENTIFIED OR RESTORED.

This corner was found during a survey of Sec. 3. Found pipe in concrete block at corner as established by Schaaf in 1930's. Schaaf record claims to have all U.S.B.T. stumps. Fits U.S. record for swamp and marsh calls. Unable to locate Fargo corner.

SURVEYOR'S SEAL

DISTRIBUTION:

SIGNED

Anthony J. Betting
REGISTERED LAND SURVEYOR 10068

DATE 8-25-70

County Courthouse
Area Forester (Regions I & II)
District or Region Surveyor
Forestry Div., Lansing

R 4047
Rev. 10/68