

MICHIGAN
DEPARTMENT OF CONSERVATION
FORESTRY DIVISION

LAND CORNER RECORD

T. 33 N.R. 8 W

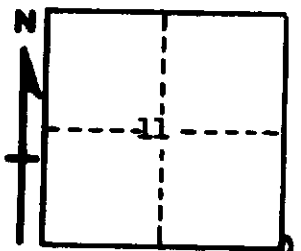
Charlevoix COUNTY

DESCRIPTION OF CORNER Sec. corner common to sections 11-12-13-14

CORNER MONUMENT Set 1" x 36" pipe with brass cap 6" below ground

DATE MONUMENT PLACED AND WITNESSED 12/7/67

WITNESSES TO CORNER.....



24" Walnut N 87° 30' W 103.50'

6" Ash S 78° 30' E 52.80'

AND

DESCRIPTION IN DETAIL AS TO HOW CORNER WAS LOCATED AND IDENTIFIED OR RESTORED.

This corner was found by a $\frac{1}{2}$ " sq. x 12" spike and fence E & W and centerline county road N & S & $\frac{1}{2}$ " pipe 33' East.

SURVEYOR'S SEAL

SIGNED

GREGORY A. SHADKO

DATE

12/12/67

#1934

REGISTERED LAND SURVEYOR

190062