

RECEIVED
FOR RECORD

99 DEC 27 PM 4:20

LAND CORNER RECORDATION CERTIFICATE
Filing Requirement of Act 74, Mich. P.A. 1970

For corners in

Deity Pappas
CLERK/REGISTER
CHEBOYGAN COUNTY MICHIGANCheboygan Located in: Corner Code #
(County)

1. Public Land Survey	T 34	R 1E	G-5
	T	R	
	T	R	
	T	R	
2. Property Controlling in Section	S	T	R
	S	T	R
3. Miscellaneous Property in Sec.	S	T	R
	S	T	R

RE

MAR 03 2000

SECTION

Register of Deeds Stamp & File Number

4. Lot No. _____, Recorded Plat _____
5. Private Claims _____

I, Ronald Bischer, in a field survey on Aug. 11, 1999 do hereby state that under requirements of P.A. 74, Michigan P.A. of 1970, the corner points mentioned in lines 1 and 2 above were in conformance with regulations and rules therefore as required in the current manual of survey instructions of the United States Department of the Interior, Bureau of Land Management or by a decree of a Court of Law and/or that the corner points mentioned in lines 3, 4 and 5 above were in conformance with the rules of the Michigan Board of Land Surveyors or by a Decree of a Court of Law; established, re-established, monumented, recovered, found as expressed below:

NOTE: Not more than 2 corners, all in the same town and range, may be recorded on this certificate.

1	A	B	C	D	E	F	G	H	I	J	K	L
2		6		5		4		3		2		1
3												
4		7		8		9		10		11		12
5												
6		18		17		16		15		14		13
7												
8		19		20		21		22		23		24
9												
10		30		29		28		27		26		25
11												
12		31		32		33		34		35		36
13												

A. Description of original monument and accessories and/or subsequent restoration:

G-5
1855 GLO Notes Resurvey
N72° E 10 lks 8" Aspen
S45° W 38 lks 8" Aspen

June 9, 1995 Ronald Bischer #22428
DNR Monument

S83° W 71.20' 5" Maple
S57° E 55.54' 8" Maple
S31° E 37.95' 7" Beech
S21° E 47.25' 6" Maple

April 2, 1960 Dean DelaMater #26748
1" pipe with 4" Brass cap
S80° W 24.7' 7" Red oak
S58° E 16.6' 3" Beech

B. Description of corner evidence found and/or method applied in restoring or reestablishing corner:

G-5

Aug. 11, 1999 Cheboygan County Remonumentation
Ronald Bischer #22428
found DNR monument and 3 witnesses
set one new witness

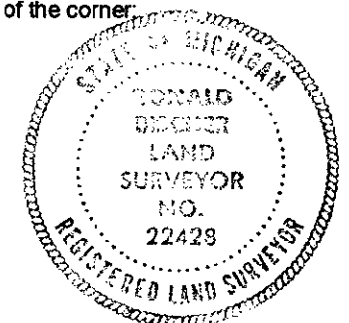


C. Description of monument for corner and accessories established to perpetuate locating the position of the corner:

G-5

DNR monument
S31° E 37.95' 7" Beech
S21° E 47.25' 6" Maple
S57° E 55.54' 8" Maple
S65° W 77.18' 3" Oak

LIBER 011 PAGE 175



Signed by Ronald R. Bischer
Surveyor's Michigan License No. 22428

Date 12-18-99