

MICHIGAN
DEPARTMENT OF CONSERVATION
FORESTRY DIVISION

LAND CORNER RECORD

T. 35 N. R. 1W

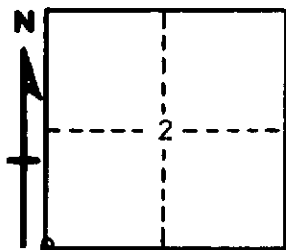
CHEBOYGAN COUNTY

DESCRIPTION OF CORNER SECTION CORNER COMMON TO SECTIONS 2 - 3 - 10 - 11

CORNER MONUMENT 1" PIPE WITH 4" ALUMINUM CAP

DATE MONUMENT PLACED AND WITNESSED JUNE 23, 1965

WITNESSES TO CORNER.....



7"ELM N83E 22.7

6" MAPLE S12E 31.4

AND

DESCRIPTION IN DETAIL AS TO HOW CORNER WAS LOCATED AND IDENTIFIED OR RESTORED.

THIS CORNER WAS FOUND WHILE MAKING A SURVEY IN THIS AREA. FOUND VERY OLD STAKE BOTTOM AT CORNER. CHECKS VERY WELL WITH OCCUPATION AND FENCE LINE WEST AND OKAY FOR MEASUREMENT NORTH AND EAST. NO OTHER EVIDENCE AVAILABLE.

SURVEYOR'S SEAL

SIGNED Kenneth J. Ostling DATE JUNE 23, 1965
REGISTERED LAND SURVEYOR
K. J. Ostling, #10068