

# LAND CORNER RECORDATION CERTIFICATE

Filing Requirement of Act 74, Mich. PA 1970

For Corners In: Cheboygan (County)	Located In	Corner Code #
1. Public Land Survey	T 35N R 1E	I-4
	T 35N R 1E	I-5
2. Property Controlling in Section	S T R	
	S T R	
3. Miscellaneous Property in Section	S T R	
	S T R	

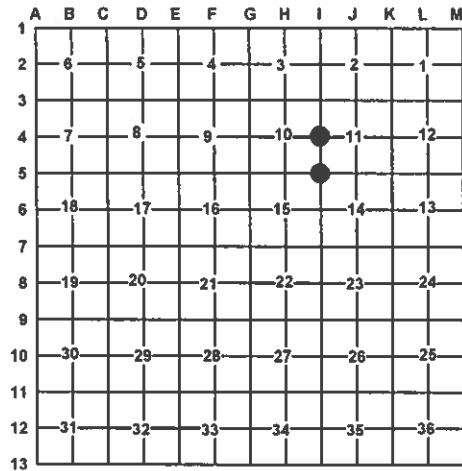
4. Lot No: \_\_\_\_\_ Recorded Plat: \_\_\_\_\_

5. Private Claims: \_\_\_\_\_

I, Carl T. Kiiskila, in a field survey on April 5, 2011 do hereby state that under requirements of PA 74, Michigan PA of 1970, the corner points mentioned in lines 1 and 2 above were in conformance with regulations and rules therefore as required in the current manual of survey instructions of the United States Department of the Interior, Bureau of Land Management or by a decree of a Court of Law and/or that the corner points mentioned in lines 3, 4 and 5 above were in conformance with the rules of the Michigan Board of Land Surveyors or by a Decree of a Court of Law; established, re-established, monumented, recovered, found as expressed below:

**NOTE: Not more than 2 corners, all in the same town and range, may be recorded on this certificate.**

Register of Deeds Stamp & File Number



## A. Description of original monument and accessories and/or subsequent restoration:

I-4 – ¼ Corner comm. to sec.'s 10 & 11, T35N, R01E

1840 – GLO – Brevort- Set qr. sect. post.  
Cedar 12 N61°W 12 ½  
Tamarack 13 S70°E 19

1967 – Cheb. Co. Land Cor. Rec. – L.a, p.279 – Orlando Doyle, P.S.#7319 – Fd. wood stake, replaced w/conc. mon. 12" Maple N08°W 23.66'; 8" Birch S25°W 7.25'; 5" Maple N68°W 16.07'

1984 – L.C.R.C. – L.1, p.318 – Orlando Doyle, P.S.#7319 – Same info as above.

1989 – L.C.R.C. – L.2, p.49 – James H. Granger, P.S.#16041 – Fd. conc. mon. 8" Scotch Pine S62°E 2.32'; 8" W. Pine N48°W 23.03'; 20" Poplar S60°W 4.08'; 10" W. Birch N04°W 19.72'

I-5 – Section Corner comm. to sec.'s 10,11,14 & 15, T35N, R01E

1840 – GLO – Brevort- Set post cor. of sects. 10,11,14,15  
Sp. Pine 6" S70°W 53'; Sp. Pine 9" N75°E 83'

1961 – Cheboygan Co. Land Cor. Record – L.a, p.269 – Dean C. DeLamater, P.S.#5778 – 1 ½" Iron Pipe. 5" Tw. Oak N31°W 22.75'; 16" N. Pine S89°E 89.45'; 10" Oak S78°E 37.16';

1989 – L.C.R.C. – L.2, p.48 – James H. Granger, P.S.#16041 – Fd. 5/8" rod. 12" R. Oak S72°E 36.78'; 10" R. Pine S81°W 65.51'; 10" Poplar N36°E 51.93'; 12" Poplar N62°W 57.12'

2000 – Road Easement Description – Brian K. Fullford, P.S.#41099 – Fd. 5/8" iron rod. S72°E 51.20' 12" R. Pine; S81°W 65.51' 12" R. Pine; N36°E 51.93' 12" Poplar; N62°W 57.35' 14" Poplar

2008 – L.C.R.C. – L.4, p.125 – Charles H. Hein, P.S.#43056 – Fd. ½" rod w/cap#41099 in East edge of pavement without mon. box. Set ½"x18" rerod in new mon. box. 12" Scotch Pine N80°E 77.40'; 8" J. Pine N50°E 94.03'; 14" R. Pine N38°W 112.11'; 12" R. Pine S50°W 62.41'

## B. Description of corner evidence found and/or method applies in restoring or re-establishing corner:

I-4 – ¼ Corner comm. to sec.'s 10 & 11, T35N, R01E

Found and accepted concrete monument as the best available evidence for the position of the original corner. Added plastic ½" P.S. cap #33981 to monument. Found no other evidence to dispute the location for the corner.

I-5 – Section Corner comm. to sec.'s 10,11,14 & 15, T35N, R01E

Found and accepted ½" CIR#43056 in monument box 8.5' East of centerline of paved road. Corner falls in centerline of E-W trail road. Found no other evidence to dispute the location for the corner.

## C. Description of monument for corner and accessories established to perpetuate locating the position of the corner:

I-4 – ¼ Corner comm. to sec.'s 10 & 11, T35N, R01E

4" dia. concrete monument with plastic P.S. cap #33981

Wit: \*N16°E 41.06' to set N&T on W side 17" W. Birch  
N65°E 22.95' to set N&T on S side 6" R. Maple  
\*S69°E 2.30' to set N&T on NE side 10" R. Pine  
S30°W 15.19' to set N&T on NW side 6" Tw. S. Maple  
\*N46°W 23.08' to set N&T on NE side 12" W. Pine  
Set Blue Carsonite Post w/location Tag 1' North  
\* Witness of previous record.

I-5 – Section Corner comm. to sec.'s 10,11,14 & 15, T35N, R01E

½" Capped Iron Rod w/ cap#43056 in monument box.

Wit: N45°E 36.68' to set N&T on SE side 3" R. Pine  
\*S68°E 50.95' to set N&T at old N&T on NE side 16" R. Pine  
\*S76°W 65.22' to set N&T at old N&T on SE side 16" R. Pine  
\*N53°W 57.15' to set N&T at old N&T on SW side 18" Aspen  
N24°W 81.95' to set N&T at old N&T on SW side 15" R. Pine

\* Witness of previous record.

Signed by: Carl T. Kiiskila  
Surveyor's Michigan License No.: 33981

Date: 5-1-12

