

LAND CORNER RECORDATION CERTIFICATE

Filing Requirement of Act 74, Mich. PA 1970

For Corners In:
Cheboygan
(County)

Located In

Corner Code #

1. Public Land Survey	T	35N	R	1E	G-4
	T	35N	R	1E	G-5
2. Property Controlling in Section	S	T		R	
	S	T		R	
3. Miscellaneous Property in Section	S	T		R	
	S	T		R	

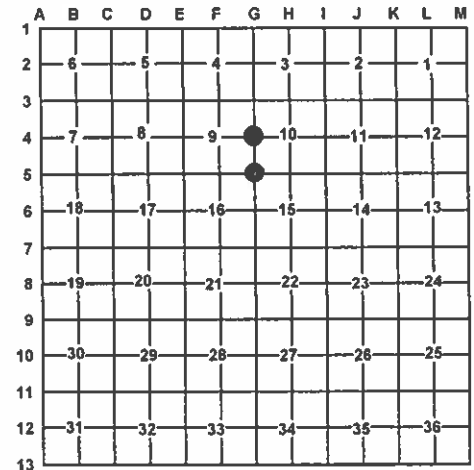
Register of Deeds Stamp & File Number

4. Lot No: Recorded Plat:

5. Private Claims:

I, Carl T. Kiiskila, in a field survey on April 5, 2011 do hereby state that under requirements of PA 74, Michigan PA of 1970, the corner points mentioned in lines 1 and 2 above were in conformance with regulations and rules therefore as required in the current manual of survey instructions of the United States Department of the Interior, Bureau of Land Management or by a decree of a Court of Law and/or that the corner points mentioned in lines 3, 4 and 5 above were in conformance with the rules of the Michigan Board of Land Surveyors or by a Decree of a Court of Law; established, re-established, monumented, recovered, found as expressed below:

NOTE: Not more than 2 corners, all in the same town and range, may be recorded on this certificate.



A. Description of original monument and accessories and/or subsequent restoration:

G-4 – ¼ Corner comm. to sec.'s 9 & 10, T35N, R01E

G-5 – Section Corner comm. to sec.'s 9,10,15,16, T35N, R01E

1840 – GLO – Brevort- Set qr. section post.
Sp. Pine 10 N36°W 46
Sp. Pine 9 S48°E 32

1840 – GLO – Brevort- Set post corner of sec's 9,10,15,16
Sp. Pine 8 S42°E (no dist. given)
Y. Pine 14 N48°W 87

B. Description of corner evidence found and/or method applies in restoring or re-establishing corner:

G-4 – ¼ Corner comm. to sec.'s 9 & 10, T35N, R01E

G-5 – Section Corner comm. to sec.'s 9,10,15,16, T35N, R01E

Found and accepted 2" dia. pipe in trail road intersection as the best available evidence for the position of the original corner. Drove ½"x 12" CIR #33981 in center of found pipe. Found no other evidence to dispute the location for the corner.

Found and accepted 2 ¼" dia. pipe in trail road intersection 8" below grade as the best available evidence for the position of the original corner. Drove 60D spike in center of pipe. Found no other evidence to dispute the location for the corner.

C. Description of monument for corner and accessories established to perpetuate locating the position of the corner:

G-4 – ¼ Corner comm. to sec.'s 9 & 10, T35N, R01E

G-5 – Section Corner comm. to sec.'s 9,10,15,16, T35N, R01E

2" diameter pipe w/ ½"x12" CIR #33981 in center.

2 ¼" diameter iron pipe w/60D spike in center of pipe.

Wit: N42°E 45.15' to set N&T on NW side 16" R. Pine
*S51°E 71.14' to set N&T on NE side 12" R. Pine
*S19°E 84.70' to set N&T on SW side 11" J. Pine
N26°W 28.35' to set N&T on W side 3" Oak
Set Blue Carsonite Post w/ location tag 20' East
* Scribed old blazes on trees.

Wit: N18°E 70.14' to set N&T on NW side 14" Oak
*N51°E 39.23' to set N&T on SE side 11" R. Pine
*S71°E 117.70' to set N&T on N side 4" J. Pine
S47°E 42.02' to set N&T on SW side 4" Oak

* Scribed old blazes on trees.

Signed by:

Carl T. Kiiskila

Date:

5-1-12

Surveyor's Michigan License No.:

33981

