

LAND CORNER RECORDATION CERTIFICATE

Filing Requirement of Act 74, Mich. PA 1970

For Corners In: Cheboygan (County)	Located In	Corner Code #
1. Public Land Survey	T _____ R _____	_____
2. Property Controlling in Section	S <u>22</u> T <u>35N</u> R <u>01E</u>	<u>5</u>
	S <u>22</u> T <u>35N</u> R <u>01E</u>	<u>7</u>
3. Miscellaneous Property in Section	S _____ T _____ R _____	_____
	S _____ T _____ R _____	_____

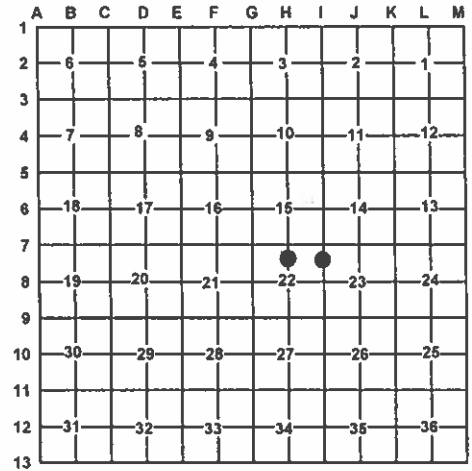
4. Lot No: _____ Recorded Plat: _____

5. Private Claims: _____

I, Carl T. Kiiskila, in a field survey on April 12, 2011 do hereby state that under requirements of PA 74, Michigan PA of 1970, the corner points mentioned in lines 1 and 2 above were in conformance with regulations and rules therefore as required in the current manual of survey instructions of the United States Department of the Interior, Bureau of Land Management or by a decree of a Court of Law and/or that the corner points mentioned in lines 3, 4 and 5 above were in conformance with the rules of the Michigan Board of Land Surveyors or by a Decree of a Court of Law; established, re-established, monumented, recovered, found as expressed below:

NOTE: Not more than 2 corners, all in the same town and range, may be recorded on this certificate.

Register of Deeds Stamp & File Number



A. Description of original monument and accessories and/or subsequent restoration:

5 - CN 1/16 Corner section 22, T35N, R01E

I - N 1/16 Corner comm. to section's 22 & 23, T35N, R01E

None

None

B. Description of corner evidence found and/or method applies in restoring or re-establishing corner:

5 - CN 1/16 Corner section 22, T35N, R01E

I - N 1/16 Corner comm. to section's 22 & 23, T35N, R01E

Set stamped 2" dia. aluminum cap on 5/8" x 34" rebar per standard BLM procedure. Corner falls S60°E 15' of fence corner running South & East. Found no other evidence to dispute the location for the corner.

Set stamped 2" dia. aluminum cap on 5/8" x 34" rebar per standard BLM procedure. Corner falls S67°E 18' of fence corner running South & West. Found no other evidence to dispute the location for the corner.

C. Description of monument for corner and accessories established to perpetuate locating the position of the corner:

5 - CN 1/16 Corner section 22, T35N, R01E

I - N 1/16 Corner comm. to section's 22 & 23, T35N, R01E

2" dia. stamped aluminum cap on 5/8" x 34" rebar

2" dia. stamped aluminum cap on 5/8" x 34" rebar

Wit: N33°E 24.15' to set N&T on NW side 14" R. Oak
S86°E 11.44' to set N&T on N side 7" W. Pine
S41°W 37.04' to set N&T on SE side 4" R. Maple
N85°W 19.71' to set N&T on N side 6" W. Pine
Set Blue Carsonite post w/ location tag 1' North

Wit: N36°E 14.69' to set N&T on NW side 4" W. Pine
S61°E 30.12' to set N&T on SW side 11" R. Pine
S50°W 39.38' to set N&T on NW side 12" R. Pine
N47°W 53.84' to set N&T on NE side 4" R. Pine
Set Blue Carsonite Post w/ location tag 1' North

Signed by:

Carl T. Kiiskila

Date:

5-1-12

Surveyor's Michigan License No.:

33981

