

# LAND CORNER RECORDATION CERTIFICATE

Filing Requirement of Act 74, Mich. PA 1970

| For Corners In:<br>Cheboygan<br>(County) | Located In | Corner Code # |
|--|------------|---------------|
| 1. Public Land Survey                    | T 35N R 1E | G-6           |
|  | T 35N R 1E | I-6           |
| 2. Property Controlling<br>in Section    | S T R      |               |
|  | S T R      |               |
| 3. Miscellaneous<br>Property in Section  | S T R      |               |
|  | S T R      |               |

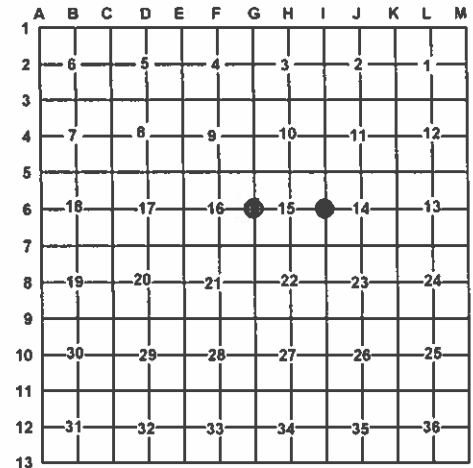
4. Lot No: \_\_\_\_\_ Recorded Plat: \_\_\_\_\_

5. Private Claims: \_\_\_\_\_

I, Carl T. Kiiskila, in a field survey on April 6, 2011 do hereby state that under requirements of PA 74, Michigan PA of 1970, the corner points mentioned in lines 1 and 2 above were in conformance with regulations and rules therefore as required in the current manual of survey instructions of the United States Department of the Interior, Bureau of Land Management or by a decree of a Court of Law and/or that the corner points mentioned in lines 3, 4 and 5 above were in conformance with the rules of the Michigan Board of Land Surveyors or by a Decree of a Court of Law; established, re-established, monumented, recovered, found as expressed below:

**NOTE: Not more than 2 corners, all in the same town and range, may be recorded on this certificate.**

Register of Deeds Stamp & File Number



## A. Description of original monument and accessories and/or subsequent restoration:

G-6 – ¼ Corner comm. to sec.'s 15 & 16, T35N, R01E

1840 – GLO – Brevort- Set qr. Section post.  
Sp. Pine 10 N78°E 69  
Sp. Pine 9 N66°W 53

I-6 – ¼ Corner comm. to sec.'s 14 & 15, T35N, R01E

1840 – GLO – Brevort- Set qr. Section post.  
Sp. Pine 6 S18°W 24  
Sp. Pine 10 N50°E 34  
1962 – Cheb. Co. Land Cor. Rec. – L.a, p.281 – Dean DeLamater, P.S.#5778 – Corner found (pipe) & witnessed by United Assoc. Inc., survey crew while making a survey in the area.  
S35°W 45.39' 6" J. Pine  
N60°W 39.55' 18" Oak  
S72°W 46.90' 6" R. Pine  
2000 – Road Easement Description – Brian K. Fullford, P.S.#41099 – Set ½" bar & cap at single proportion distance. N61°E 75.68' to 7" J. Pine; S81°E to 73.97' 14" J. Pine; S36°W 84.28' to 12" R. Pine; N52°W 97.08' to 14" R. Pine

## B. Description of corner evidence found and/or method applies in restoring or re-establishing corner:

G-6 – ¼ Corner comm. to sec.'s 15 & 16, T35N, R01E

Found and accepted 2" dia. pipe in trail road intersection as the best available evidence for the position of the original corner. Drove a 5/8"x34" rebar w/2" AC in center of found pipe. Found no other evidence to dispute the location for the corner.

I-6 – ¼ Corner comm. to sec.'s 14 & 15, T35N, R01

Found ½" CIR#41099 on W. gravel shoulder of N-S paved county road. Accepted found iron as a careful and faithful reestablishment of the position of the original corner. Drove standard DNR monument over found ½" CIR. Found no other evidence to dispute the location for the corner.

## C. Description of monument for corner and accessories established to perpetuate locating the position of the corner:

G-6 – ¼ Corner comm. to sec.'s 15 & 16, T35N, R01E

2" dia. stamped alum. cap on 5/8"x34" rebar in 2" dia. pipe.

Wit: N33°E 62.31' to set N&T on NW side 12" R. Pine  
S28°E 40.44' to set N&T on SW side 11" R. Pine  
S40°W 33.80' to set N&T on NW side 13" R. Pine  
N55°W 51.43' to set N&T on NE side 9" R. Pine

I-6 – ¼ Corner comm. to sec.'s 14 & 15, T35N, R01

4" dia. stamped aluminum cap on 1"x 36" galvanized pipe.

Wit: \*N57°E 75.67' to set N&T at old N&T on N side 11" J. Pine  
\*S84°E 74.93' to set N&T at old N&T on S side 16" J. Pine  
\*S34°W 84.47' to set N&T on NW side 14" R. Pine  
\*N54°W 97.00' to set N&T on SW side 16" R. Pine  
North 6' to centerline trail road West  
East 29' to centerline N-S paved road  
Found tags have P.S.#41099  
\* Witness of previous record.

Signed by:

Carl T. Kiiskila

Date:

5-1-12

Surveyor's Michigan License No.:

33981

