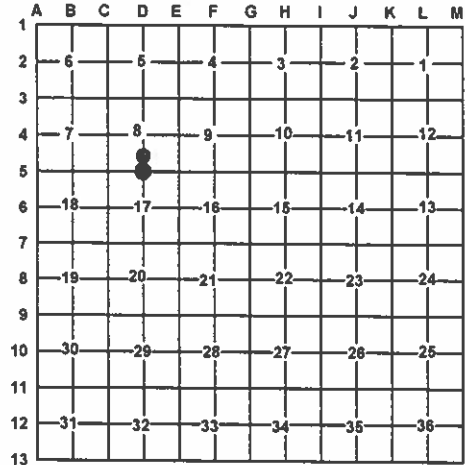


LAND CORNER RECORDATION CERTIFICATE
Filing Requirement of Act 74, Mich. PA 1970

For Corners In:
Cheboygan
(County)
Located In
Corner Code #
1. Public Land Survey T 36N R 1W D5
2. Property Controlling in Section S T R
3. Miscellaneous Property in Section S 8 T 36N R 1W 12
4. Lot No: Recorded Plat:
5. Private Claims:

I, Carl T. Kiiskila, in a field survey on September 1, 2009 do hereby state that under requirements of PA 74, Michigan PA of 1970, the corner points mentioned in lines 1 and 2 above were in conformance with regulations and rules therefore as required in the current manual of survey instructions of the United States Department of the Interior, Bureau of Land Management or by a decree of a Court of Law and/or that the corner points mentioned in lines 3, 4 and 5 above were in conformance with the rules of the Michigan Board of Land Surveyors or by a Decree of a Court of Law; established, re-established, monumented, recovered, found as expressed below:

NOTE: Not more than 2 corners, all in the same town and range, may be recorded on this certificate.



A. Description of original monument and accessories and/or subsequent restoration:

D5 - 1/4 Corner comm. to sec.'s 8&17, T36N,R1W

12 - CS 1/16 Corner Section 8, T36N, R1W

1855 - GLO - Harvey Mellen
Cedar 6" S22°W 4 Links
Hemlock 10" N21°E 10 Links

1957 - Survey Map, plan# X-16A-1 - MDOC - W.L.Paddison, P.S.#7256 - Set 1/2"x24" rod. Shows distances N&S.
1979 - Survey Map - MDOC - Kenneth J. Ostling, P.S.#10068 - Shows 1/2" bar in 6" dia. conc. cylinder with distances N-S.
1980 - Cert. of Survey - L.405,p.439 - Kenneth J. Ostling, P.S.#10068 - Fd. 1/2" iron bar in 6" conc. monument.

1903 - County Surveyor Record,p.196 - David Bowen, Cedar Post 3" square.
1957 - Survey Map, plan# X-16A-1 - MDOC - W.L.Paddison,P.S.#7256 Set 1" pipe with brass cap, data stamped. Shows distances N&W.
1979 - Survey Map - MDOC - Kenneth J. Ostling, P.S.#10068 - Shows found DOC mon. per Paddison and distance East.
2005 - Cert. of Survey - Brian K. Fullford, P.S.#41099 - Fd. MDNR cap. 10" Cedar S81°W 18.20'; 9" Fir S72°E 13.83'; 8" Fir S12°E 15.46'; 7" Cedar S35°E 31.99'

B. Description of corner evidence found and/or method applies in restoring or re-establishing corner:

D5 - 1/4 Corner comm. to sec.'s 8&17, T36N,R1W

12 - CS 1/16 Corner Section 8, T36N, R1W

Found 3 1/2" stamped brass disc on 1" galv. pipe up one foot in heavily wooded and lowland area per Paddison survey. Accepted found DOC mon. as the best available evidence for the position of the original corner. Found no other evidence to dispute the location for the corner.

Found 1/2" rebar in center of 6" dia. clay tile with concrete per Paddison survey. Found square cedar guard post to East and fence line running North from corner. Accepted found monument as the best available evidence for the position of the corner. Found no other evidence to dispute the location for the corner.

C. Description of monument for corner and accessories established to perpetuate locating the position of the corner:

D5 - 1/4 Corner comm. to sec.'s 8&17, T36N,R1W

12 - CS 1/16 Corner Section 8, T36N, R1W

3 1/2" stamped brass disc on 1" galvanized pipe.
Witnesses:
N26°E 19.98' to set N&T on E side 10" Cedar
S72°E 13.87' to set N&T at old N&T on N side 12" Fir
S15°E 15.35' to set N&T at old N&T on SW side 9" Fir
S79°W 18.29' to set N&T at old N&T on NW side 12" Cedar
Set Blue Carsonite Post 1' North

1/2" rebar in center of 6" dia. clay tile with concrete.
Witnesses:
N58°E 4.89' to set N&T on SE side 5" R.Maple
S44°E 16.63' to set N&T on S side 12" R.Maple
S60°W 5.58' to set N&T on N side 6" Ash
N48°W 13.13' to set N&T on SW side 4" B.Fir
Set Blue Carsonite Post w/location tag 1' North

* Previous Recorded witness.

Carl T Kiiskila

Surveyor's Michigan License No.: 33981

6-9-10

