

MICHIGAN
DEPARTMENT OF CONSERVATION
FORESTRY DIVISION

LAND CORNER RECORD

T. 37 N.R. 1 E

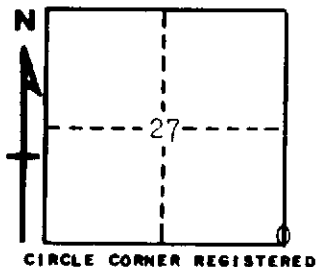
Cheboygan COUNTY

DESCRIPTION OF CORNER Section Corner common to Sections 26-27-34-35

CORNER MONUMENT Drove 1" iron bar

DATE MONUMENT PLACED AND WITNESSED 12/19/63

WITNESSES TO CORNER.....



7" Maple S 62 W 39.0

5" Maple N 38 W 60.5

AND

DESCRIPTION IN DETAIL AS TO HOW CORNER WAS LOCATED AND IDENTIFIED OR RESTORED.

This corner was set while making a survey in this area. Set corner by proportionate measurement between corners 1 mile North, 1 mile East, 2 miles West and $\frac{1}{2}$ mile South. This point falls in North-South track trail and all C.B. evidence gone. Can locate no previous corner.

SURVEYOR'S SEAL

SIGNED

Kenneth J. Ostling
REGISTERED LAND SURVEYOR #12,068

DATE

December 30, 1963