

MICHIGAN
DEPARTMENT OF CONSERVATION
FORESTRY DIVISION

LAND CORNER RECORD

T. 37 N.R. 24W

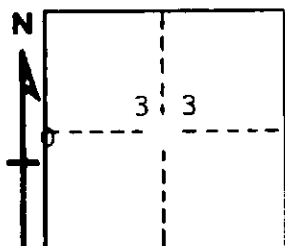
Delta COUNTY

DESCRIPTION OF CORNER 1/4 corner for sections 32/33

CORNER MONUMENT 1" iron pipe with 4" aluminum cap

DATE MONUMENT PLACED AND WITNESSED 9/11/68, F. J. Bray

WITNESSES TO CORNER..... 12" dead w. pine (1/4 S) (NBT) S 28° W, 04 links



9" dead cedar (1/4 S) (NBT) N 73° E, 09½ links

AND

CIRCLE CORNER REGISTERED

DESCRIPTION IN DETAIL AS TO HOW CORNER WAS LOCATED AND IDENTIFIED OR RESTORED.

This corner was replaced from two original tamarack B.T.'s in poor condition but overgrowth of scribe marks and notches visible.

SURVEYOR'S SEAL

SIGNED Frank J. Bray DATE 12/11/68
REGISTERED LAND SURVEYOR
Frank J. Bray