

MICHIGAN
DEPARTMENT OF CONSERVATION
FORESTRY DIVISION

LAND CORNER RECORD

T. 38 N. R. 19W

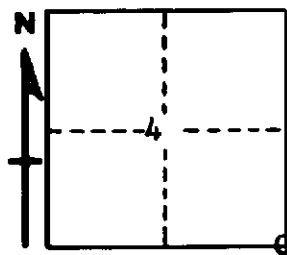
Delta COUNTY

DESCRIPTION OF CORNER Section corner for sections 3-4-9-10

CORNER MONUMENT 5/8" X 36" iron bar

DATE MONUMENT PLACED AND WITNESSED 9-15-61 with D. St. Ours

WITNESSES TO CORNER..... 5" Twin Cedar (NBT) S25°E 34.7'



10" Cedar (NBT) S48°W 29.6'

AND

CIRCLE CORNER REGISTERED

DESCRIPTION IN DETAIL AS TO HOW CORNER WAS LOCATED AND IDENTIFIED OR RESTORED.

This corner was replaced as recorded by Marcus McNabb, County surveyor, in 1916. Found W. Birch (NBT) N59°E 38.' Distance west to $\frac{1}{4}$ corner agrees with McNabb's recorded distance of 2646.0'.

SURVEYOR'S SEAL

SIGNED Billy D. Buckler DATE March 14, 1962
REGISTERED LAND SURVEYOR
Billy D. Buckler