

STATE OF MICHIGAN  
DEPARTMENT  
OF  
NATURAL RESOURCES  
  
LAND CORNER RECORD

✓

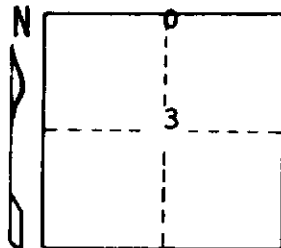
Alger  
Delta COUNTY  
T  $\frac{44}{43}$  N R 22W

DESCRIPTION OF CORNER  $\frac{3}{4}$  Corner  $\frac{34}{3}$  T44N R22W  
T43N R22W

CORNER MONUMENT 1" iron pipe with 4" aluminum cap

DATE MONUMENT PLACED AND WITNESSED August 9, 1972 F. J. Bray

WITNESSES TO CORNER..... 5" B. Spruce ( $\frac{1}{4}$ S) (NBT) S76°E, 22.0'



6" B. Spruce ( $\frac{1}{4}$ S) (NBT) 57° E, 31.7'

AND

CIRCLE CORNER REGISTERED

DESCRIPTION IN DETAIL AS TO HOW CORNER WAS LOCATED AND IDENTIFIED OR RESTORED.

This corner was set from one original witness tree stump in poor condition  
5" Tamarack N54° E, 45' Fits exactly to single proportionate measurement and  
on a line between section corners  $\frac{1}{2}$  mile east and  $\frac{1}{2}$  mile to the west.

SURVEYOR'S SEAL

DISTRIBUTION:

Forestry Division, Lansing

SIGNED

Frank J. Bray  
REGISTERED LAND SURVEYOR  
Frank J. Bray

DATE

11-15-72