

✓

STATE OF MICHIGAN  
DEPARTMENT  
OF  
NATURAL RESOURCES  
  
LAND CORNER RECORD

ALGER, DELTA COUNTY

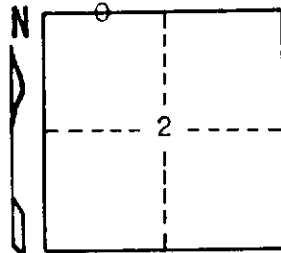
T 44 & 43 N R 22W

DESCRIPTION OF CORNER West 1/16 corner for Sections <sup>35</sup><sub>2</sub>

CORNER MONUMENT 1" iron pipe with 1" aluminum cap

DATE MONUMENT PLACED AND WITNESSED May 8, 1972

WITNESSES TO CORNER..... 5" W. Birch (W 1/16) (BT) N33°E 5.1'



1" R. Maple (W 1/16) (BT) S30°E 15.1'

AND

CIRCLE CORNER REGISTERED

DESCRIPTION IN DETAIL AS TO HOW CORNER WAS LOCATED AND IDENTIFIED OR RESTORED.

This corner was set midpoint and on line between the section corner to the west and the 1/4 corner to the east.

SURVEYOR'S SEAL

DISTRIBUTION:

SIGNED

Frank J. Bray  
REGISTERED LAND SURVEYOR  
Frank J. Bray

DATE

6-19-72

County Courthouse  
Area Forester (Regions I & II)  
District or Region Surveyor  
Forestry Div., Lansing

R 4047  
Rev. 10/68