

LAND CORNER RECORDATION CERTIFICATE
Filing Requirement of Act 74, Mich. PA 1970

For Corners In:
Emmet
(County)

Located In

Corner Code #

| | | | | | |
|--------------------------------------|---|-----|---|----|-----|
| 1. Public Land Survey | T | 36N | R | 4W | B-5 |
| | T | 36N | R | 4W | C-5 |
| 2. Property Controlling in Section | S | T | | R | |
| | S | T | | R | |
| 3. Miscellaneous Property in Section | S | T | | R | |
| | S | T | | R | |

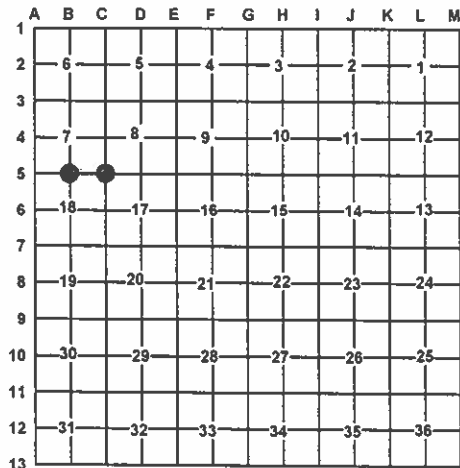
4. Lot No: Recorded Plat:

5. Private Claims:

I, Carl T. Kiiskila, in a field survey on June 25, 2008 do hereby state that under requirements of PA 74, Michigan PA of 1970, the corner points mentioned in lines 1 and 2 above were in conformance with regulations and rules therefore as required in the current manual of survey instructions of the United States Department of the Interior, Bureau of Land Management or by a decree of a Court of Law and/or that the corner points mentioned in lines 3, 4 and 5 above were in conformance with the rules of the Michigan Board of Land Surveyors or by a Decree of a Court of Law; established, re-established, monumented, recovered, found as expressed below:

NOTE: Not more than 2 corners, all in the same town and range, may be recorded on this certificate.

Register of Deeds Stamp & File Number



A. Description of original monument and accessories and/or subsequent restoration:

B-5 GLO-1840-John Mullett- Set ¼ Sec. Post.
Sugar 18" N23°E 14 links
Beech 15" S15°E 48 links

L.C.R.C-L.2,p.136-1985-Michael Trowbridge
P.S.#27463- Set ½" Bar from S.G. Main South line of section 7.

Wit: Fence line North East 35'
7" Maple S10°W 35.30'
8" Maple S45°E 53.40'
8" Maple N30°W 31.66'

C-5 GLO-1840-John Mullett- Set Post Corner sections 7,8,17,18
Beech 8 N78°E 18 links
Beech 11 N74°W 32 links

L.C.R.C-L.2,p.137-1985-Michael Trowbridge
P.S.#27463- Set ½" rod using occupation and also S.G. Main's work in section 7.

Wit: 10" Maple S88°E 34.35'
8" Maple N69°W 26.53'
4" Steel Post N49°W 34.66'
8" Basswood N39°E 40.90'

B. Description of corner evidence found and/or method applies in restoring or re-establishing corner:

B-5 Found ½" iron rod with PS Cap# 27643

C-5 Found ½" iron rod with PS Cap# 27643

C. Description of monument for corner and accessories established to perpetuate locating the position of the corner:

B-5 ½" iron rod with PS Cap# 27643

Wit: N29°W 31.30' to set N&T on SW side 14" Maple
N59°E 39.78' to set N&T on NW side 12" Triple Maple
S44°E 53.26' to set N&T on NE side 12" Maple
S12°W 35.18' to set N&T on E side 11" Maple
Set Blue Carsonite Post with loc. tag 20' North

C-5 ½" iron rod with PS Cap# 27643

Wit: N40°E 40.86' to set N&T on SE side 10" Basswood
S87°E 34.20' to set N&T on S side 15" Maple
S31°W 57.05' to set N&T on NW side 10" Maple
N88°W 20.92' to set N&T on N side 14" Maple
Set Blue Carsonite Post with loc. tag 10' West

Signed by:

Carl T. Kiiskila

Date:

7-20-09

Surveyor's Michigan License No.:

33981

