

SURVEY & REMONUMENTATION

OCT 03 1996

COMMISSION

LAND CORNER RECORDATION CERTIFICATE Filing Requirement of Act 74, Mich. P.A. 1970

Register's Office }
Gogebic County } ss.

For corners in Gogebic
(County)

Located In:

Corner Code #

1. Public Land Survey Sec. 4 T 43N R 39W
T _____ R _____
T _____ R _____
T _____ R _____
2. Property Controlling S _____ T _____ R _____
in Section S _____ T _____ R _____
3. Miscellaneous S _____ T _____ R _____
Property in Section S _____ T _____ R _____

G-H-1-2
Other
002

Received for record the
28TH day of MARCH
A. D. 19 96 at 11:20 o'clock
by A and recorded in
Liber 5 of CORNERS
on page 330
Ramona Collins, Deputy
Register of Deeds
Register of Deeds Stamp & File Number

4. Lot No. _____, Recorded Plat _____
5. Private Claims _____

Mile Post No. 46 1/2 + 1569.70 on MI/WI State Line.

I, John R. Garske, in a field survey on February 26, 19 96
do hereby certify that under requirements of P.A. 74, Michigan P.A. of 1970, the corner points mentioned
in lines 1 and 2 above were in conformance with regulations and rules therefore as required in the current
manual of survey instructions of the United States Department of the Interior, Bureau of Land
Management or by a decree of a Court of Law and/or that the corner points mentioned in lines 3, 4 and
5 above were in conformance with the rules of the Michigan Board of Professional Surveyors or by a
Decree of a Court of Law; established, re-established, monumented, re-monumented, recovered, found
as expressed below:

**NOTE: Not more than 4 corners, all in the same town and range, may be recorded
on this certificate.**

	A	B	C	D	E	F	G	H	I	J	K	L	M
2	6		5		4		3		2		1		
3													
4	7		8		9		10		11		12		
5													
6	18		17		16		15		14		13		
7													
8	19		20		21		22		23		24		
9													
10	30		29		28		27		26		25		
11													
12	31		32		33		34		35		36		

A. Description of original monument and accessories and/or subsequent restoration:

Mile Post #46 1/2 + 1569.70 feet on MI/WI state line.

- 1947 - William Burt, D.S., set a tamarack post from which a: Y. pine - S60°E - 166 links and a Y. pine 7" - S85°E - 181 links.
- 1928 - Harrington, surveying the MI/WI state line found a wooden stake at the corner and both original bearing trees. He set a 6" square at the top x 30" long x 8" square at bottom concrete monument. He established new bearing trees: R. pine 12" - S19°-40'E - 20.8 feet and a W. pine 14" - N76°E - 39.60 feet.

B. Description of corner evidence found and/or method applied in restoring or reestablishing corner:

I found the concrete monument Harrington set in 1928 stamped: Mile Corner 46 1/2 + 1569.7 feet, Michigan 1847 state line, 1928, Wisconsin, Joint Boundary Commission. I found one existing B.T. being S20°E - 20.8 feet. The corner was buried under 6"± of dirt.

(Research on File)

(SEE SKETCH ON BACK)

PEER GROUP APPROVED
Richard L. Wrahn 3/27/96
COUNTY REPRESENTATIVE

C. Description of monument for corner and accessories established to perpetuate locating the position of the corner:

Accepted above monument and established new bearing trees/objects:

- 5" Spruce - S26°E - 14.00 feet
- 6" J. pine - S49°W - 20.30 feet
- 9" R. pine - N56°E - 37.09 feet
- 6' steel sign rail - N15°W - 1.10 feet



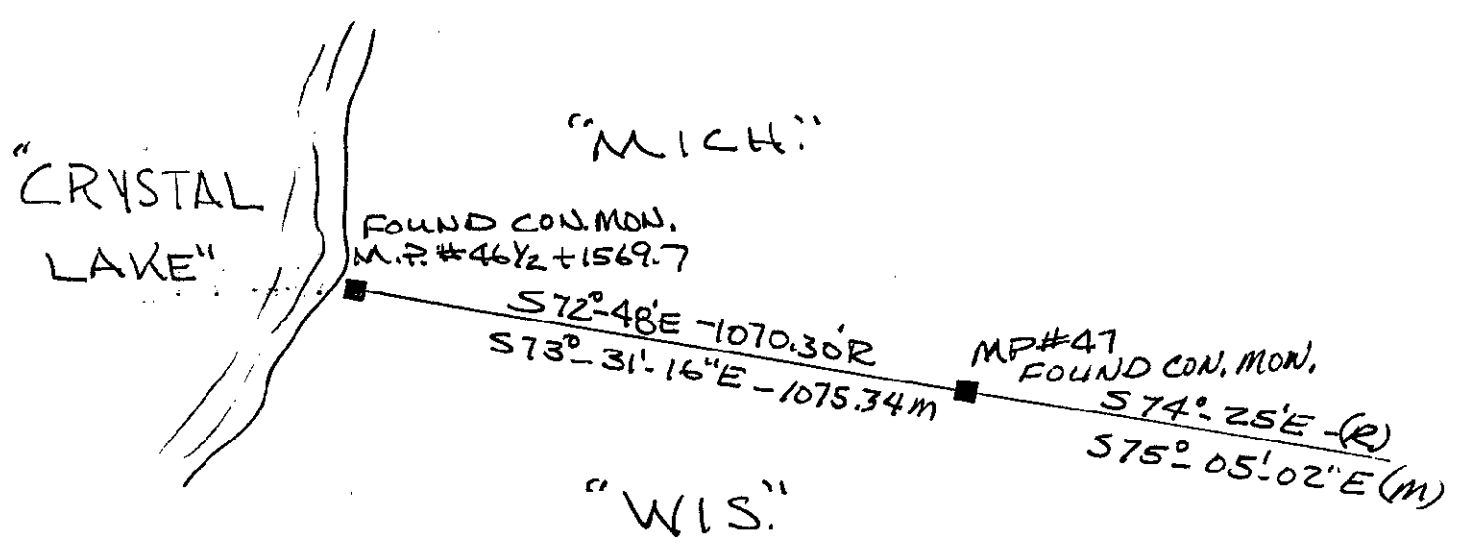
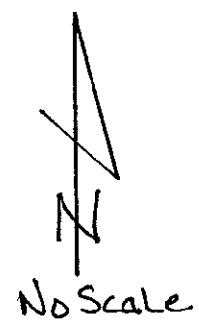
Signed by John R. Garske

Date 3-11-96

Surveyor's Michigan License No. 28410

FORM APPROVED BY MICHIGAN STATE BOARD OF PROFESSIONAL SURVEYORS, JAN. 28, 1971
REVISED MAY 14, 1975
REVISED JAN., 1983

SKETCH



SURVEY &
REMONUMENTATION

OCT 03 1996

COMMISSION