

SURVEY &  
REMONUMENTATION

OCT 0 8 1996

COMMISSION LAND CORNER RECORDATION CERTIFICATE  
Filing Requirement of Act 74, Mich. P.A. 1970

Register's Office }  
Gogebic County } ss.

For corners in Gogebic  
(County)

Located In:

Corner Code #

1. Public Land Survey Sec. 3 T 43N R 39W  
T R  
T R  
T R  
T R
2. Property Controlling S T R  
in Section S T R
3. Miscellaneous S T R  
Property in Section S T R

G-H-1-2  
Other  
# 003

Received for record the  
28<sup>th</sup> day of MARCH  
A. D. 1996 at 11:20 o'clock  
A. m., and recorded in  
Liber 5 of CORNERS

on page 329  
Ramona Collins, Deputy  
Register of Deeds

Register of Deeds Stamp & File Number

4. Lot No. , Recorded Plat  
5. Private Claims

Mile Post No. 47 on MI/WI State Line.

John R. Garske February 26, 1996

I, in a field survey on , 1996, do hereby certify that under requirements of P.A. 74, Michigan P.A. of 1970, the corner points mentioned in lines 1 and 2 above were in conformance with regulations and rules therefore as required in the current manual of survey instructions of the United States Department of the Interior, Bureau of Land Management or by a decree of a Court of Law and/or that the corner points mentioned in lines 3, 4 and 5 above were in conformance with the rules of the Michigan Board of Professional Surveyors or by a Decree of a Court of Law; established, re-established, monumented, re-monumented, recovered, found as expressed below:

NOTE: Not more than 4 corners, all in the same town and range, may be recorded on this certificate.

	A	B	C	D	E	F	G	H	I	J	K	L	M
2	6		5		4		3		2		1		
3													
4	7		8		9		10		11		12		
5													
6	18		17		16		15		14		13		
7													
8	19		20		21		22		23		24		
9													
10	30		29		28		27		26		25		
11													
12	31		32		33		34		35		36		
13													

A. Description of original monument and accessories and/or subsequent restoration:

- 1947 - Mile Post #47 on MI/WI state line. Original survey by William Burt, D.S., he set a wooden stake from which a Y. pine 18" - S86°E - 23 links and a Y. pine 12" - S50°E - 37 links.
- 1928 - Harrington, surveying the MI/WI state line recovered Burt's corner stake and original bearing trees. He established one bearing tree: J. pine 5" - N75°-30'W - 21.8 feet and replaced the stake with a 6" square at the top x 30" long and 8" square on bottom concrete monument.

B. Description of corner evidence found and/or method applied in restoring or reestablishing corner:

I found the concrete monument Harrington set in 1928 with a 3" x 4" brass cap stamped "Mile Corner 47", Michigan 1847 state line, 1928, Wisconsin, Joint Boundary Commission.

(Research on File)

(SEE SKETCH ON BACK)

PEER GROUP APPROVED  
Richard L. Drach 3/27/96  
COUNTY REPRESENTATIVE

C. Description of monument for corner and accessories established to perpetuate locating the position of the corner:

Accepted above concrete monument from which:

- 4" W. pine - N88°E - 17.95 feet (existing)
- 9" W. pine - N59°W - 25.48 feet
- 9" W. pine - South - 14.33 feet
- Steel sign rail - N15°E - 0.70 feet



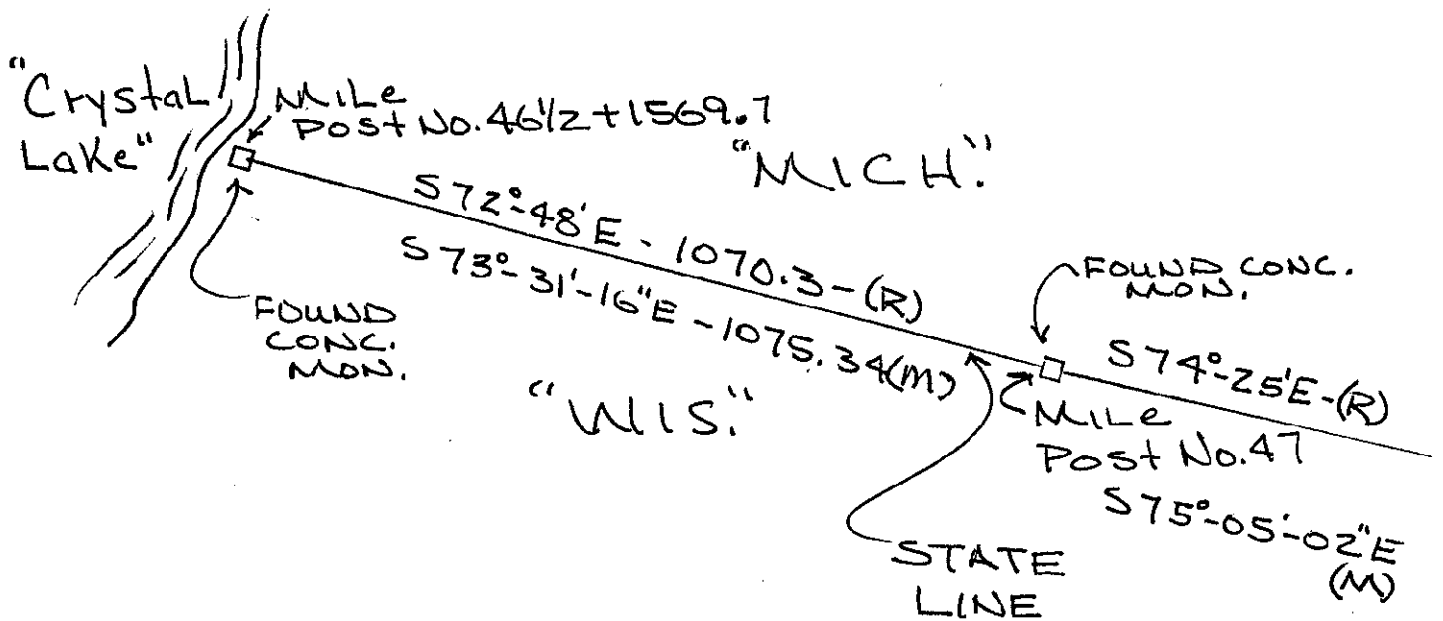
Signed by John R. Garske

Date 3-7-96

Surveyor's Michigan License No. 28410

FORM APPROVED BY MICHIGAN STATE BOARD OF PROFESSIONAL SURVEYORS, JAN. 28, 1971  
REVISED MAY 14, 1975  
REVISED JAN., 1983

SKETCH



SURVEY &  
REMONUMENTATION

OCT 03 1996

COMMISSION