

# SURVEY & REMONUMENTATION

SEP 08 1998

## LAND CORNER RECORDATION CERTIFICATE Filing Requirement of Act 74, Mich. P.A. 1970

For corners in **SECTION**

<u>Gogebic</u> (County)	Located In:	Corner Code #
1. Public Land Survey	Section 32 T45N R43W	CD-11
	T R	
	T R	005
	T R	
2. Property Controlling in Section	S T R	
	S T R	
3. Miscellaneous Property in Sec.	S T R	
	S T R	

Register's Office }  
Gogebic County } ss.

Received for record the  
MAY day of 1998  
A. D. 1998 at 2:00 o'clock  
P m., and recorded in  
Liber 6 of CORNERS  
on page 328  
Ramona Collins, Deputy  
Register of Deeds

Register of Deeds Stamp & File Number

4. Lot No. \_\_\_\_\_, Recorded Plat \_\_\_\_\_  
5. Private Claims \_\_\_\_\_

East M.C. on Bay of East shore of Stateline Lake  
between Sections 29 & 32, T45N, R43W

I, John R. Garske, in a field survey on April 12, 1998, do hereby state that under requirements of P.A. 74, Michigan P.A. of 1970, the corner points mentioned in lines 1 and 2 above were in conformance with regulations and rules therefore as required in the current manual of survey instructions of the United States Department of the Interior, Bureau of Land Management or by a decree of a Court of Law and /or that the corner points mentioned in lines 3, 4 and 5 above were in conformance with the rules of the Michigan Board of Land Surveyors or by a Decree of a Court of Law; established, re-established, monumented, recovered, found as expressed below:

NOTE: Not more than 2 corners, all in the same town and range, may be recorded on this certificate.

	A	B	C	D	E	F	G	H	I	J	K	L	M
1													
2	6		5		4		3		2		1		
3													
4	7		8		9		10		11		12		
5													
6	18		17		16		15		14		13		
7													
8	19		20		21		22		23		24		
9													
10	30		29		28		27		26		25		
11													
12	31		32		33		34		35		36		
13													

A. Description of original monument and accessories and/or subsequent restoration:  
49.17 CNS.

Original survey by Algernon Merryweather, D.S. in 1852.  
Original bearing trees: Cedar 6"- S85°W- 68 links  
Cedar 8"- N55°W- 67 links

B. Description of corner evidence found and/or method applied in restoring or reestablishing corner:

The original meander corner was set on the east shore of a bay on Stateline Lake. The mainland in this area is now connected to an island by artificial fill for a road. I established the Meander Corner at a proportional distance on the section line between the N.W. corner of Section 29 and the West M.C. on the island (now a peninsula) which I found. I set a S.M.C. to the Original M.C. which now falls in a wet area.

(Research on file)

**PEER GROUP APPROVED**  
Richard D. Dean 5/13/98  
COUNTY REPRESENTATIVE

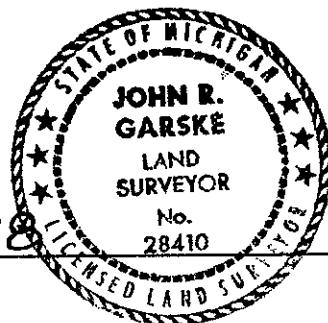
C. Description of monument for corner and accessories established to perpetuate locating the position of the corner:

I set a 3 1/4" Brass cap on a 5/8" diam. x 36" long iron rod at the toe of a slope and stamped it S.M.C from which I established:

10" Ash	S34°W	46.87 feet
12" Maple	S74°W	19.79 feet
8" Cedar	N87°E	34.53 feet
6" Maple	N12°W	19.30 feet

Signed by John R. Garske  
Surveyor's Michigan License No. 28410

Date 5/12/98

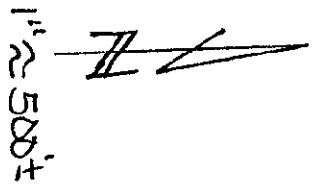


SURVEY &  
REMONUMENTATION

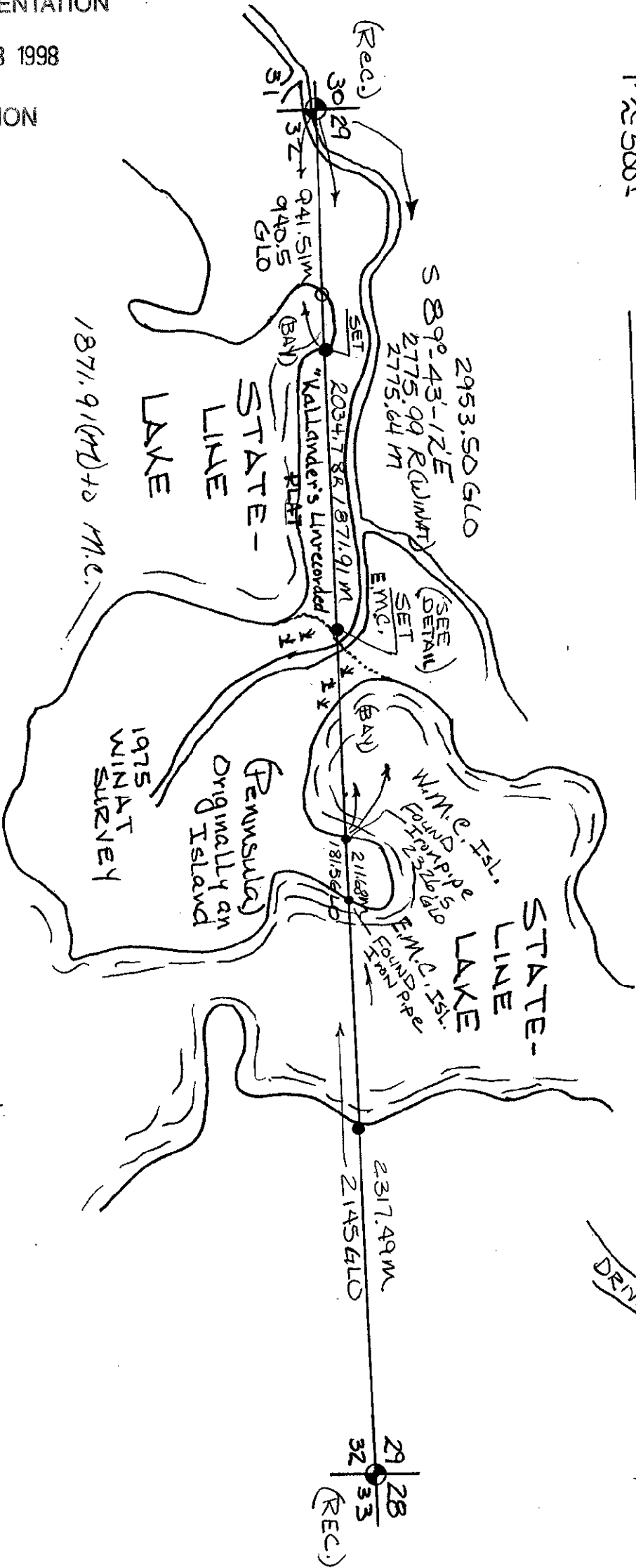
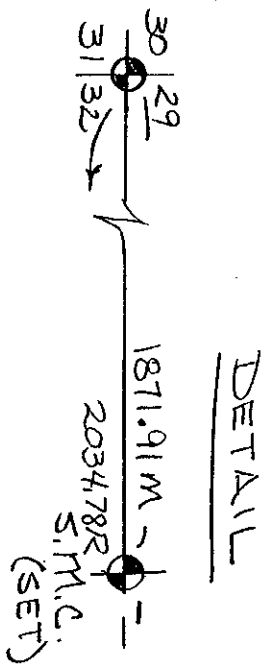
SEP 08 1998

SECTION

005



SKETCH  
SECTION LINE  
COMMON TO 29432  
T45N, R243W  
6 ORIGINAL M.C.'S



TOTAL - 8064 - GLO (5280')  
5305.16 M (WINAT)